

## 1.5mm-travel Vertical Type SPEF Series

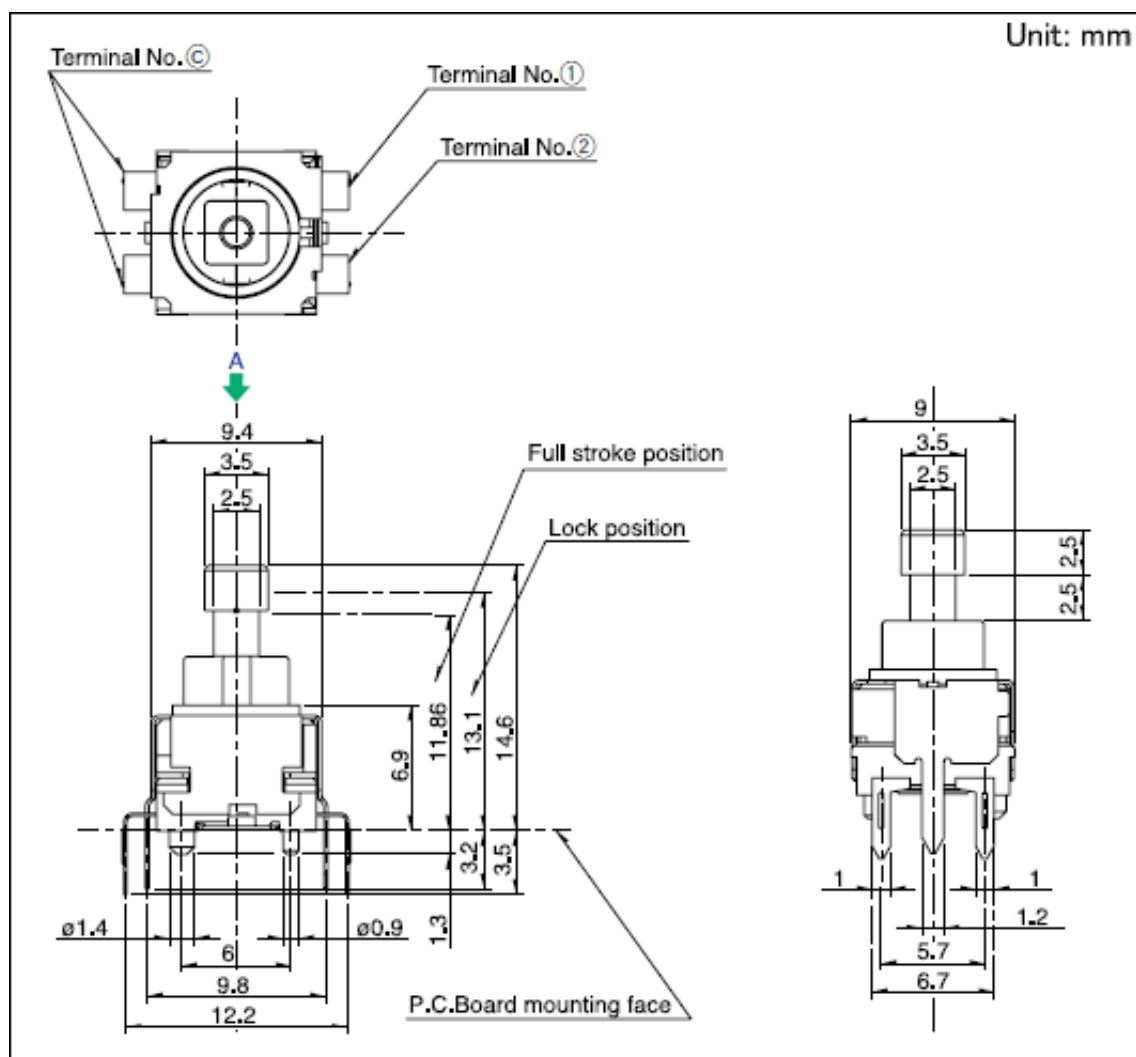
Part number		<b>SPEF110200</b>
Changeover timing		Non shorting
Travel		1.5mm
Total travel		2.7mm
Operating force		5N
Mounting method		PC board
Poles-Positions		1-pole, 2-positions
Operation		Latching
Terminal type		Dip
Operating temperature range		-40°C to +85°C
Rating (max.)/(min.) (Resistive load)		1A 14.5V DC/50μA 3V DC
Electrical performance	Contact resistance (Initial performance/After lifetime)	100mΩ max./100mΩ max.
	Insulation resistance	3MΩ min. 100V DC
	Voltage proof	100V AC for 1 minute
Mechanical performance	Actuator strength	90N
	Pulling direction	30N
Durability	Operating life with load (at max. rated load)	30,000 cycles 100mΩ max.
Environmental performance	Cold	-40±2°C for 96h
	Dry heat	85±2°C for 96h

Damp heat

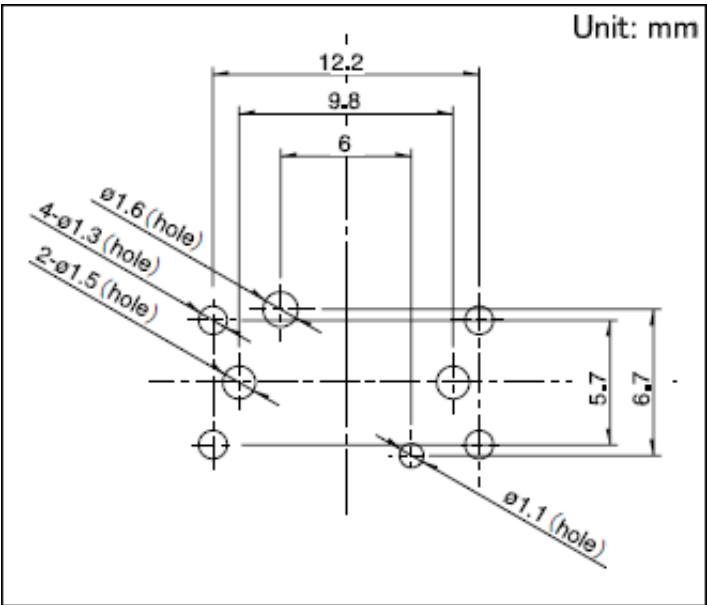
40±2℃, 90 to 95%RH for 96h

Minimum order unit (pcs.)	Japan	1,050
	Export	4,200

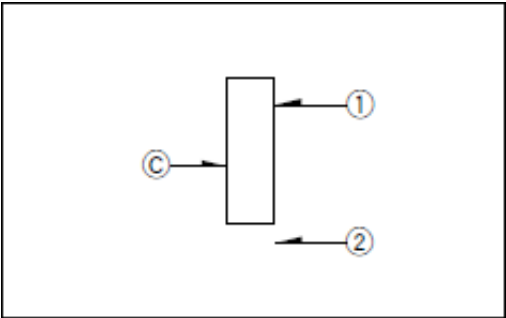
## Dimensions



## Mounting Hole Dimensions



Circuit Diagram



Viewed from direction A in the dimensions.

Packing Specifications

Bulk

Number of packages (pcs.)	1 case / Japan	1,050
	1 case / export packing	4,200
Export package measurements (mm)	540×360×230	

Soldering Conditions

Reference for Dip Soldering

Items	Preheating temperature	-
	Preheating time	-
Dip soldering	Soldering temperature	260±5℃

Duration of immersion	10±1s
-----------------------	-------

---

**Reference for Hand Soldering**

---

Soldering temperature	350±10℃
-----------------------	---------

---

Soldering time	3s max.
----------------	---------

---

Notes are common to this series/models.

1. This site catalog shows only outline specifications. When using the products, please obtain formal specifications for supply.
2. Please place purchase orders per minimum order unit (integer).
3. This products can be used in vehicles.  
Although these products are designed to perform over a wide operating temperature range, please ensure that you receive and read the formal delivery specifications before use.