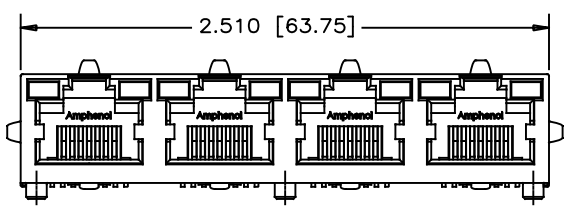
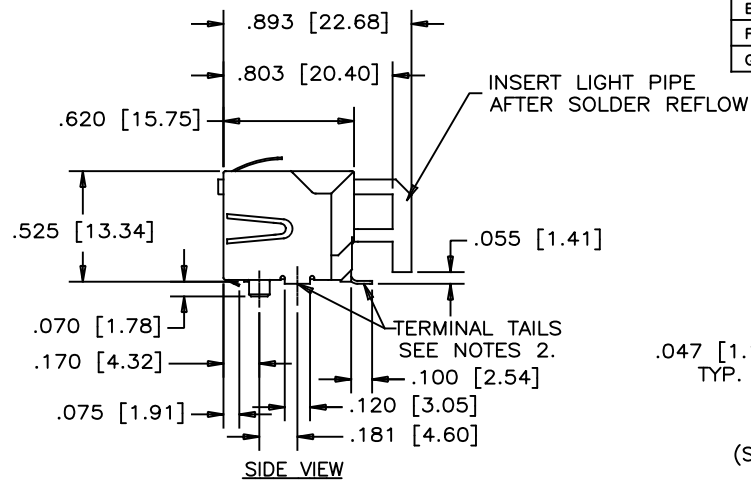


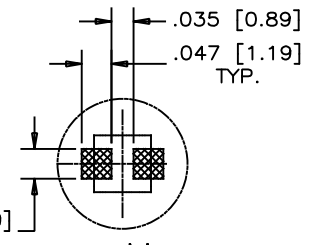
REVISIONS			
REV	DESCRIPTION, ECN, EAR NO.	DATE	APP'D
E	PROPOSAL	JUL18/12	L.CHAN
F	ADD CO-PLANARITY SPEC AND CORRECT SHIELD TABS	FEB13/17	L.CHAN
G	ADD PACKAGING INFORMATION PER EAR# RJ22025	MAY17/22	KELVIN



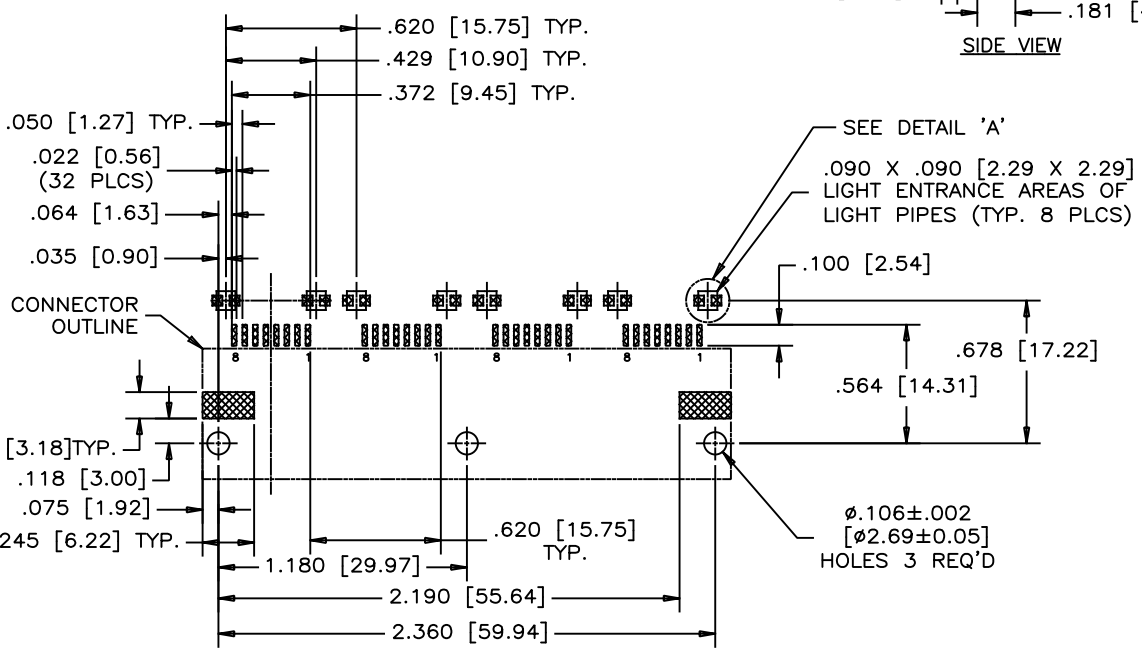
FRONT VIEW



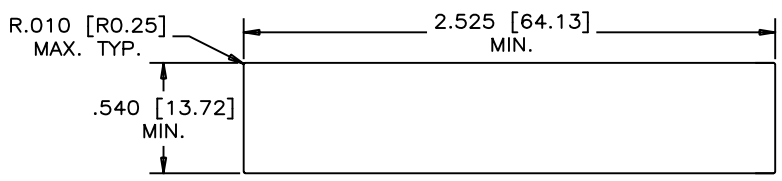
SIDE VIEW



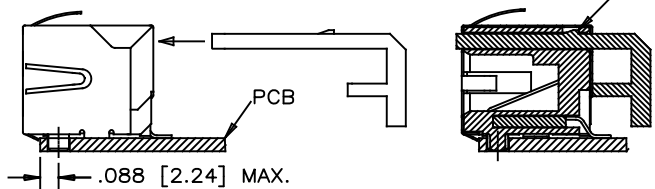
DETAIL 'A'
(ENLARGED)
SMT LED SOLDER PAD
(SMT LED TO BE PROVIDED BY THE CUSTOMER)
LATCH TO THE HOUSING OPENING



RECOMMENDED P.C.B. LAYOUT
(TOLERANCE: ±.002[±0.05])
(COMPONENT SIDE OF BOARD)



RECOMMENDED PANEL CUTOUT



AFTER SOLDER REFLOW, LOAD LIGHT PIPE THROUGH THE CONNECTOR REAR ACCESS IN THE DIRECTION AS SHOWN

NOTES:

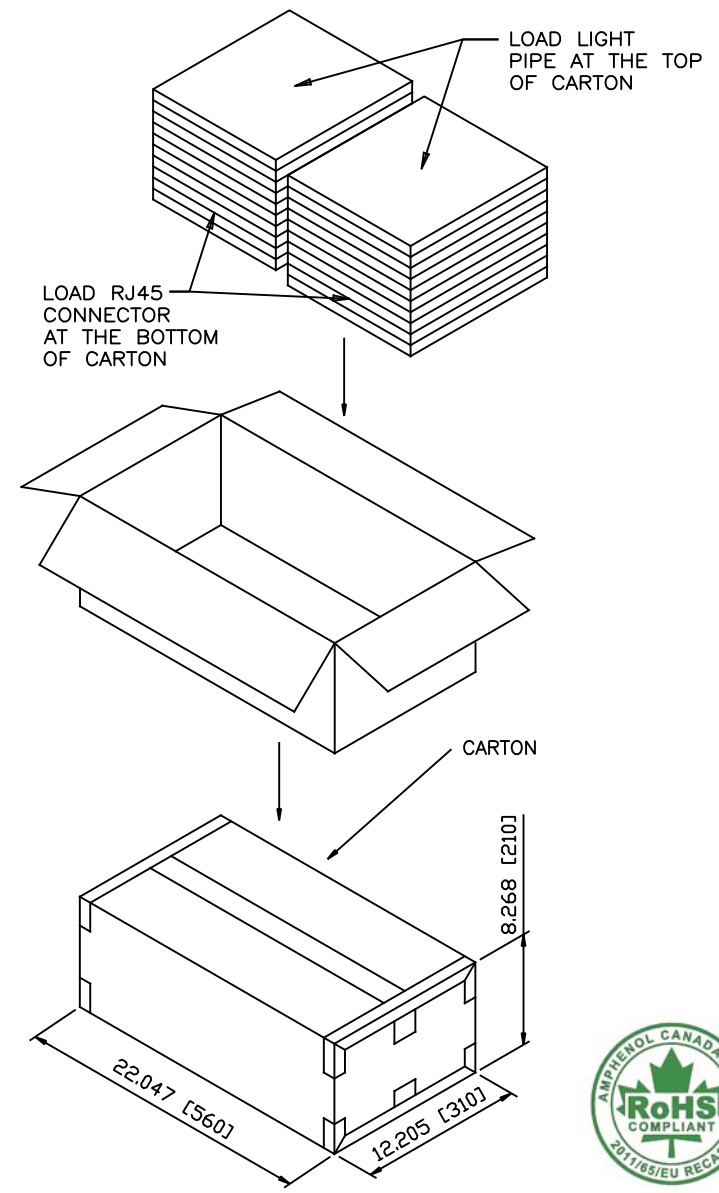
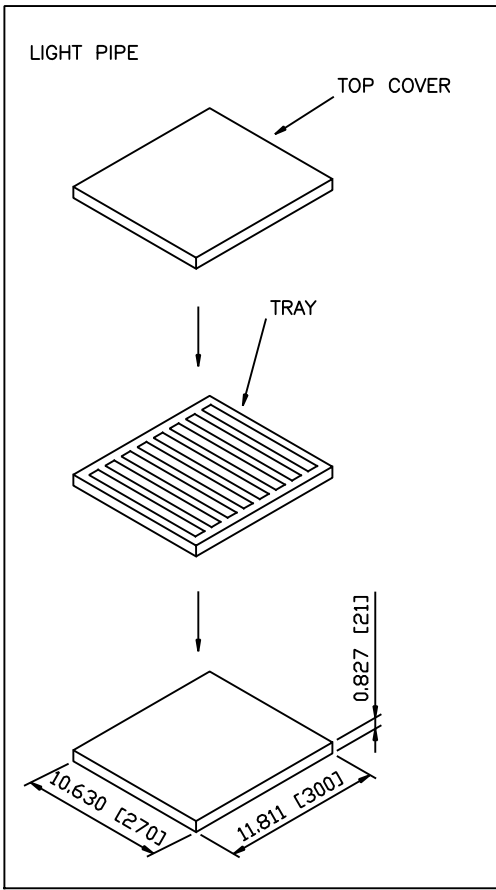
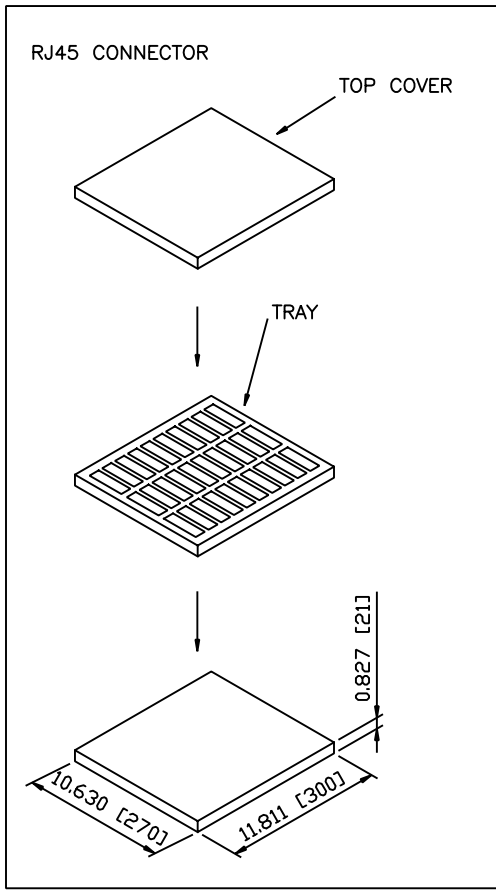
- MATERIALS:
 PLASTIC HOUSING: HIGH TEMPERATURE THERMOPLASTIC
 FLAMMABILITY RATING UL 94V-0
 CONTACTS: PHOSPHOR BRONZE
 PLATING: 20 μ" [0.51 MICRONS]
 MIN. GOLD ON MATING SURFACES.
 50 μ" [1.27 MICRONS]
 MIN. NICKEL UNDERPLATE.
 100 μ" [2.54 MICRONS]
 MIN. MATTE TIN ON CONTACT TAILS.
 SHIELD: COPPER ALLOY
 PLATING: NICKEL
 LIGHT PIPE: CLEAR POLYCARBONATE
 FLAMMABILITY RATING UL 94V-0
- COPLANARITY SPECIFICATION:
 WITH THE MODULAR JACK SITTING ON A LEVEL SURFACE,
 THE MAXIMUM GAP BETWEEN THE LEVEL SURFACE OF SHIELD TAB
 AND ALL TERMINAL TAILS IS .004 [0.10].

AMPHENOL PART NUMBER: RJSSE-5381-04



UNLESS SPECIFIED OTHERWISE	DRAWN Chigow Xu	DEC25/06	Amphenol Canada Corp. Commercial Products
PRIMARY UNITS INCHES	CHECKED L.CHAN	DEC25/06	
SECONDARY MILLIMETERS	M.E. APP'D		4 PORT SURFACE MOUNT JACK 8 POSITION, 8 CONTACTS, SHIELD, WITH LIGHT PIPES - RoHS COMPLIANT
REFERENCE IN PARENTHESES	Q.A. APP'D		
GENERAL TOLERANCES	DWG APP'D		DWG NO. P-RJSSE-5381-04
1 DECIMAL PLACE ±0.025	ENG. REL. NO.		
2 DECIMAL PLACES ±0.020	REF. EAR:# RJ12078		
3 DECIMAL PLACES ±0.015	THIRD ANGLE PROJECTION	DO NOT SCALE DRAWING	REV G
ANGULAR DEGREES ±1.0°			CODE ID NO. 03554 DWG SIZE X SCALE N/A SHEET 1 OF 2

REVISIONS			
REV	DESCRIPTION, ECN, EAR NO.	DATE	APP'D
E	PROPOSAL	JUL18/12	L.CHAN
F	ADD CO-PLANARITY SPEC AND CORRECT SHIELD TABS	FEB13/17	L.CHAN
G	ADD PACKAGING INFORMATION PER EAR# RJ22025	MAY17/22	KELVIN



PACKAGING NOTES:

1. EACH TRAY PACK 30PCS CONNECTORS, EACH CARTON PACK 270PCS CONNECTORS.
2. EACH LIGHT PIPE TRAY PACK 112PCS LIGHT PIPES, EACH CARTON PACK 1080PCS LIGHT PIPES, [ONE TRAY IS NOT FULLY LOADING]

THIS DOCUMENT CONTAINS PROPRIETARY INFORMATION AND SUCH INFORMATION MAY NOT BE DISCLOSED TO OTHERS FOR ANY PURPOSE OR USED FOR MANUFACTURING PURPOSES WITHOUT WRITTEN PERMISSION FROM AMPHENOL CANADA CORP.

UNLESS SPECIFIED OTHERWISE	DRAWN Chigow Xu	DEC25/06
PRIMARY UNITS INCHES	CHECKED L.CHAN	DEC25/06
SECONDARY MILLIMETERS	M.E. APP'D	
REFERENCE IN PARENTHESES	Q.A. APP'D	
GENERAL TOLERANCES	DWG APP'D	
1 DECIMAL PLACE ±0.025	ENG. REL. NO.	
2 DECIMAL PLACES ±0.020	REF. EAR:# RJ12078	
3 DECIMAL PLACES ±0.015	THIRD ANGLE PROJECTION	DO NOT SCALE DRAWING
ANGULAR DEGREES ±1.0°		

Amphenol Canada Corp. Commercial Products		
4 PORT SURFACE MOUNT JACK 8 POSITION, 8 CONTACTS, SHIELD, WITH LIGHT PIPES - RoHS COMPLIANT		
DWG NO.	P-RJSSE-5381-04	REV G
CODE ID NO. 03554	DWG SIZE X	SCALE N/A
SHEET 2 OF 2		