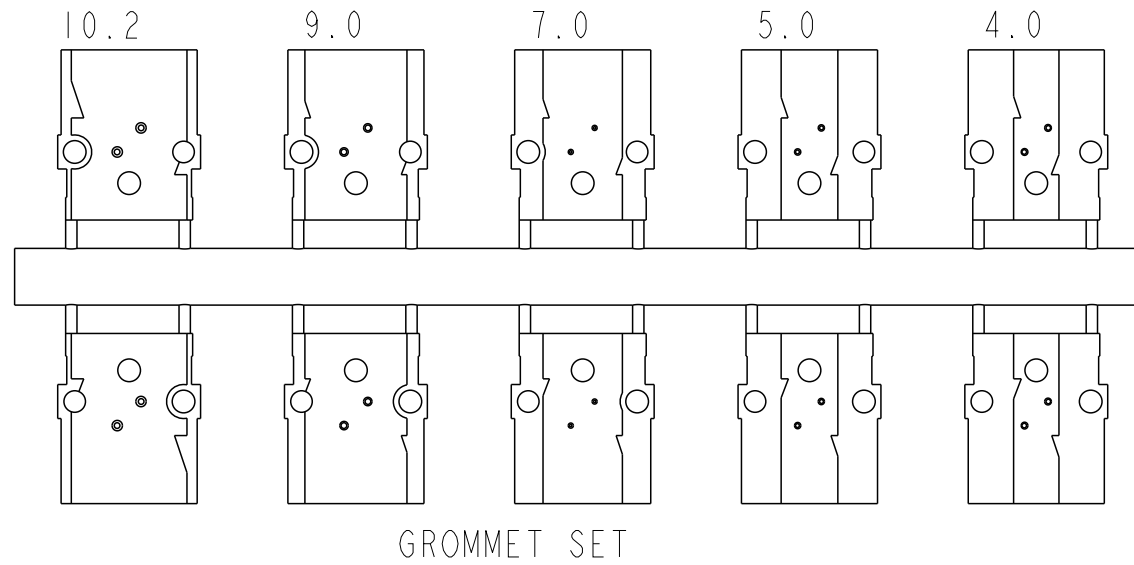
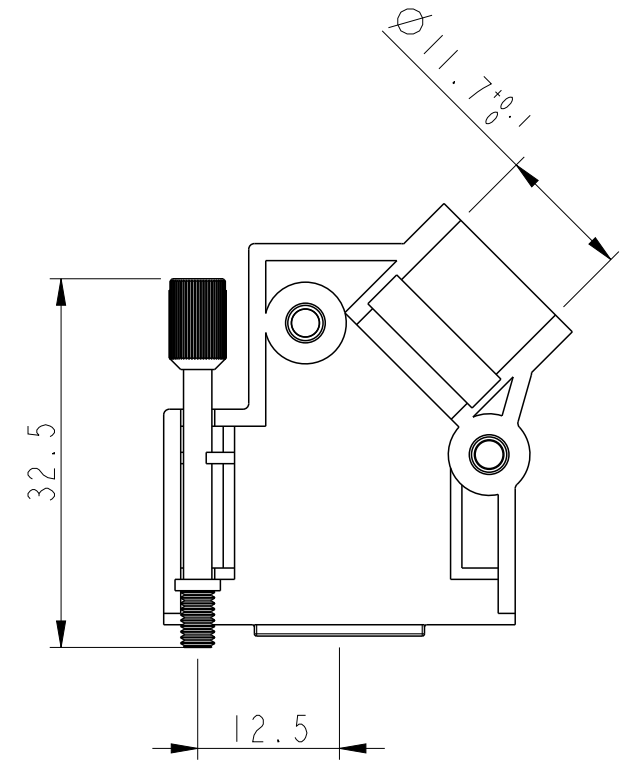
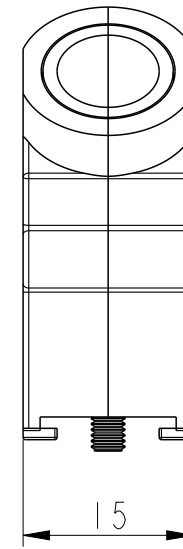
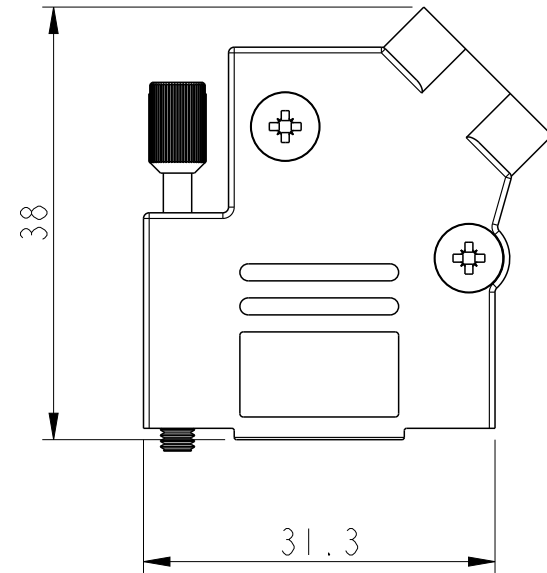
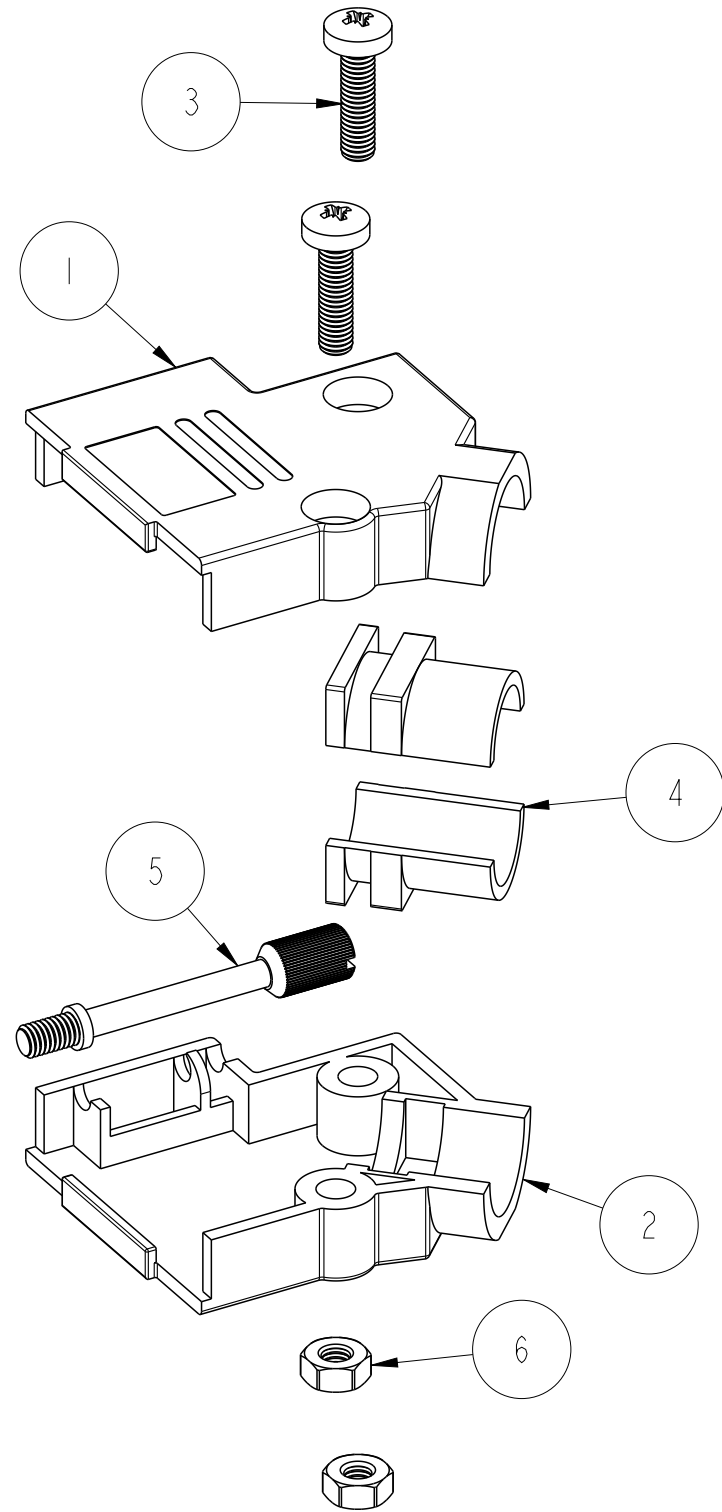


PART NUMBER	PACK	HOOD SIZE
8655AZES2A11KLF	KIT	09



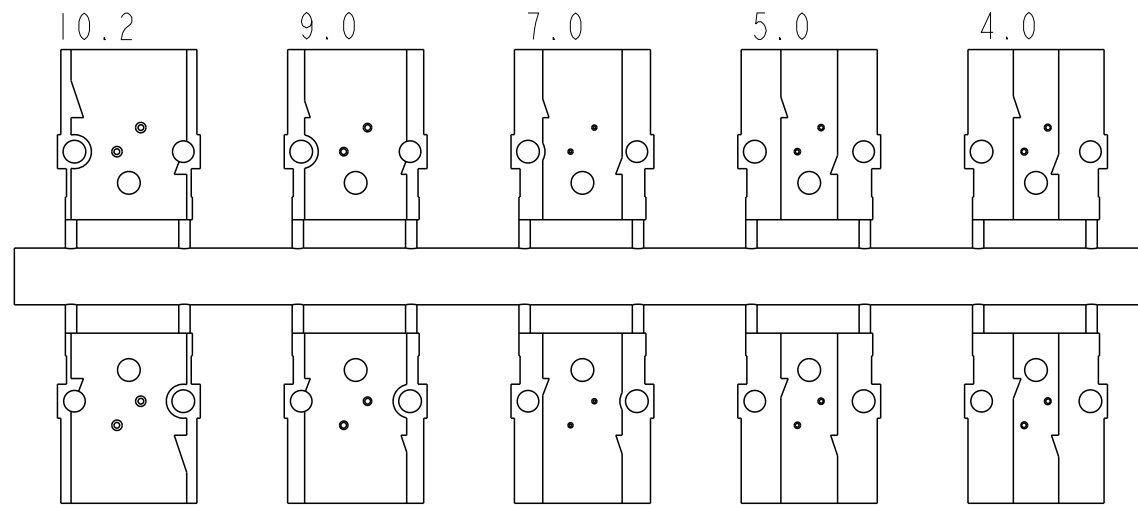
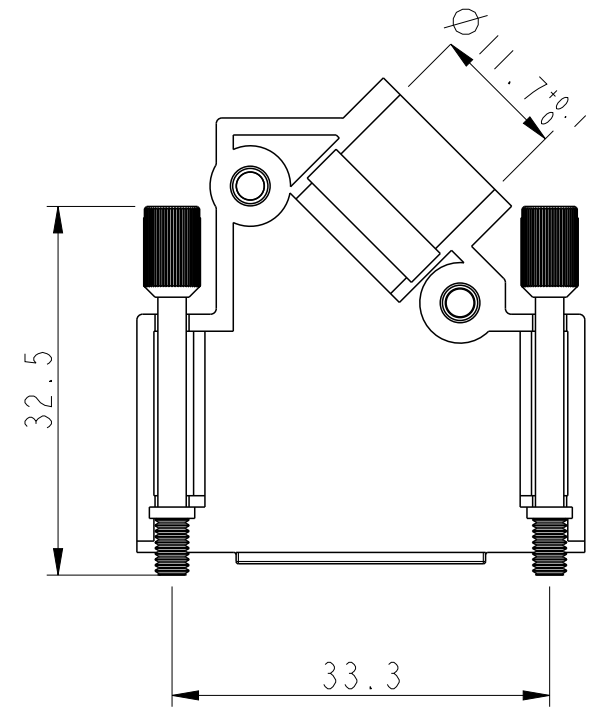
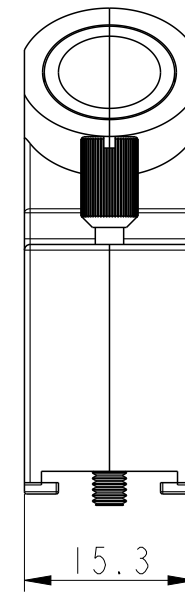
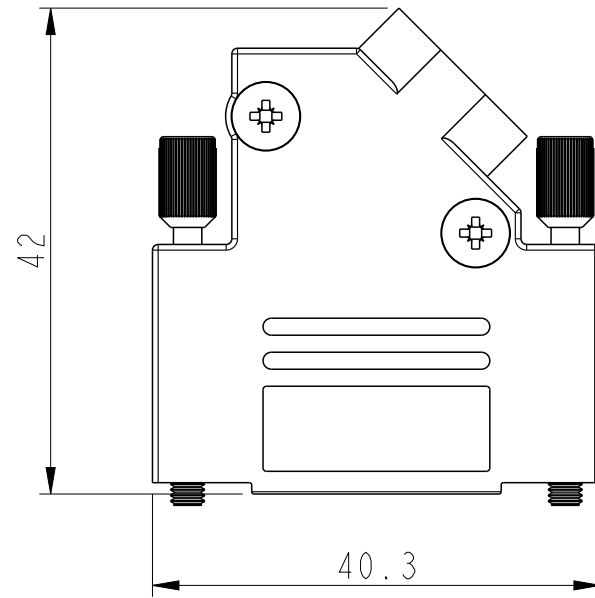
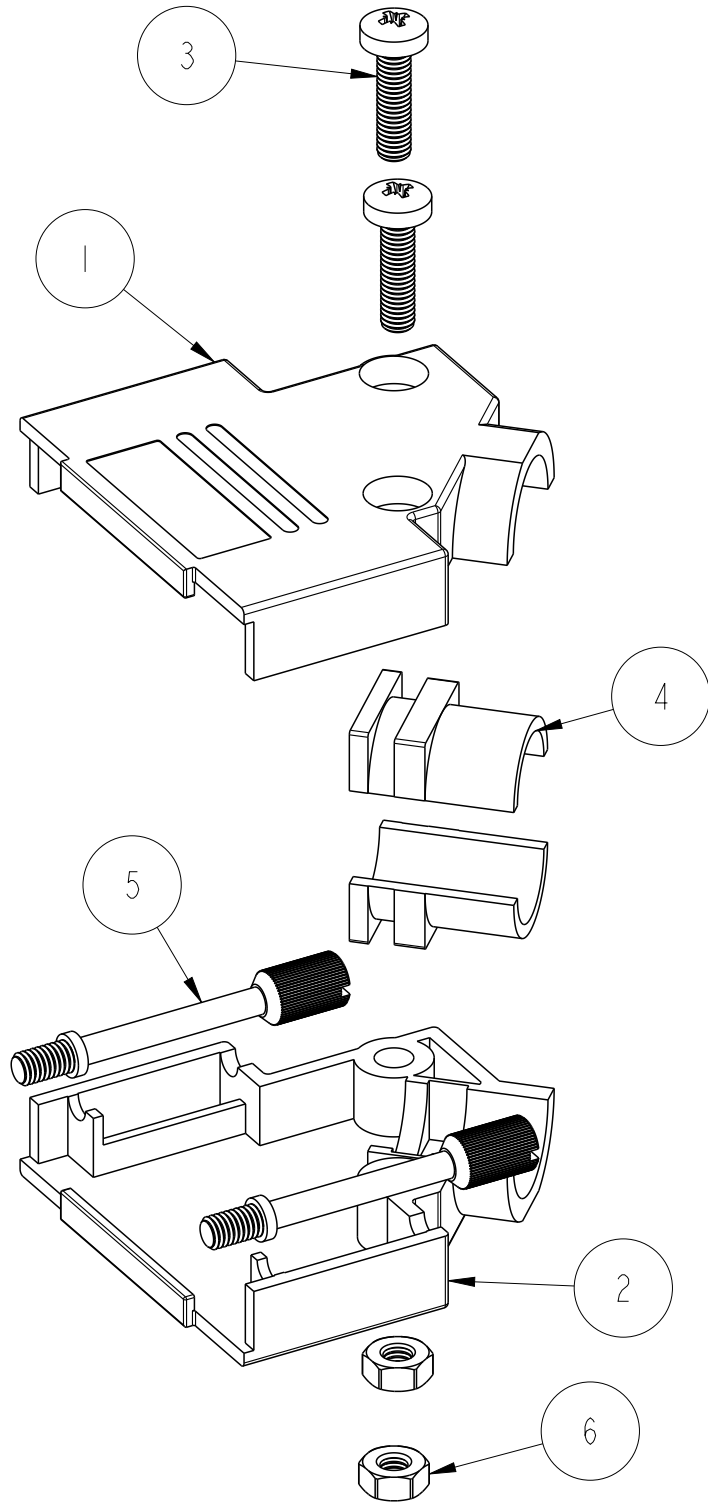
NOTES: (FOR EVERY SIZES)
1- OPERATING TEMPERATURE: -40°C TO +120°C
2- INDIVIDUAL KITS SEALED IN PLASTIC COVER
IN UNASSEMBLED FORM.
BOM AS SHOWN IN TABLE

RoHS INFORMATION:
- THE LF PRODUCT MEETS EUROPEAN UNION
DIRECTIVES AND OTHER COUNTRY REGULATIONS
AS DESCRIBED IN GS+22-009
- THE PRODUCT IS NOT INTENDED TO BE EXPOSED
TO A MANUFACTURING SOLDER PROCESS

ITEM NO.	QTY.	PART DESCRIPTION
1	1	D45PK09-UPPER COVER
2	1	D45PK09-LOWER COVER
3	2	M3X11.5 SCREW
4	1	D45ZK-D2 GROMMET SET
5	1	UNC4-40x32.5 JACKSCREW
6	2	M3 NUT

spec ref	-	dr	Dipu Joseph	2020/09/22	projection	mm	size	A3	scale	3:2
tolerance std	ISO 406 ISO 1101	eng	Detouillon, Da	2020/11/17	chr	-	ecn no	-	rel level	Released
surface	ISO 1302	appr	Wollin, Severi	2020/11/13	product family	-	cat. no.	-	Product - Customer Drw	sheet 1 of 4
linear	0.X ±0.3 0.XX ±0.10 0.XXX ±0.005	Amphenol FCi	title	DSUB METALIZED HOOD ANGLED	dwg no	8655AZxx2A11KLF	rev	A		
angular	0° ±2°									

PART NUMBER	PACK	HOOD SIZE
8655AZAS2A11KLF	KIT	15

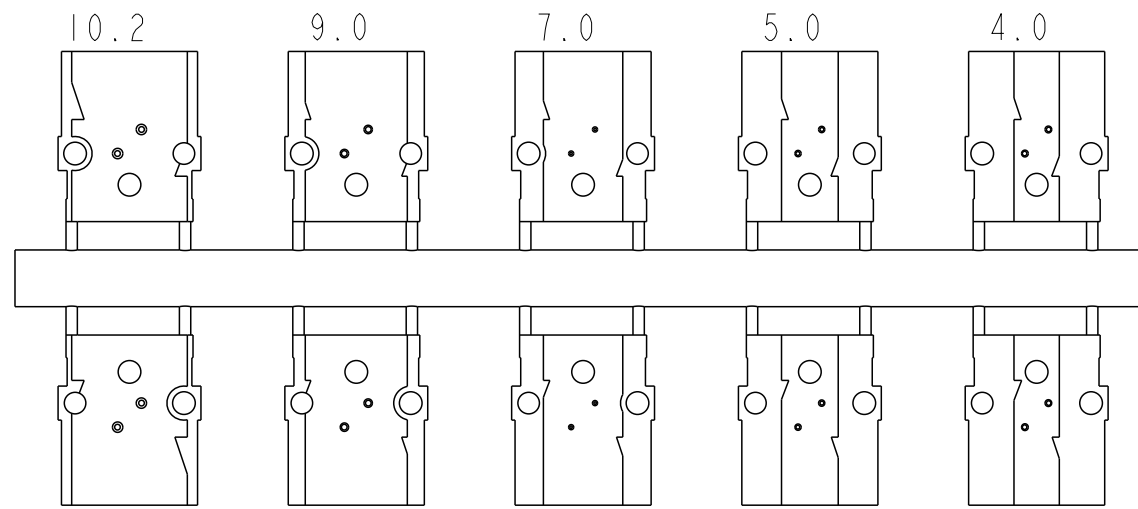
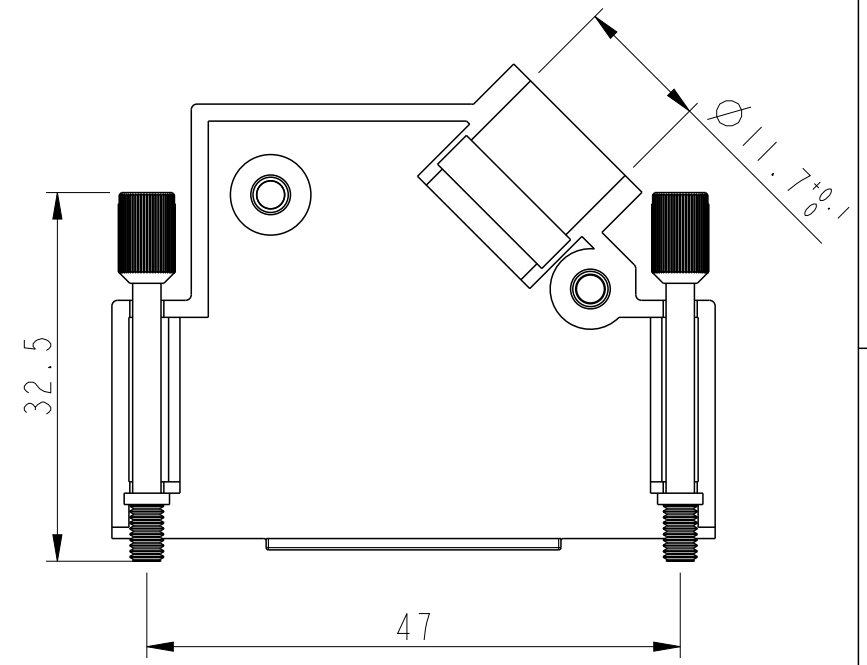
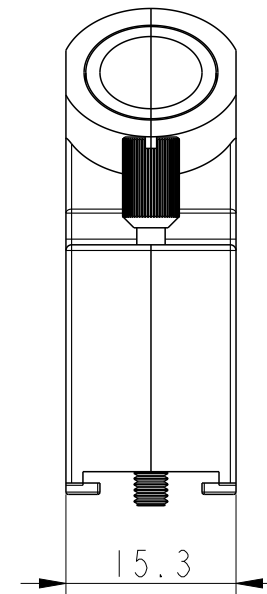
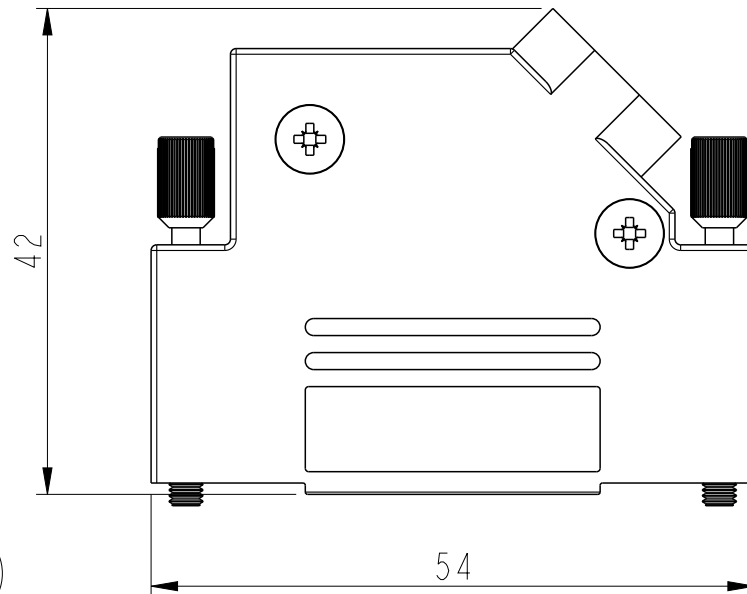
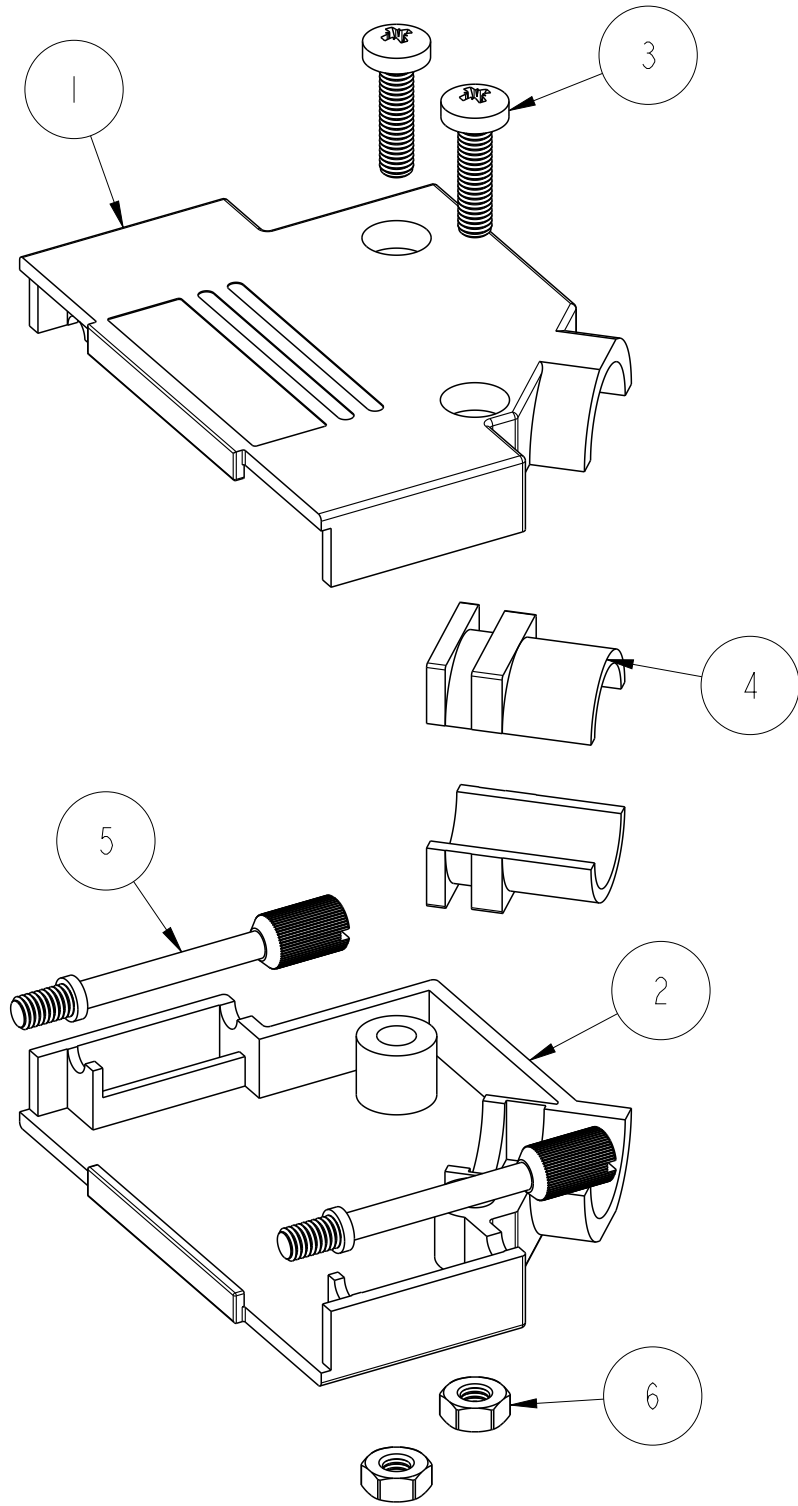


GROMMET SET

ITEM NO.	QTY.	PART DESCRIPTION
1	1	D45PK15-UPPER COVER
2	1	D45PK15-LOWER COVER
3	2	M3X11.5 SCREW
4	1	D45ZK-D2 GROMMET SET
5	2	UNC4-40x32.5 JACKSCREW
6	2	M3 NUT

spec ref	-	dr	Dipu Joseph	2020/09/22	projection	mm	size	A3	scale	3:2
tolerance std	ISO 406 ISO 1101	eng	Detouillon, Da	2020/11/17	chr	-	ecn no	-	rel level	Released
surface	linear	appr	Wollin, Severi	2020/11/13	product family	-	cat. no.	-	Product - Customer Drw	sheet 2 of 4
ISO 1302	angular	0°	±2°	Amphenol FCi	DSUB METALIZED HOOD ANGLED	dwg no	8655AZx2A11KLF	rev	A	

PART NUMBER	PACK	HOOD SIZE
8655AZBS2A11KLF	KIT	25

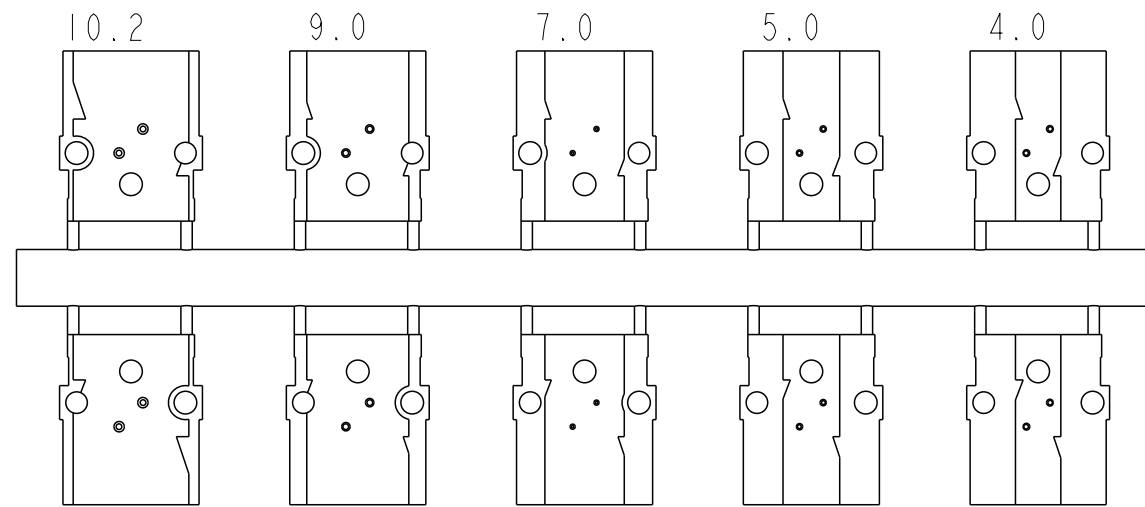
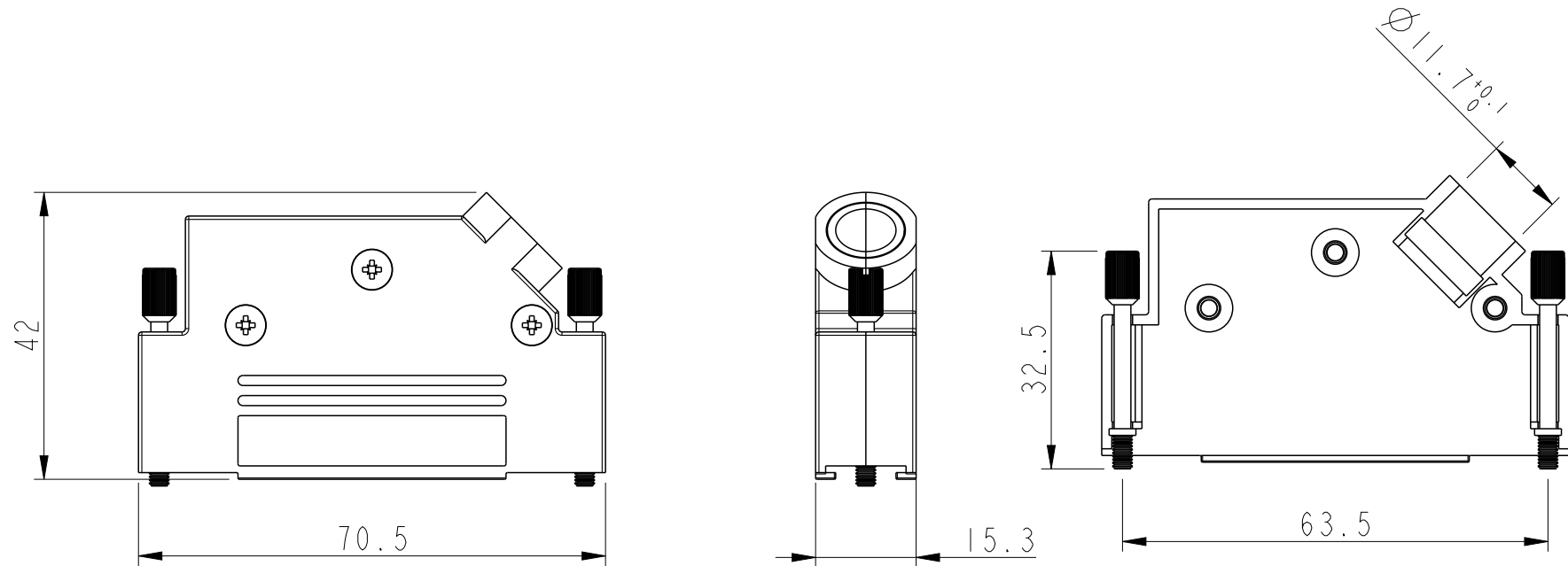
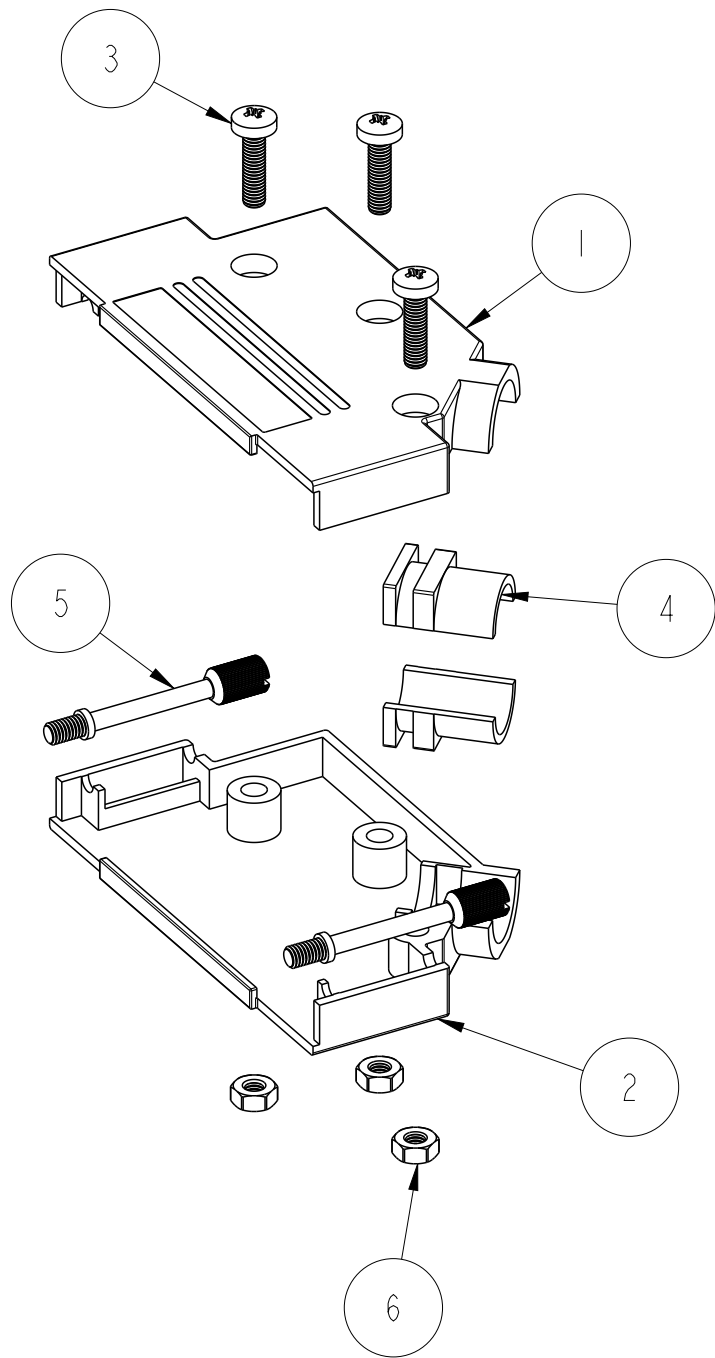


GROMMET SET

ITEM NO.	QTY.	PART DESCRIPTION
1	1	D45PK25-UPPER COVER
2	1	D45PK25-LOWER COVER
3	2	M3X11.5 SCREW
4	1	D45ZK-D2 GROMMET SET
5	2	UNC4-40x32.5 JACKSCREW
6	2	M3 NUT

spec ref -				dr	Dipu Joseph	2020/09/22	<div>projection</div> <div></div> <div>mm</div> <div></div>	size	A3	scale	1:1
tolerance std	TOLERANCES UNLESS OTHERWISE SPECIFIED			eng	Detouillon, Da	2020/11/17		<div>ecn no</div> <div>-</div>			
				chr	-	-					
				appr	Wollin, Severi	2020/11/13			<div>product family</div> <div>-</div>	<div>rel level</div> <div>Released</div>	
<div>surface</div> <div>ISO 1302</div>	linear	0.X	±0.3	<div>Amphenol</div> <div>FCi</div>	<div>title</div> <div>DSUB METALIZED HOOD ANGLED</div> <div>-</div>	<div>dwg no</div> <div>8655AZxx2A11KLF</div>	<div>rev</div> <div>A</div>				
		0.XX	±0.10								
		0.XXX	±0.005								
	angular	0°	±2°					<div>cat. no.</div> <div>-</div>	<div>Product - Customer Drw</div>	<div>sheet 3 of 4</div>	

PART NUMBER	PACK	HOOD SIZE
8655AZCS2A11KLF	KIT	37



GROMMET SET

ITEM NO.	QTY.	PART DESCRIPTION
1	1	D45PK37-UPPER COVER
2	1	D45PK37-LOWER COVER
3	2	M3X11.5 SCREW
4	1	D45ZK-D2 GROMMET SET
5	2	UNC4-40x32.5 JACKSCREW
6	2	M3 NUT

spec ref	-	dr	Dipu Joseph	2020/09/22	projection	mm	size	A3	scale	1:1
tolerance std	ISO 406 ISO 1101	eng	Detouillon, Da	2020/11/17	chr	-	ecn no	-	rel level	Released
surface	ISO 1302	appr	Wollin, Severi	2020/11/13	product family	-	cat. no.	-	Product - Customer Drw	sheet 4 of 4
linear	0.X ±0.3 0.XX ±0.10 0.XXX ±0.005	Amphenol FCi	title	DSUB METALIZED HOOD ANGLED	dwg no	8655AZxx2A11KLF	rev	A		
angular	0° ±2°									