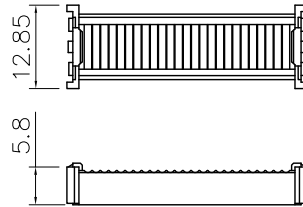
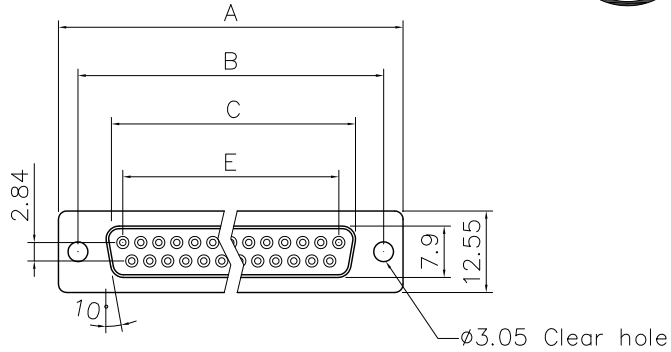
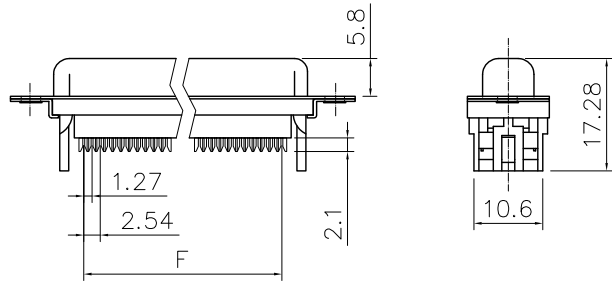


This document is the property of Amphenol Corporation and is delivered on the express condition that it is not to be disclosed, reproduced or used, in whole or in part, for manufacture or sale by anyone other than Amphenol Corporation without its prior consent, & that no right is granted to disclose or to use any information in this document.

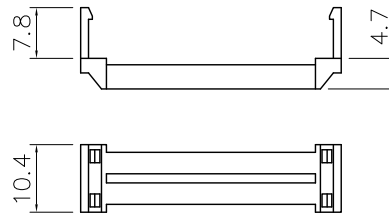
# Customer drawing



Cover



Without Insulator Support



Strain Relief

## Dimensions

Positions	A	B	C	E	F
9	30.81	24.99	16.33	11.08	10.16
15	39.20	33.30	24.70	19.39	17.78
25	53.05	47.04	38.40	33.24	30.48
37	69.40	63.50	54.80	49.86	45.72

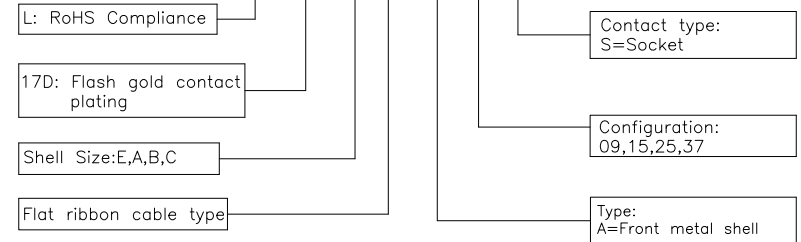
REVISIONS				
SYM	ECN	DESCRIPTION	DATE	APPROVED
1	HK--	First Release Drawing	04/17/08	IP
2	HK--	Update the Drawing	11/29/13	IP

## D-SUB TECHNICAL DATA

SHELL : Steel, 100u" Tin Over 50u" min nickel over 50u" min Copper  
 BODY : Glass-Filled Thermoplastic PBT,UL94V-0  
 CONTACTS : Copper alloy  
 Gold flash over 50u" nickel on mating area  
 100u" tin over 50u" nickel on solder area  
 ELECTRICAL : Voltage rating 250 VAC/Rms 60Hz  
 Current Rating :3 AMP  
 Withstanding Voltage >1000 VAC Rms  
 Insulation resistance >1000 M Ohms  
 Contact resistance 20 mOhms max  
 MARKING : Amphenol-...(Series No.)  
 Commercial reference  
 Manufacturing date

## PRODUCT CODE

L 17D X FR A XX S



UNLESS OTHERWISE SPECIFIED TOLERANCES		APPROVAL		DATE
U.S.	METRIC	DRAWN	Checked	11/29/13
.X +/-	0.50	Felix Liu		
.XX +/-	0.30			
.XXX +/-	0.20	Checked	Tony Tang	11/29/13
FRACTIONS +/-		DRAWING FILE :		
ANGLES +/-	5°	ANGLE OF PROJECTION		
FOR MATERIALS AND FINISHES SEE NOTES				
REMOVE SHARP EDGES				
DIMENSIONS		SCALE		
U.S.	INCHES	NONE		
METRIC	MM	SHEET 1 OF 1		

Amphenol		TITLE
Amphenol East Asia Limited		
SIZE		DRAWING NO.
A4		C L17DXFRAXXS
SCALE		REV.
NONE		2