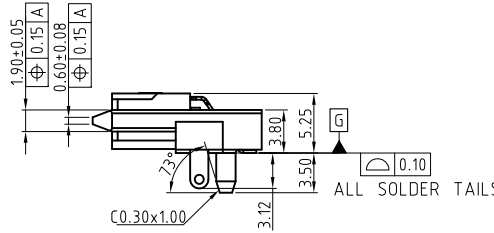
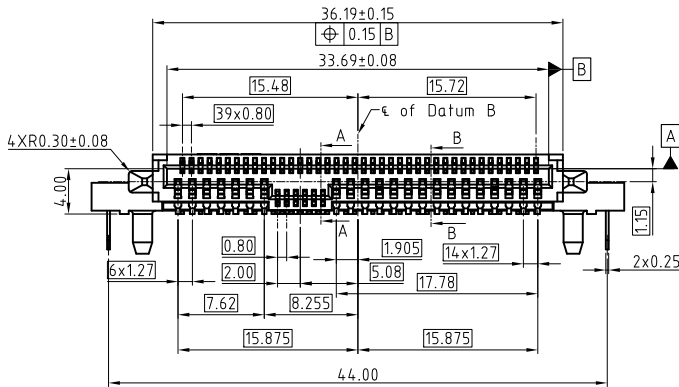
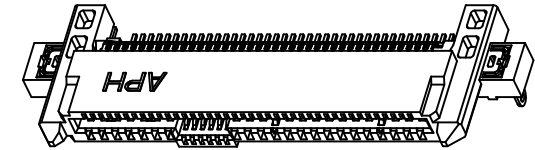
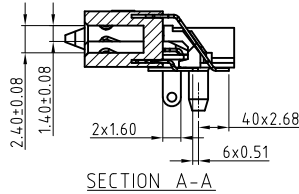
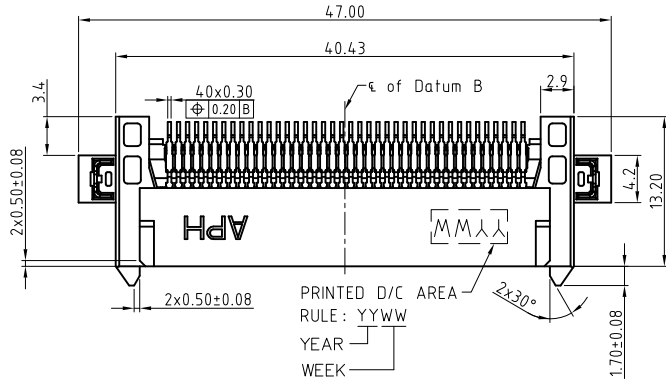


This document is the property of Amphenol Corporation and is delivered on the express condition that it is not to be disclosed, reproduced or used, in whole or in part, for manufacture or sale by anyone other than Amphenol Corporation without its prior consent, & that no right is granted to disclose or to use any information in this document.

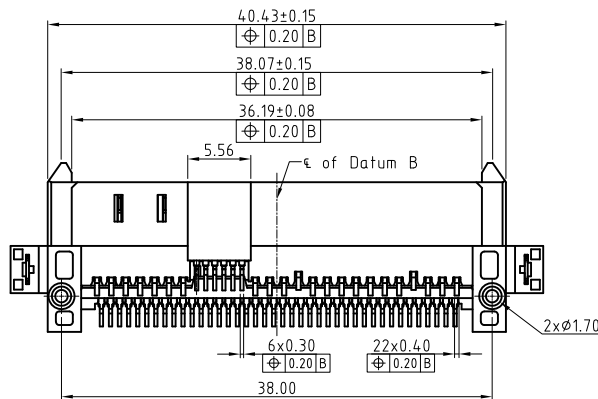
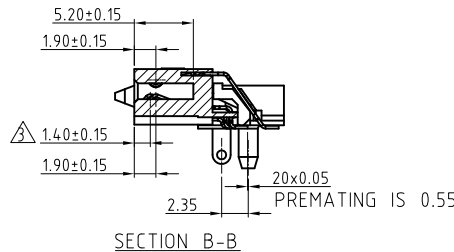
REVISIONS				
SYM	ECN	DESCRIPTION	DATE	APPROVED
1	NA	FIRST RELEASE	06/07/18	IP



NOTES

- MATERIAL
 - HOUSING: HIGH TEMPERATURE THERMOPLASTIC, UL94V-0, COLOR:BLACK.
 - CONTACTS : PHOSPHOR BRONZE
PLATING: REFER TO P/N SYSTEM ON MATING AREA.
1.27um MIN NICKEL UNDER PLATED OVERALL.
2.54um MIN PURE MATTE TIN ON SOLDER TAILS.
 - SOLDER CLIPS: COPPER ALLOY
2.54um MIN PURE MATTE TIN OVER 1.27um MIN NICKEL.
- GENERAL SPECIFICATION
 - CURRENT RATING: 1.5A/PER PIN (POWER SECTION).
 - CONTACT RESISTANCE: 30mΩ MAX (INITIAL).
 - INSULATOR RESISTANCE: 1000MΩ MIN.
 - DIELECTRIC WITHSTANDING VOLTAGE: 500 VAC
 - OPERATION TEMPERATURE: 0°C~+55°C
- PREMATING AT P4 & P12
- DIMENSIONING SHALL BE INTERPRETED PER ASME Y14.5M 1994.
- MATERIAL SHOULD BE FULFILLED AMPHENOL SPEC.# S-SN-002, FOR HALOGEN FREE PRODUCTS, ALSO NEED TO MEET S-SN-004.
- ORDER P/N SYSTEM: PN WITH OR W/O "-" IS THE SAME
PSAS4F213002XXX

MATING AREA PLATING PACKING STYLE
 1- 0.76um MIN Au. NIL- TRAY
 2- 0.38um MIN Au. TR- TAPE AND REEL
 3- Gold FLASH



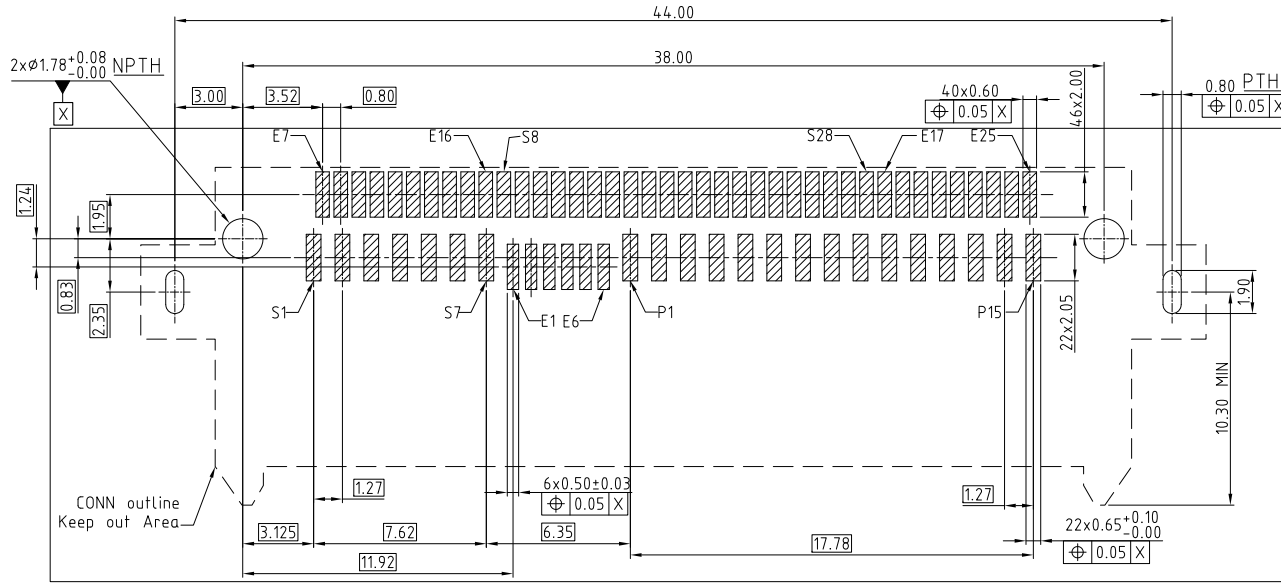
CUSTOMER DRAWING



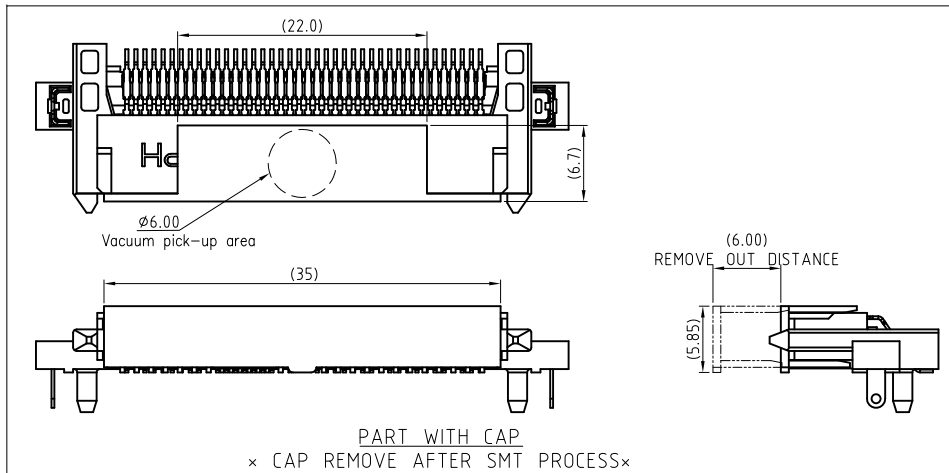
UNLESS OTHERWISE SPECIFIED TOLERANCES		APPROVAL	DATE	Amphenol Amphenol East Asia Limited
		DRAWN Jackie Tan	06/07/18	
		CHECKED Xiang Wang	06/07/18	
		CHECKED		
DRAWING FILE : Drawing\PSAS\PSAS4F213002XXX-1		TITLE Customer Drawing For U.2 GEN4 R/A SMT RECEPTACLE		
REMOVE SHARP EDGES		ANGLE OF PROJECTION		SIZE DRAWING NO. A3 PSAS4F213002XXX
DIMENSIONS		SCALE		REV. 1
U.S. INCHES (METRIC) (MM)		NONE		SHEET 1 OF 3

This document is the property of Amphenol Corporation and is delivered on the express condition that it is not to be disclosed, reproduced or used, in whole or in part, for manufacture or sale by anyone other than Amphenol Corporation without its prior consent, & that no right is granted to disclose or to use any information in this document.

REVISIONS				
SYM	ECN	DESCRIPTION	DATE	APPROVED
REFER TO SHEET 1				



RECOMMENDED PCB LAYOUT (Top View) T=2.0mm
GENERAL TOLERANCE ±0.05mm



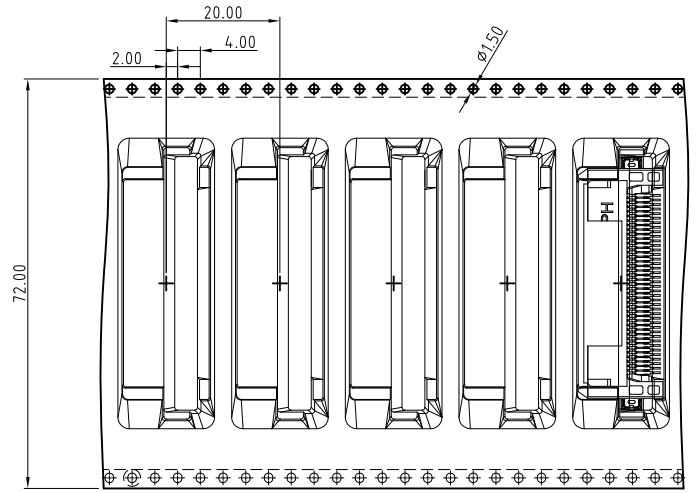
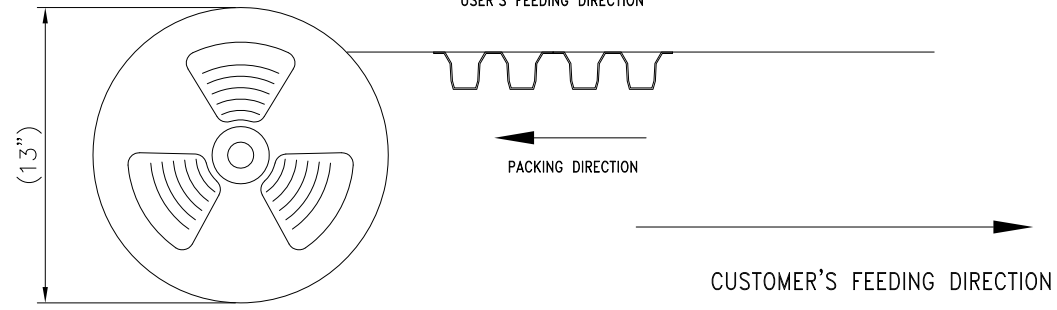
CUSTOMER DRAWING

UNLESS OTHERWISE SPECIFIED TOLERANCES U.S. METRIC .X +/- 0.50 .XX +/- 0.25 .XXX +/- 0.20 FRACTIONS +/- 3' ANGLES +/- FOR MATERIALS AND FINISHES SEE NOTES REMOVE SHARP EDGES DIMENSIONS U.S. INCHES (METRIC) (MM)	APPROVAL DRAWN Jackie Tan 06/07/18 CHECKED Xiang.Wang 06/07/18 CHECKED	DATE 06/07/18	Amphenol Amphenol East Asia Limited TITLE Customer Drawing For U.2 GEN4 R/A SMT RECEPTACLE
	DRAWING FILE : Drawing\PSAS\PSAS4F213002XXX-1		
	SIZE A3	DRAWING NO. PSAS4F213002XXX	
SCALE NONE		SHEET 2 OF 3	

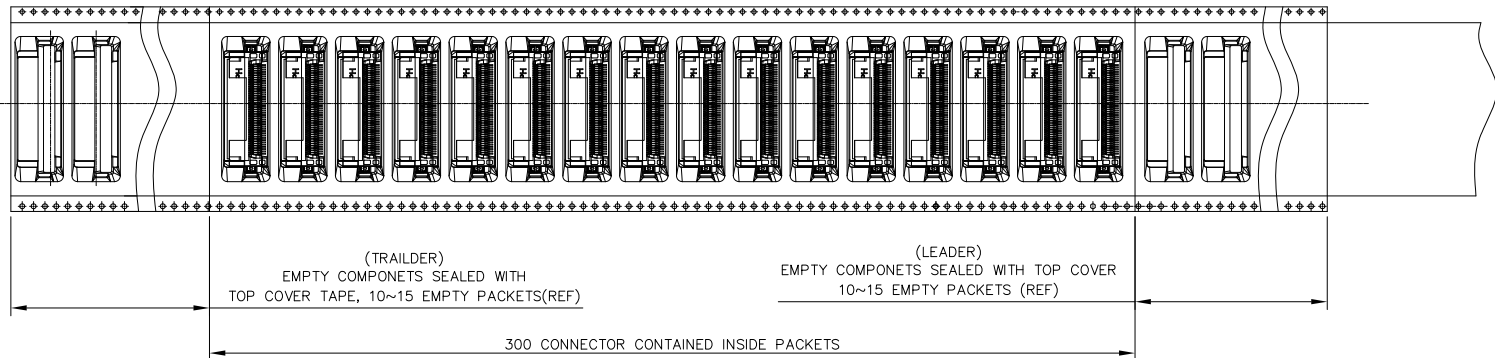
This document is the property of Amphenol Corporation and is delivered on the express condition that it is not to be disclosed, reproduced or used, in whole or in part, for manufacture or sale by anyone other than Amphenol Corporation without its prior consent, & that no right is granted to disclose or to use any information in this document.

REVISIONS				
SYM	ECN	DESCRIPTION	DATE	APPROVED
REFER TO SHEET 1				

D
C
B
A



DETAIL A
SCALE 2:1



CUSTOMER DRAWING



UNLESS OTHERWISE SPECIFIED		APPROVAL	DATE	Amphenol Amphenol East Asia Limited TITLE Customer Drawing For U.2 GEN4 R/A SMT RECEPTACLE
TOLERANCES		DRAWN	06/07/18	
U.S. METRIC		CHECKED	06/07/18	
.X +/- 0.50 .XX +/- 0.25 .XXX +/- 0.20 FRACTIONS +/- 3" ANGLES +/-		CHECKED		
FOR MATERIALS AND FINISHES SEE NOTES		DRAWING FILE : Drawing\PSAS\PSAS4F213002XXX-1		SIZE DRAWING NO. A3 PSAS4F213002XXX SCALE NONE SHEET 3 OF 3
REMOVE SHARP EDGES		ANGLE OF PROJECTION		REV. 1
DIMENSIONS				
U.S. INCHES				
(METRIC) (MM)				