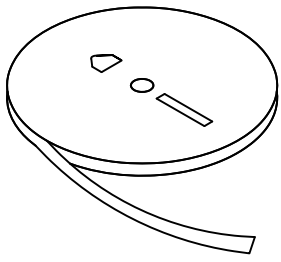
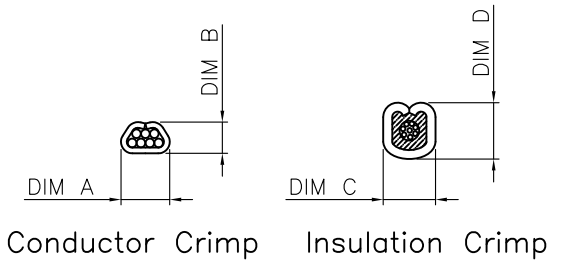
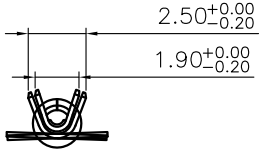
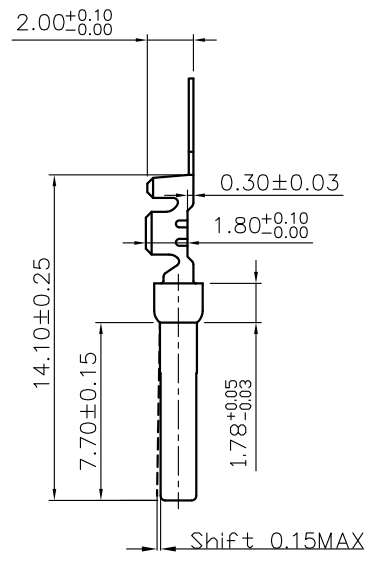
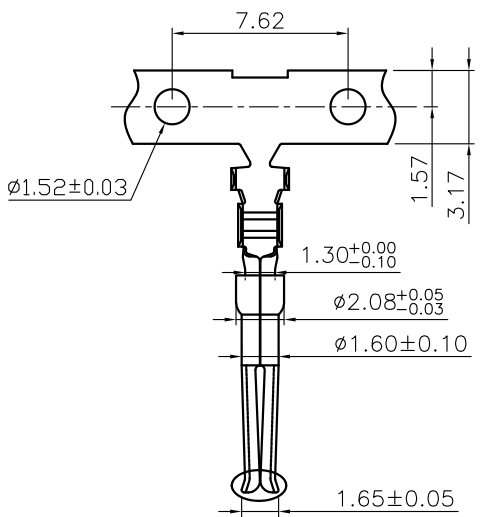
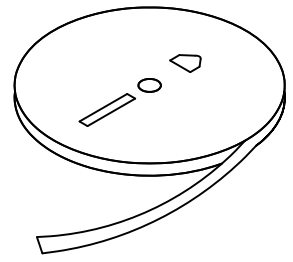


This document is the property of Amphenol Corporation and is delivered on the express condition that it is not to be disclosed, reproduced or used, in whole or in part, for manufacture or sale by anyone other than Amphenol Corporation without its prior consent, & that no right is granted to disclose or to use any information in this document.



counterclockwise(left hand feed) winding



clockwise (right hand feed)winding



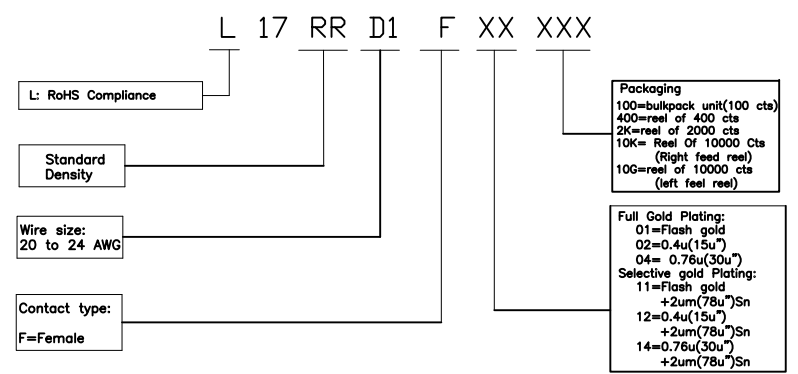
REVISIONS				
SYM	ECN	DESCRIPTION	DATE	APPROVED
1	HK--	First Release Drawing	Apr/23/2013	IP
2	HK--	Update Drawing	12/18'18	IP
3	HK--	Add crimp specifications	04/03'19	IP

Material: Brass(C2680-EH)

For reference only
Strip Length: 2.8mm
Acceptance Insulation OD:1.2~2.0mm

24 AWG	1.4	1.3	1.7	1.7
22 AWG	1.6	1.5	1.9	1.9
20 AWG	1.8	1.7	2.1	2.1
WIRE RANGE	DIM A	DIM B	DIM C	DIM D

PRODUCT CODE



UNLESS OTHERWISE SPECIFIED TOLERANCES		APPROVAL	DATE
.X +/-	0.50	DRAWN	Feb. Liu Apr/23/2013
.XX +/-	0.30	CHECKED	Tony Tang Apr/23/2013
.XXX +/-	0.20	CHECKED	
FRACTIONS +/-	5'		
ANGLES +/-			
FOR MATERIALS AND FINISHES SEE NOTES		DRAWING FILE :	
REMOVE SHARP EDGES		ANGLE OF PROJECTION	
DIMENSIONS			
U.S.	INCHES		
METRIC	MM		

Amphenol		
TITLE RR crimping contact Female		
SIZE A4	DRAWING NO. L17RRD1FXXXXX	REV. 3
SCALE NONE	SHEET 1 OF 1	