

# SR Series

## AC Connectors



**UL Recognized  
CSA Certified  
VDE Approved  
SEMKO Approved†**

### SR Series

The SR series includes a full line of popular AC receptacles. These male and female power line connectors include snap-in and flange mounted models. All have complete safety agency approvals for worldwide usage.



6ESRF-3\*

6ESRFC3\*

\* UL recognized and CSA certified for 15 amps at 125V. VDE approved for 10 amps at 250V.

† Panel thickness tolerance is  $\pm .004"$  ( $\pm .10mm$ ).



6ESRM-P

6ESRM-3

6ESRMC2

### Specifications

Operating voltages: 125, 250 VAC

Materials:

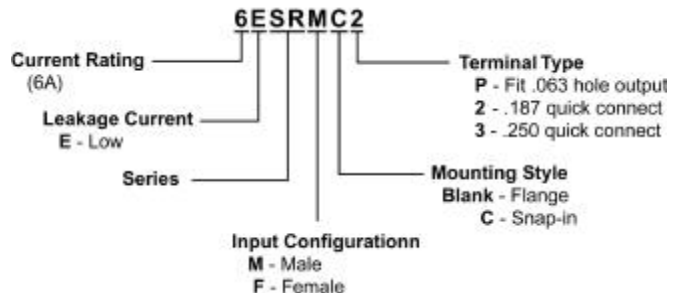
Insulator: Thermoplastic (UL V-2 flame class)  
Prongs: Solid brass, nickel plated  
Terminals: Brass, tin plated

Power connector: Appliance inlet according to  
CEE 22/VI (XIV), IEC 320/VI,  
DIN 49457/1, SEV Type 113, SNV 24573

Temperature rating: For "cold" connections, 65° C

### Ordering Information

Consult your local Corcom sales representative for pricing.



### Available Part Numbers

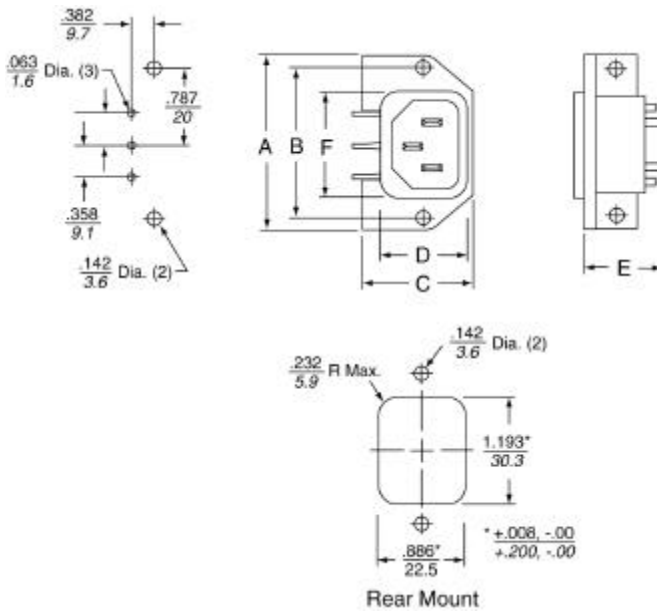
6ESRM-P  
6ESRM-3  
6ESRMC2  
6ESRFC3  
6ESRF-3

†Except 6ESRF-3 and 6ESRFC3 models.

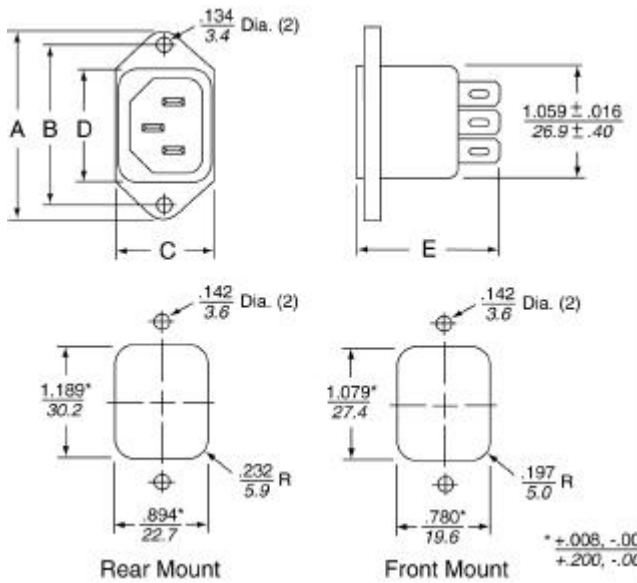
## Case Styles

Metric shown in italics.

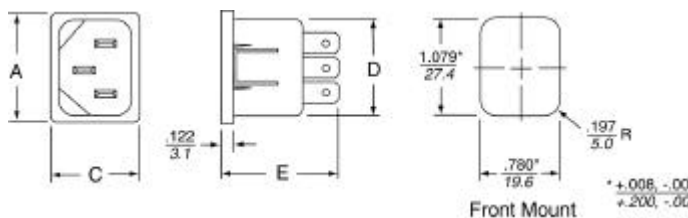
### 6ESRM-P (Flange)



### 6ESRM-3 (Flange)



### 6ESRMC2 (Snap-in)



Panel Cutout thickness of .059 (1.5).

tolerance  $\pm \frac{.004}{.10}$

## Case Dimensions

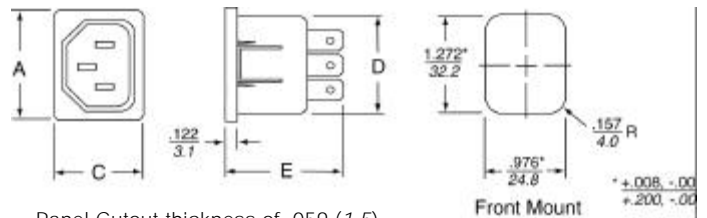
Metric shown in italics.

Part No.	A (max)	B $\pm .017 - .006$ $\pm .43 - .15$	C (max)	D (max)	E (max)	F (max)
6ESRM-P	1.969 50.0	1.575 40.0	1.11 28.2	0.88 22.4	1.051 26.7	1.192 30.28
6ESRM-3	1.977 50.2	1.575 40.0	0.896 22.8	1.187 30.1	1.224 31.09	—
6ESRMC2	1.197 30.4	—	0.892 22.7	1.078 27.4	1.205 30.6	—
6ESRFC3	1.39 35.3	—	1.11 28.2	1.258 31.95	1.406 35.7	—
6ESRF-3	1.969 50.0	1.575 40.0	1.154 29.3	1.258 31.95	1.406 35.6	—

## Case Styles

Metric shown in italics.

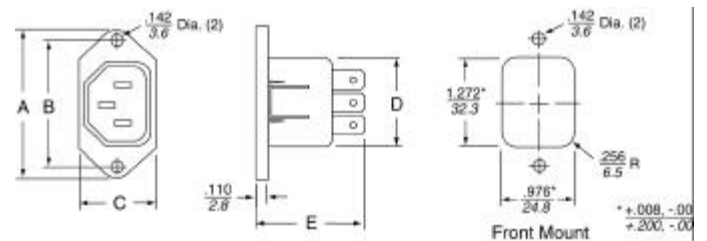
### 6ESRFC3 (Snap-in)



Panel Cutout thickness of .059 (1.5).

tolerance  $\pm \frac{.004}{.10}$

### 6ESRF-3 (Flange)



Snap-in models allow front mounting only.