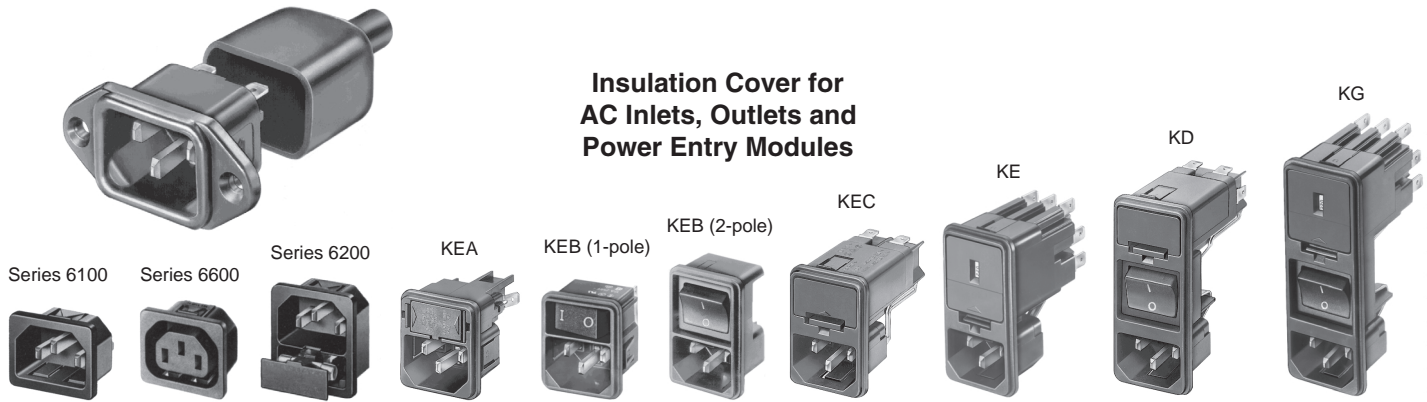


Accessories For AC Inlets, Plugs and Power Entry Modules



Insulation Cover for AC Inlets, Outlets and Power Entry Modules

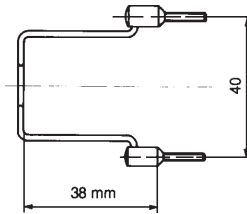
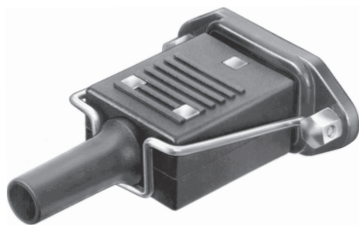
Technical Data:

- Material: flexible plastic PVC
- Surface resistance: $7.8 \times 10^8 \Omega$ at 23° C, 63% humidity
- Easily mountable from back side
- Oxygen Index Rating: 30 (tested by Cookson Labs)
Based on the Oxygen Index Rating, material qualifies for UL 94V-O

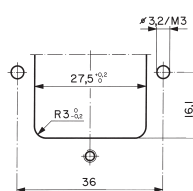
Order Numbers

Series	Order No.	Series	Order No.
KEA (except pcb mount type)	0859.0047	KG / CG with or without bowden cable	0859.0109
KEB (1-pole) all part numbers	0859.0047	CD with or without bowden cable	0859.0077
KEB (2-pole) all part numbers	0859.0075	CE all part numbers	0859.0108
KEC / KFC all part numbers	0859.0072	Series 6100 / 6102 / 6110 / 6120	0859.0048
KD with or without bowden cable	0859.0074	Series 6200 / 6202 / 6220 / 6600	0859.0047
KE all part numbers	0859.0076		

Cord Retaining Clamp (to prevent loosening or accidental removal)



0888.0001
Clamp with hexnuts

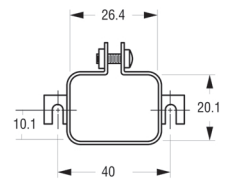
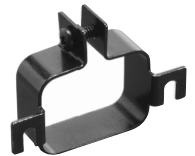


Drawing for 0888.0004/0005
only: Clamp with hexnuts

Order No.	Dim. A (mm)
1 0888.0001	38.0
2 0888.0004	39.0
3 0888.0005	41.0
4 0888.0015	45.5
5 0888.0016	48.0
6 0888.0017	43.0

For filter type:
nominal size +0.5mm

NEW



Order No. 0888.0021

Selection Chart for Cord Retaining Clamp

Select desired inlet and plug. Match corresponding number to legend at right to identify retaining clamp order number.

Plug \ Inlet	Inlet																								
	KEA snap-in	KEA / KFA screw-on	KEB I snap-in	KEB I / KFB I screw-on	KEB II / KFB II	KEC / KFC	KD / CD	KE / CE	KG / CG	KFS / KFX	FELCOM 54 / 64	5100 screw-on	5110 screw-on	5200 screw-on	5220 screw-on	6100 screw-on	6100 snap-in	6110 screw-on	6110 snap-in	6200 screw-on	6200 snap-in	6220 screw-on	6220 snap-in	6600 screw-on	
4300.0602	3	2	3	2	3	3	3	3	3	1	3	1	1	2	2	1	3			2	3	2	3		
4300.0603																		4	5						
4300.0407																									6

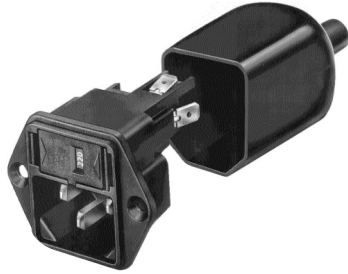
APPLIANCE CONNECTORS ACCESSORIES



Insulating cover

The terminals of the SCHURTER appliance plugs can be protected against unintentional contact by the use of an additional insulation cover.

They are made of flexible thermoplastic (UL 94V-0), black and can be mounted easily from the rear with the corresponding appliance plugs.



Order No.	suitable for
0859.0047	KEA (without KEA-Print)
	KEB I
	6200, 6202, 6205, 6220
	6600
0859.0048	6100, 6102
0859.0072	KEC, KFC
0859.0074	KD
0859.0075	KEB II
0859.0076	KE
0859.0077	CD
0859.0108	CE
0859.0109	CG, KG

Cord retaining kits

For protection against loosening or accidental removal of the plug connector. Can also be mounted later.

The correct kit type for each combination of fixed and free components is shown in the selection chart below. The corresponding

Order No. for each kit type is shown in the smaller chart.

Horizontal flanged components are secured to the panel using the kit supplied. Vertical flanged or snap-in components require additional drilling for the cord retaining kit as shown in the diagrams below.

Each cord retaining kit consists of:

- 1 Stainless steel retaining spring
- 2 Nickel plated brass pillars
- 2 Nickel plated brass nuts
- 2 Nickel plated beryllium copper crinkle washers



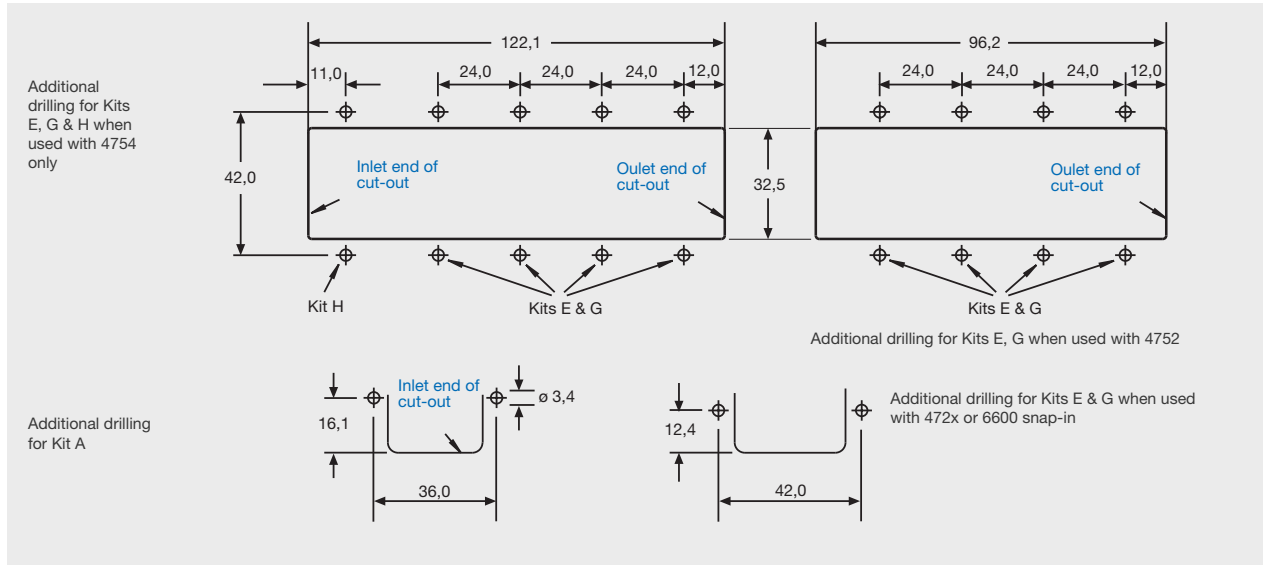
Cut-aways or countersinks on pillars to face inwards.

Order No.	Kit type
4700.0001	A ¹⁾
4700.0002	B ¹⁾
4700.0003	C ¹⁾
4700.0004	D ¹⁾
4700.0005	E ¹⁾
4700.0006	F
4700.0007	G
4700.0008	H
4700.0009	J
4700.0010	K

Cord retaining kits Selection Chart

Plug or connector for cable	Appliance inlet or outlet																																
	KEA snap-in	KEA / KFA screw-on	KEB I snap-in	KEB I / KFB I screw-on	KEB II / KFB II	KEC / KFC	KD / CD	KE /CE	KG / CG	KFS / KFX	FELCOM / 54/64	4707	4721 screw-on	4723 snap-in	4752	4797	4798	4754	5100 screw-on	5110 screw-on	5200 screw-on	5220 screw-on	6100 screw-on	6100 snap-in	6110 screw-on	6110 snap-in	6200 screw-on	6200 snap-in	6220 screw-on	6220 snap-in	6600 screw-on	6600 snap-in	
4781.0000 4781.0100	A	B	A	B	A	A	A	A	A	C	A	B						H	C	C	B	B	C	A	C	A	B	A	B	A			
4782.0000 4782.0100																																	
4732.0000													D	E	E			E														D	E
4735.0000													F	G	G			G															
4795.0000																		K															
4796.0000																J																	

¹⁾ substitute for order nos. 0888.0001–0888.0017 from SCHURTER Inc.; see conversion list page 2.



Cord retaining kits:

Conversion chart SCHURTER Inc. to SCHURTER LTD.

Plug or connector for cable	Appliance inlet or outlet	4781.0000 4781.0100 4782.0000 4782.0100 4732.0000	(4300.0407) ¹⁾	4735.0000	4300.0602 ¹⁾	4300.0603 ¹⁾	4795.0000	4796.0000
KEA snap-in	4700.0001	—	—	—	0888.0005	*	—	—
KEA / KFA screw-on	4700.0002	—	—	—	0888.0004	*	—	—
KEB I snap-in	4700.0001	—	—	—	0888.0005	*	—	—
KEB I / KFB I screw-on	4700.0002	—	—	—	0888.0004	*	—	—
KEB II / KFB II	4700.0001	—	—	—	0888.0005	*	—	—
KEC / KFC	4700.0001	—	—	—	0888.0005	*	—	—
KD / CD	4700.0001	—	—	—	0888.0005	*	—	—
KE / CE	4700.0001	—	—	—	0888.0005	*	—	—
KG / CG	4700.0001	—	—	—	0888.0005	*	—	—
KFS / KFX	4700.0003	—	—	—	0888.0001	*	—	—
FELCOM 54/64	4700.0001	—	—	—	0888.0005	*	—	—
5100 screw-on	4700.0003	—	—	—	0888.0001	*	—	—
5110 screw-on	4700.0003	—	—	—	0888.0001	*	—	—
5200 screw-on	4700.0002	—	—	—	0888.0004	*	—	—
5220 screw-on	4700.0002	—	—	—	0888.0004	*	—	—
6100 screw-on	4700.0003	—	—	—	0888.0001	*	—	—
6100 snap-in	4700.0001	—	—	—	0888.0005	*	—	—
6110 screw-on	4700.0003	—	—	—	—	0888.0015	—	—
6110 snap-in	4700.0001	—	—	—	—	0888.0016	—	—
6200 screw-on	4700.0002	—	—	—	0888.0004	*	—	—
6200 snap-in	4700.0001	—	—	—	0888.0005	*	—	—
6220 screw-on	4700.0002	—	—	—	0888.0004	*	—	—
6220 snap-on	4700.0001	—	—	—	0888.0005	*	—	—
6600 screw-on	—	4700.0004 0888.0017	—	4700.0006	—	—	—	—
4707	4700.0002	—	—	—	*	*	—	—
4721 screw-on	—	4700.0004	—	4700.0006	—	—	—	—
4723 snap-in	—	4700.0005	—	4700.0007	—	—	—	—
4752	—	4700.0005	—	4700.0007	—	—	—	—
4754	4700.0008	4700.0005	—	4700.0007	*	*	—	—
4797	—	—	—	—	—	—	—	4700.0009
4798	—	—	—	—	—	—	4700.0010	—
6600 snap-in	—	4700.0005	—	4700.0007	—	*	—	—

¹⁾ Part no from SCHURTER Inc.

* No existing retaining kit