



## STRAIGHT PLUGS SOLDER TYPE FOR SEMI RIGID CABLES

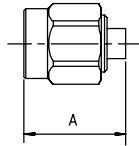
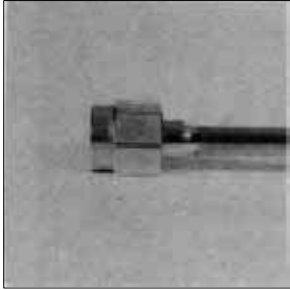


Fig. 1

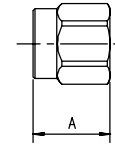


Fig. 2

Cable group	Part number (gold)	Part number (gold/passivated nut)	Fig.	Dimensions A (mm)	Captive center contact	Assembly	Note
.085"	R125 052 000*	R125 052 002	1	11.2	no	M10	single piece body
.085"		R125 052 102●	1	11.2	yes	M12	
.085"	R125 052 500●		1	11.2	no	M12	retractable coupling nut/ single piece body
.141"	R125 054 000	R125 054 002	2	8.5		M09	without center contact
.141"	R125 054 500	R125 054 502●	2	7.5		M09	without center contact/ retractable coupling nut
.141"	R125 055 000*	R125 055 002*	1	11.2	no	M10	single piece body
.141"	R125 055 100●	R125 055 102●	1	11.2	yes	M12	
.141"	R125 055 500		1	11.2	no	M10	retractable coupling nut/ single piece body
.141"	R125 057 000	R125 057 002	1	11.2		M09	without center contact

## RIGHT ANGLE PLUGS CRIMP TYPE FOR FLEXIBLE CABLES

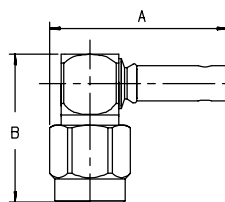


Fig. 1

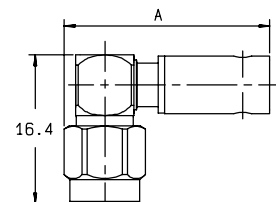


Fig. 2

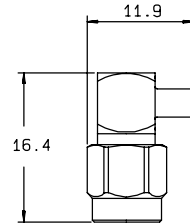
Cable group	Part number (gold)	Part number (passivated)	Fig.	Dimensions (mm)		Captive center contact	Assembly	Note
				A	B			
2 / 50 / S	R125 170 402		1	19.6	16.85	yes	M11	
2.6 / 50 / S	R125 172 000	R125 172 001*	1	19.6	16.4	yes	M11	single piece body
2.6 / 50 / D	R125 174 000		1	18.6	16.4	yes	M11	
2.6 / 50 / D		R125 174 011	1	18.6	16.85	yes	M11	
5 / 50 / S	R125 175 000	R125 175 001	2	21.8		yes	M11	single piece body
5 / 50 / D	R125 176 000	R125 176 001	2	21.8		yes	M11	

● upon request

\* packaging: 100 pieces. For unit packaging, add "W" after the P/N

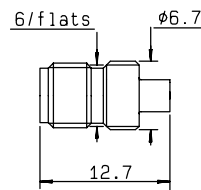
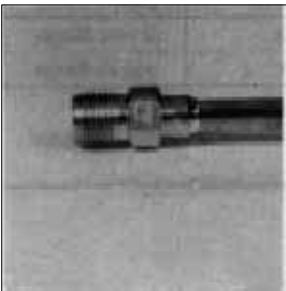


## RIGHT ANGLE PLUGS SOLDER TYPE FOR SEMI RIGID CABLES



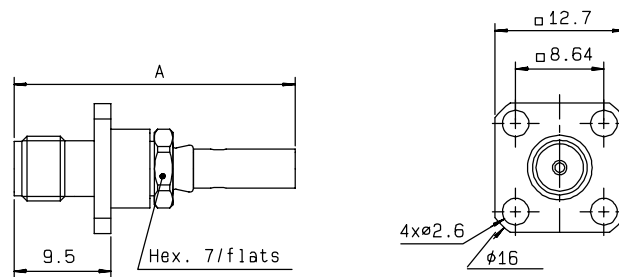
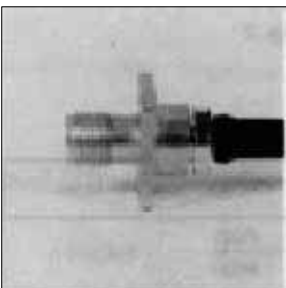
Cable group	Part number (gold)	Part number (gold/passivated nut)	Captive center contact	Assembly
.085"	<b>R125 153 000</b>	<b>R125 153 002*</b>	yes	M03
.141"	<b>R125 154 000*</b>	<b>R125 154 002*</b>	yes	M03

## STRAIGHT JACKS SOLDER TYPE FOR SEMI-RIGID CABLES



Cable group	Part number (gold)	Captive center contact	Assembly
.085"	<b>R125 222 000*</b>	no	M10
.141"	<b>R125 225 000*</b>	no	M10
.141"	<b>R125 225 102●</b>	yes	M12

## STRAIGHT FLANGE JACKS CRIMP TYPE FOR FLEXIBLE CABLES



Cable group	Part number (gold)	Part number (passivated)	Dimension A (mm)	Captive center contact	Assembly	Cut out
2.6 / 50 / S	<b>R125 272 000*</b>	<b>R125 272 001</b>	27.5	no	M06	P11
5 / 50 / S	<b>R125 277 000●</b>	<b>R125 277 001●</b>	29.6	no	M06	P11
5 / 50 / D	<b>R125 278 000●</b>	<b>R125 278 001●</b>	29.6	no	M06	P11

● upon request

\* packaging: 100 pieces. For unit packaging, add "W" after the P/N