

## RIGHT ANGLE PLUGS, CRIMP TYPE, FOR FLEXIBLE CABLE (captive center contact)

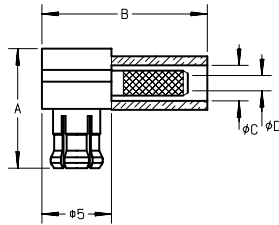
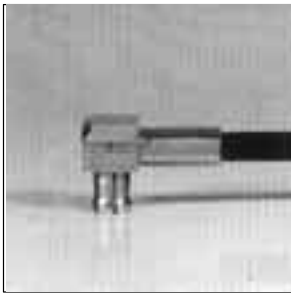


Fig. 1

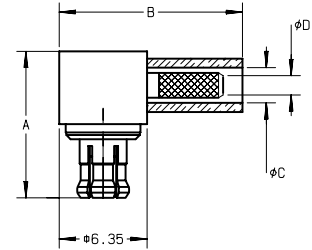
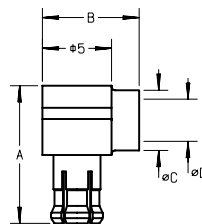
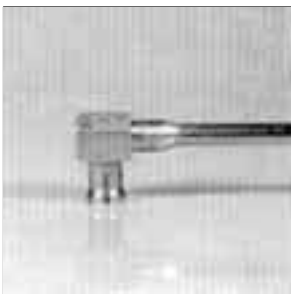


Fig. 2

cable group	part number	fig.	imp. ( $\Omega$ )	dimensions (mm)				mounting	finish
				A	B	C	D		
2 /50/ S	<b>R113 181 000</b>	1	50	8.6	11.9	2.55	1.1	M 05	Gold
2 /50/ S	<b>R113 181 020</b>	1	50	8.6	11.9	2.55	1.1	M 05	Nickel
2.6/50/ S	<b>R113 182 000</b>	1	50	8.6	11.9	2.95	1.65	M 05	Gold
2.6/50/ S	<b>R113 182 020</b>	1	50	8.6	11.9	2.95	1.65	M 05	Nickel
2.6/50/ D	<b>R113 183 000*</b>	1	50	8.6	11.9	3.25	1.65	M 05	Gold
2.6/50/ D	<b>R113 183 020</b>	1	50	8.6	11.9	3.25	1.65	M 05	Nickel
2.6/75/ S	<b>R213 182 007</b>	2	75	10.6	13.3	2.95	1.7	M 05	BBR
2.6/75/ D	<b>R213 183 007</b>	2	75	10.6	13.3	3.25	1.7	M 05	BBR

## RIGHT ANGLE PLUGS, SOLDER TYPE, FOR SEMI-RIGID CABLE (captive center contact)



cable group	part number	imp. ( $\Omega$ )	dimensions (mm)				mounting	finish
			A	B	C	D		
.047	<b>R113 151 000</b>	50	8.5	7	2	1.3	M 03	Gold
.047	<b>R113 151 020●</b>	50	8.5	7	2	1.3	M 03	BBR
.085	<b>R113 153 000●</b>	50	8.5	7	3	2.25	M 03	Gold
.085	<b>R113 153 020●</b>	50	8.5	7	3	2.25	M 03	BBR
.085	<b>R113 161 000*</b>	50	7.9	8	3	2.35	M 02	Gold
.085	<b>R113 161 020</b>	50	7.9	8	3	2.35	M 02	BBR
.141	<b>R113 155 000●</b>	50	9.3	7	4.35	3.05	M 03	Gold

● Upon request.

\* Packaging : 100 pieces. For unit packaging, please add W after the P/N