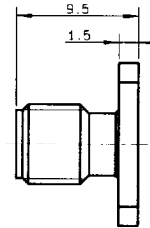
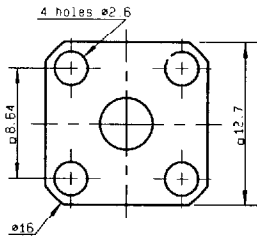
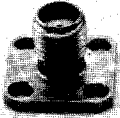


### UNIVERSAL SQUARE FLANGE FEMALE RECEPTACLE



To be used with removable contacts and insulators pages : 22 and 23

part number	panel drilling	finish
R124 410 000	P 04	BBR
R124 410 003	P 04	Gold

### NARROW FLANGE FEMALE RECEPTACLE

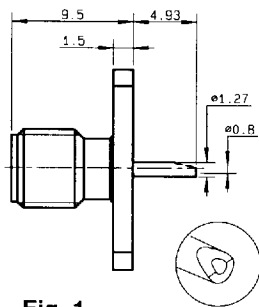


Fig. 1

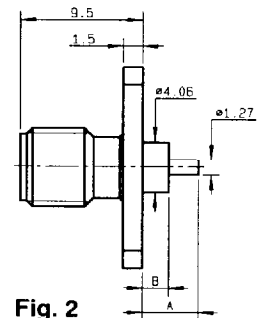
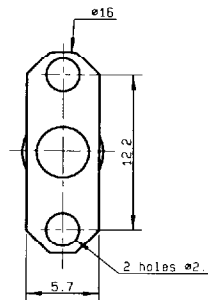


Fig. 2

part number	fig.	A	B	panel drilling	finish	note
R124 454 120	1			P 05	BBR	
R124 454 123	1			P 05	Gold	
R124 464 000	2*	15,9	12,7	P 05	BBR	4 Indents  Epoxy
R124 464 003	2*	15,9	12,7	P 05	Gold	
R124 464 270	2*	17,9	15	P 05	BBR	
R124 464 273	2*	17,9	15	P 05	Gold	
R124 464 004	2*	15,9	12,7	P 05	Gold	
R124 464 005	2*	15,9	12,7	P 05	BBR	
R124 464 274	2*	17,9	15	P 05	Gold	
R124 464 275	2*	17,9	15	P 05	BBR	
R124 463 300 XY	2*	Custom dimensions		P 05	Gold	Non captivated center contact
R124 463 307 XY	2*		P 05	BBR		
R124 464 300 XY	2*		P 05	Gold	Epoxy	
R124 464 307 XY	2*		P 05	BBR		
R124 466 300 XY	2*		P 05	Gold	4 indents	
R124 466 307 XY	2*		P 05	BBR		

\* : For more details, see Application guide for SMA extended dielectric receptacles D 1 125 DE.

Standard packaging : 100 pieces