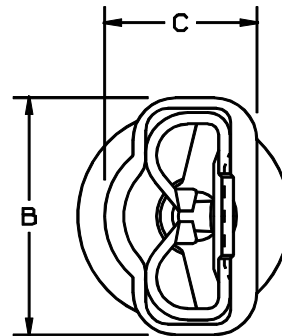
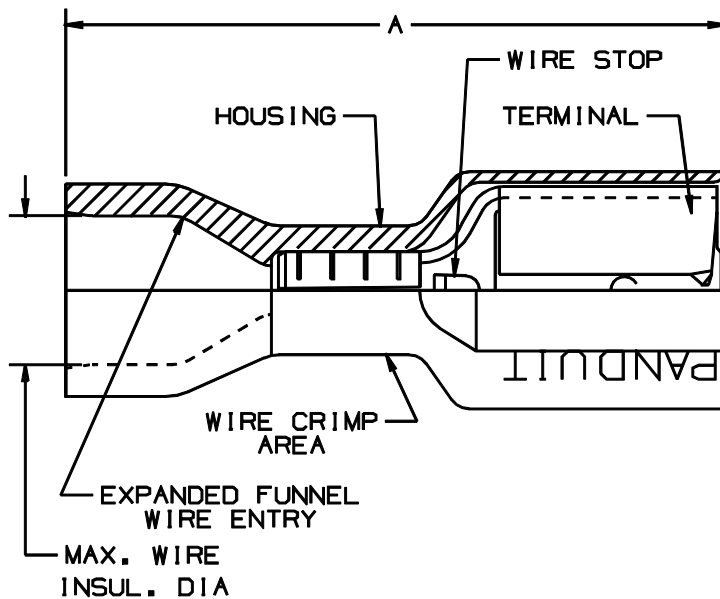


THIS COPY IS PROVIDED ON A RESTRICTED BASIS AND IS NOT TO BE USED IN ANY WAY DETRIMENTAL TO THE INTERESTS OF PANDUIT CORP.




NOTES:

- USED FOR:
 - A. 600V MAX VOLTAGE RATING
 - B. TEMPERATURE RATING OF INSULATION: 105°C (221°F)
 - C. STRANDED COPPER WIRE ONLY
 - D. 6-12 LBS INITIAL INSERTION/WITHDRAWAL FORCE
- PACKAGE QTY: -C = 100 PCS.
-M = 1000 PCS.
- MATERIAL:
 - A. STAMPING-CDA 260 BRASS, TIN PLATED
 - B. HOUSING-TYPE 66 NYLON
- DIMENSIONS IN BRACKETS ARE IN mm OR mm²
- COLORS ARE TRANSLUCENT
- RECOMMENDED INSTALLATION TOOL: CT-100 (POCKET A)
- WIRE STRIP LENGTH: $9/32^{+1/32}_{-0}$ (7.1 $^{+.8}_{-0}$)

PART NUMBER		TAB SIZE	WIRE RANGE AWG (mm ²)	COLOR (note 5)	MAX. INSUL.	DIMENSIONS in.		
PREFIX	PK					A ±.03	B ±.02	C ±.02
DNF18250F1BX	-C -M	.250 X .032 (6,3 X 0,8)	22-18 (0,5-1,0)	RED	.210 (5,33)	.93 (23,6)	.35 (8,9)	.22 (5,5)
DNF18205F1BX	-C -M	.205/.187 X .032 (5,2/4,8 X 0,8)	22-18 (0,5-1,0)	RED	.210 (5,33)	.87 (22,1)	.31 (7,9)	.22 (5,5)
DNF18206F1BX	-C -M	.205/.187 X .020 (5,2/4,8 X 0,5)	22-18 (0,5-1,0)	RED	.210 (5,33)	.87 (22,1)	.31 (7,9)	.22 (5,5)
DNF14250F1BX	-C -M	.250 X .032 (6,3 X 0,8)	16-14 (1,5-2,5)	BLUE	.240 (6,09)	.93 (23,6)	.35 (8,9)	.22 (5,5)
DNF14205F1BX	-C -M	.205/.187 X .032 (5,2/4,8 X 0,8)	16-14 (1,5-2,5)	BLUE	.240 (6,09)	.87 (22,1)	.31 (7,9)	.22 (5,5)
DNF14206F1BX	-C -M	.205/.187 X .020 (5,2/4,8 X 0,5)	16-14 (1,5-2,5)	BLUE	.240 (6,09)	.87 (22,1)	.31 (7,9)	.22 (5,5)

A41600_02

02	2/01	EJS		WIRE RANGE FOR PARTS DNF18250F1BX, 205, 206 WAS 0,5-1,5, UPDATED NOTE 1-B				 TINLEY PARK, ILLINOIS FEMALE DISCONNECTS EXPANDED FULLY INSULATED NYLON .250 X .032, .205/.187 X .032/.020
01	1/97	TM	RLS	ADDED (POCKET A) TO TOOL NOTE FILESPEC WAS N41600AA_PCD_00	05471	LA	TJBL	
00	12-96	TM	RLS	RELEASED	05362	LA	DBH	
REV	DATE	BY	CHK	DESCRIPTION	ECN #	CUST	PM	DRAWN BY: TMSA CHK'D: [] SCALE: NONE DRAWING NO.: A41600