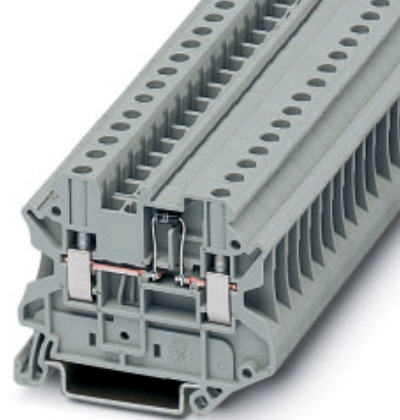


Component Terminal Block

UT 4-MTD-DIO



(IEC) [mm ²]	rigid solid	flexible stranded	AWG	I [A]	U [V]
IEC 60 947-7-1	0,14-6	0,14-4	26-10	1)	800

1) The maximum current is determined by the diode

Integrated: Diode 1 N 4007
Reverse Voltage: 1300 V
Maximum continuous current: 0,5 A



Technical data

Terminal block, with integrated diode, conducting from left to right, with female test connector screws

gray terminal width 6.2

Terminal block, with integrated diode, conducting from right to left, with female test connector screws

gray terminal width 6.2

End cover

gray



Plug-in bridge, for cross-connections in the terminal center

2-pos.
3-pos.
4-pos.
5-pos.
10-pos.
20-pos.



Adapter bridge, for connecting an UT 10 to UT 4 or UT 2,5



Test adapter, for 4-mm-Ø-test connectors PS and 4-mm-Ø-safty test connectors, making contact in the bridge shaft



2.3-Ø-mm test connector, consisting of a metal part and a red insulating sleeve



Modular test plug, see CLIPLINE catalog



Screwdriver,



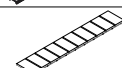
Zack strip, flat, for labeling in the center and outer marker grooves

white



Zack strip, 10-section, for labeling the marker grooves

white



Dimensions

Width / length / end cover width	[mm]	6.2 / 56.8 / 2.2
Height (NS 35/7.5 / NS 35/15)	[mm]	47.5 / 55.0

Technical data in accordance with IEC/ DIN VDE

Maximum load current / cross section	[A] / [mm ²]	1) / 6
Rated surge voltage / contamination class	[kV] / -	8 / 3
Surge voltage category / insulation material group	- / -	III / I

Connection capacity

Stranded with ferrule with plastic sleeve	[mm ²]	0.25 - 4
Stranded with ferrule without plastic sleeve	[mm ²]	0.25 - 4

Multi-conductor connection (2 cond. with same cross section)

Solid / Stranded	[mm ²]	0.14 - 1.5 / 0.14 - 1.5
Stranded with ferrule without plastic sleeve	[mm ²]	0.25 - 1.5
Stranded with TWIN ferrule with plastic sleeve	[mm ²]	0.5 - 2.5

Stripping length [mm]

9

Internal cylindrical gauge (IEC 60 947-1)

A4

Thread

M 3

Torque [Nm]

0.6 - 0.8

Insulating material

PA

Inflammability class in acc. with UL 94

V0

Approval data (UL and CSA/CUL)

Nom voltage / nom current / conduc. sizes	UL: [V] / [A] / AWG	600 / 1 / 26-10
	CSA/CUL: [V] / [A] / AWG	600 / 1 / 26-10

Type	Order No.	Pcs. Pkt.
UT 4-MTD-DIO/L-R	30 46 21 0	50
UT 4-MTD-DIO/L-R P/P	30 46 34 6	50
UT 4-MTD-DIO/R-L	30 46 23 6	50
UT 4-MTD-DIO/R-L P/P	30 46 35 9	50
D-UT 2,5/4-TWIN	30 47 14 1	50
FBS 2-6	30 30 33 6	50
FBS 3-6	30 30 24 2	50
FBS 4-6	30 30 25 5	50
FBS 5-6	30 30 34 9	50
FBS 10-6	30 30 27 1	10
FBS 20-6	30 30 36 5	10
RB UT 10-(2,5/4)	30 47 06 0	50
PAI 4	30 30 92 5	10
MPS-IH RD	02 01 67 6	10
PS-6	30 30 99 6	10
SZS 0,6 x 3,5	12 05 05 3	10
ZBF 6:UNBEDRUCKT	08 08 71 0	10
ZB 6:UNBEDRUCKT	10 51 00 3	10