

## ST-COMBI Pluggable Spring Cage Terminal Blocks Knife Disconnect and Disconnect Terminal Block

---

The pluggable spring cage terminal block series, ST-COMBI, has been extended in the field of disconnect terminal blocks.

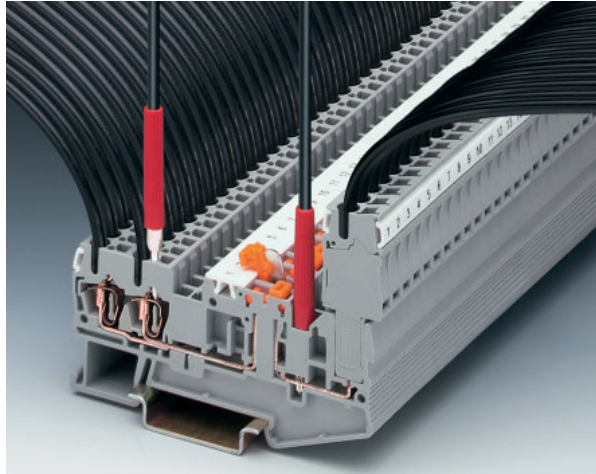
Knife disconnect terminal block ST 2,5-TWIN-MT/1P and disconnect terminal block ST 2,5-TWIN-TG/1P have two spring cage connection facilities on the one side of the disconnect zone, and on the other side, a connection facility for the SP 2,5 plug.

There are test facilities for 2.3 mm<sup>2</sup> test plugs on both sides of the disconnect point.

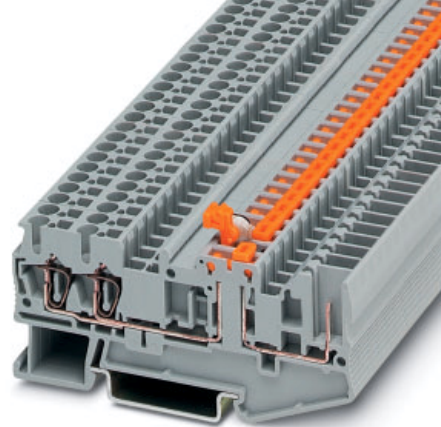
The external dimensions of the terminal blocks match the shape of the ST-COMBI series and it goes without saying that the same accessories are used (labeling, bridges, test plugs). As a particular feature, both terminal blocks have 3 bridge shafts: two in the same position as in the entire ST series and one on the other side of the disconnect point. Whereas in the case of the knife disconnect terminal block the knife is fitted, in the case of the disconnect terminal block, the P-DI disconnect plug can be mounted. If the disconnect point is to remain open, the disconnect plug can be "parked" the other way round in the terminal block.

The P-CO component plug can also be used in the universal disconnect zone of the above-mentioned series.

To make wiring the component as convenient as possible, both spring-cage contact points are opened at the same time by twisting the screwdriver.




# Pluggable Spring Cage Knife Disconnect Terminal Block ST 2,5-TWIN-MT/ 1P



(IEC) [mm <sup>2</sup> ]	rigid solid	flexible stranded	AWG	I [A]	U [V]
IEC 60 947-7-1	0.08-4	0.08-2.5	28-12	16	400

## Technical data

**Spring cage terminal block,**  
for mounting on 

gray Terminal width 5.2

### (1) Cover

gray



(2) **Insulating stop sleeve**, prevents unintentional clamping of the insulation in the case of smaller cross sections  
Cross section range:

0.08-0.2 mm<sup>2</sup>

0.25-0.5 mm<sup>2</sup>

0.75-1 mm<sup>2</sup>

white  
gray  
black



(3) **Plug-in bridge**, for cross bridging in the terminal center

2-pos.

3-pos.

4-pos.

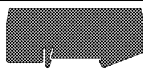
5-pos.

10-pos.

20-pos.



(4) **Partition plate**, for visual and electrical separation of terminal groups, 2 mm thick



(5) **Test adapter**, for 4 mm Ø PS test plug and 4 mm Ø safety test plugs, makes contact in the bridge shaft



(6) **2.3 mm Ø test plug<sup>1)</sup>**, consisting of metal part and red insulating sleeve



(7) **Modular test plug**, labeling with ZBF 5



(8) **Coding star**, with 4 coding pins, for mounting in all base terminal blocks



(9) **Screwdriver**, for actuating the spring cage



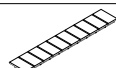
(10) **Zack strip**, flat, for labeling in the outer marker grooves

white



(11) **Zack strip**, 10-section, for labeling in the terminal center

white



## Dimensions

Width / length / end cover width [mm]

Height (NS 35/7.5 / NS 35/15) [mm]

## Technical data in accordance with IEC / DIN VDE

Maximum load current / cross section [A] / [mm<sup>2</sup>]

Rated surge voltage / contamination class [kV] / –

Surge voltage category / insulation material group – / –

## Connection capacity

Stranded with ferrule with plastic sleeve [mm<sup>2</sup>]

Stranded with ferrule without plastic sleeve [mm<sup>2</sup>]

Stranded with TWIN ferrule with plastic sleeve [mm<sup>2</sup>]

Stripping length [mm]

Internal cylindrical gauge (IEC 60 947-1)

Insulation material

Inflammability class acc. to UL 94

Approval data (UL and CSA/CUL)

Nom. voltage / nom. current / conduc. sizes UL: [V] / [A] / AWG

CSA/CUL: [V] / [A] / AWG

<sup>1)</sup> Further colors on request.

<sup>2)</sup> Max. 5 positions. Derating curves for larger numbers of positions on request.

Type	Order No.	Pcs. Pkt.
ST 2,5-TWIN-MT/ 1P	30 40 76 6	50
D-ST 2,5-QUATTRO/ 2P	30 40 08 3	50
ISH 2,5/0,2	30 02 84 3	50
ISH 2,5/0,5	30 02 85 6	50
ISH 2,5/1	30 02 86 9	50
FBS 2-5	I <sub>max</sub> : 24 A	50
FBS 3-5	24 A	50
FBS 4-5	24 A	50
FBS 5-5	24 A	50
FBS 10-5	24 A	10
FBS 20-5	24 A	10
ATP-ST QUATTRO	30 30 81 5	50
PAI 4	30 30 92 5	10
MPS-RD	02 01 55 3	10
PS 5	30 30 98 3	10
PC	30 40 58 8	50
SZF 1 - 0,6 x 3,5	12 04 51 7	10
ZBF 5:UNPRINTED	08 08 64 2	10
ZB 5:UNPRINTED	10 50 00 4	10

5.2 / 81 / 2.2

36.5 / 44

16 / 4 <sup>2)</sup>

6 / 3

III / I

0.25 - 2.5

0.25 - 2.5

0.5

10

A 3

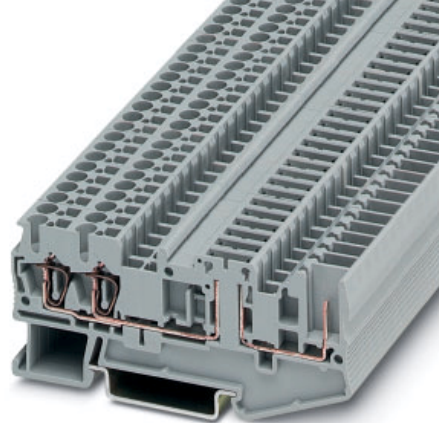
PA

V0

applied for

applied for

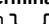


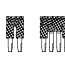
# Pluggable Spring Cage Disconnect Terminal Block ST 2,5-TWIN-TG/ 1P



(IEC) [mm <sup>2</sup> ]	rigid solid	flexible stranded	AWG	I [A]	U [V]
IEC 60 947-7-1	0.08-4	0.08-2.5	28-12	16*	400*

\* Current and voltage are determined by the plug used.

## Technical data

<b>Spring cage terminal block,</b> for mounting on 			gray	Terminal width 5.2
(1) <b>Cover</b>			gray	
(2) <b>Insulating stop sleeve</b> , prevents unintentional clamping of the insulation in the case of smaller cross sections				
Cross section range:		0.08-0.2 mm <sup>2</sup>	white	
		0.25-0.5 mm <sup>2</sup>	gray	
		0.75-1 mm <sup>2</sup>	black	
(3) <b>Plug-in bridge</b> , for cross bridging in the terminal center		2-pos. 3-pos. 4-pos. 5-pos. 10-pos. 20-pos.		
(4) <b>Partition plate</b> , for visual and electrical separation of terminal groups, 2 mm thick				
(5) <b>Test adapter</b> , for 4 mm Ø PS test plug and 4 mm Ø safety test plugs, makes contact in the bridge shaft				
(6) <b>2.3 mm Ø test plug<sup>1)</sup></b> , consisting of metal part and red insulating sleeve				
(7) <b>Modular test plug</b> , labeling with ZBF 5				
(8) <b>Coding star</b> , with 4 coding pins, for mounting in all base terminal blocks				
(9) <b>Disconnect plug</b>				
(10) <b>Component plug</b> , labeling with ZBF 5				
(11) <b>Screwdriver</b> , for actuating the spring cage				
(12) <b>Zack strip</b> , flat, for center and external labeling,			white	
(13) <b>Zack strip</b> , 10-section, for center labeling,			white	

## Dimensions

Width / length / end cover width	[mm]
Height (NS 35/7.5 / NS 35/15)	[mm]

## Technical data in accordance with IEC / DIN VDE

Maximum load current / cross section	[A] / [mm <sup>2</sup> ]
Rated surge voltage / contamination class	[kV] / –
Surge voltage category / insulation material group	– / –

## Connection capacity

Stranded with ferrule with plastic sleeve	[mm <sup>2</sup> ]
Stranded with ferrule without plastic sleeve	[mm <sup>2</sup> ]
Stranded with TWIN ferrule with plastic sleeve	[mm <sup>2</sup> ]
Stripping length	[mm]

## Internal cylindrical gauge (IEC 60 947-1)

## Insulation material

Inflammability class acc. to UL 94

## Approval data (UL and CSA/CUL)

Nom. voltage / nom. current / conduc. sizes	UL: [V] / [A] / AWG
	CSA/CUL: [V] / [A] / AWG

Type	Order No.	Pcs. Pkt.
ST 2,5-TWIN-TG/1P	30 40 84 7	50
D-ST 2,5-QUATTRO/ 2P	30 40 08 3	50
ISH 2,5/0,2	30 02 84 3	50
ISH 2,5/0,5	30 02 85 6	50
ISH 2,5/1	30 02 86 9	50
FBS 2-5	I <sub>max.</sub> : 24 A	30 30 16 1
FBS 3-5	24 A	30 30 17 4
FBS 4-5	24 A	30 30 18 7
FBS 5-5	24 A	30 30 19 0
FBS 10-5	24 A	30 30 21 3
FBS 20-5	24 A	30 30 22 6
ATP-ST QUATTRO	30 30 81 5	50
PAI 4	30 30 92 5	10
MPS-RD	02 01 55 3	10
PS 5	30 30 98 3	10
PC	30 40 58 8	50
P-DI	I <sub>max.</sub> : 16 A	30 36 78 3
P-CO	I <sub>max.</sub> : 6 A <sup>2)</sup>	30 36 79 6
SZF 1 - 0,6 x 3,5	12 04 51 7	10
ZBF 5:UNPRINTED	08 08 64 2	10
ZB 5:UNPRINTED	10 50 00 4	10

5.2 / 81 / 2.2
36.5 / 44
16 / 4
6 / 3
III / I
0.25 - 2.5
0.25 - 2.5
0.5
10
A 3
PA
V0
–
–

<sup>1)</sup> Further colors on request.