

MSTBW 2,5/...-G

Open-end header
with stand-off
Pitch 5.0 or 5.08

	I	U
	[A]	[V]
Connection data	12	250



Description	No. of positions	Dim. a [mm]	Type	Order No.	Pcs. Pkt.
Header, 5.0 mm pitch, color: green	2	5	MSTBW 2,5/2-G	17 36 11 1	50
	3	10	MSTBW 2,5/3-G	17 36 10 8	
	4	15	MSTBW 2,5/4-G	17 36 09 8	
	5	20	MSTBW 2,5/5-G	17 36 08 5	
	6	25	MSTBW 2,5/6-G	17 36 07 2	
	7	30	MSTBW 2,5/7-G	17 36 06 9	
	8	35	MSTBW 2,5/8-G	17 36 05 6	
	9	40	MSTBW 2,5/9-G	17 36 04 3	
	10	45	MSTBW 2,5/10-G	17 36 03 0	
	11	50	MSTBW 2,5/11-G	17 36 02 7	
	12	55	MSTBW 2,5/12-G	17 36 01 4	
	13	60	MSTBW 2,5/13-G	17 36 00 1	
	14	65	MSTBW 2,5/14-G	17 35 99 2	
	15	70	MSTBW 2,5/15-G	17 35 98 9	
	16	75	MSTBW 2,5/16-G	17 35 97 6	
	17	80	MSTBW 2,5/17-G	17 35 96 3	
	18	85	MSTBW 2,5/18-G	17 35 95 0	
	19	90	MSTBW 2,5/19-G	17 35 94 7	
	20	95	MSTBW 2,5/20-G	17 35 93 4	
	21	100	MSTBW 2,5/21-G	17 35 92 1	
	22	105	MSTBW 2,5/22-G	17 35 91 8	
	23	110	MSTBW 2,5/23-G	17 35 90 5	
	24	115	MSTBW 2,5/24-G	17 35 89 5	
	Header, 5.08 mm pitch, color: green	2	5.08	MSTBW 2,5/2-G-5,08	
3		10.16	MSTBW 2,5/3-G-5,08	17 35 87 9	
4		15.24	MSTBW 2,5/4-G-5,08	17 35 86 6	
5		20.32	MSTBW 2,5/5-G-5,08	17 35 85 3	
6		25.40	MSTBW 2,5/6-G-5,08	17 35 84 0	
7		30.48	MSTBW 2,5/7-G-5,08	17 35 83 7	

8	35.56	MSTBW 2,5/8-G-5,08	17 35 82 4
9	40.64	MSTBW 2,5/9-G-5,08	17 35 81 1
10	45.72	MSTBW 2,5/10-G-5,08	17 35 80 8
11	50.80	MSTBW 2,5/11-G-5,08	17 35 79 8
12	55.88	MSTBW 2,5/12-G-5,08	17 35 78 5
13	60.96	MSTBW 2,5/13-G-5,08	17 35 77 2
14	66.04	MSTBW 2,5/14-G-5,08	17 35 76 9
15	71.12	MSTBW 2,5/15-G-5,08	17 35 75 6
16	76.20	MSTBW 2,5/16-G-5,08	17 35 74 3
17	81.28	MSTBW 2,5/17-G-5,08	17 35 73 0
18	86.36	MSTBW 2,5/18-G-5,08	17 35 72 7
19	91.44	MSTBW 2,5/19-G-5,08	17 35 71 4
20	96.52	MSTBW 2,5/20-G-5,08	17 35 70 1
21	101.60	MSTBW 2,5/21-G-5,08	17 35 69 1
22	106.68	MSTBW 2,5/22-G-5,08	17 35 68 8
23	111.76	MSTBW 2,5/23-G-5,08	17 35 67 5
24	116.84	MSTBW 2,5/24-G-5,08	17 35 66 2

Technical data**Dimensions**

see description

Pitch	[mm]	5.0 / 5.08
Pin dimensions	[mm] x [mm]	1x1
Hole diameter	[mm]	1.4

Technical data in accordance with IEC / DIN VDE

Insulation material group	–	IIIa
Surge voltage category / contamination class	–/– III / 3	III / 2 II / 2
Rated voltage	[V] 320	320 400
Rated surge voltage	[kV] 4	4 4
Nominal current	[A]	12
Maximum load current per position	[A]	12

Insulation material

PA

Inflammability class acc. to UL 94

V2

Temperature indices RTI/Ti

125/100

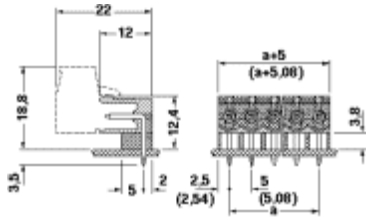
Approval data (UL and CSA)

Nominal voltage / current / conductor sizes	UL: [V] / [A] / AWG	300 / 10 / –
	CSA: [V] / [A] / AWG	300 / 10 / –

Articles printed in bold can be delivered at short notice.**Products with black or gray housing available on request.****Note:**

Only actuate COMBICON plug connectors when under no load condition. If for operating reasons small loads must be switched, experimental values are available on request.

Dimensional drawing



Drilling diagram

