

Sensor/Actuator Cable with M 12 Plug on M 12 Sockets, 4-Position

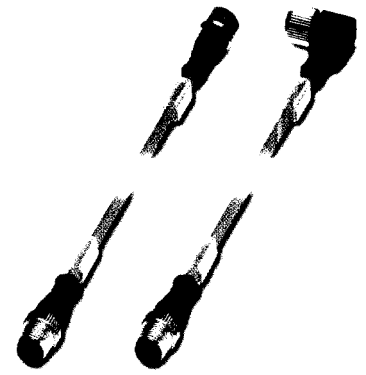
For applications in which the sensors have a PDT contact and therefore need 4 wires, appropriate connecting cables of 0.3 m to 3 m can be supplied.

The M 12 plug connectors can be supplied straight, angled and with optional indicator elements (LEDs).

The gray cable sheath (RAL 7001) is made of highly resilient polyurethane (PUR). The fine-strand conductors (42 x 0.1 mm) make flexible cable laying possible.

The cables have PATG 3 marker carriers and can be labeled with our cable marking system PABA (see page 101).

The SAC cables can also be supplied with a high-grade steel hexagon nut (V4A or V2A) on request.



SAC-4P-M12MS/.../M12...

Sensor/actuator cable

Note:
Articles printed in bold are available at short notice.

Description	Number of positions	Cable length [m]	Type	Order No.	Pcs. Pkt.
Sensor/actuator cable, straight M 12 plug on straight M 12 socket	4	0.3	SAC-4P-M12MS/0,3-PUR/M12FS	16 68 35 7	5
		0.6	SAC-4P-M12MS/0,6-PUR/M12FS	16 68 36 0	
		1.5	SAC-4P-M12MS/1,5-PUR/M12FS	16 68 37 3	
		3.0	SAC-4P-M12MS/3,0-PUR/M12FS	16 68 38 6	
Sensor/actuator cable, straight M 12 plug on angled M 12 socket	4	0.3	SAC-4P-M12MS/0,3-PUR/M12FR	16 68 47 0	5
		0.6	SAC-4P-M12MS/0,6-PUR/M12FR	16 68 48 3	
		1.5	SAC-4P-M12MS/1,5-PUR/M12FR	16 68 49 6	
		3.0	SAC-4P-M12MS/3,0-PUR/M12FR	16 68 50 6	
Sensor/actuator cable, straight M 12 plug on angled M 12 socket, 3 LEDs	4	0.3			
		0.6			
		1.5			
		3.0			
Sensor/actuator cable, angled M 12 plug on straight M 12 socket	4	0.3			
		0.6			
		1.5			
		3.0			
Sensor/actuator cable, angled M 12 plug on angled M 12 socket	4	0.3			
		0.6			
		1.5			
		3.0			
Sensor/actuator cable, angled M 12 plug on angled M 12 socket, 3 LEDs	4	0.3			
		0.6			
		1.5			
		3.0			

Technical data

Nominal current	[A]	4
Nominal voltage in acc. with DIN VDE 0110 (III/3)	[V AC / V DC]	250 / 300
Contact resistance	[mΩ]	≤ 5
Ambient temp. cable: rigid / flexible installation	[°C]	-30 to +80 / -5 to +70
plug/socket	[°C]	-25 to +90
Number of positions		4
Core cross section	[mm ²]	0.34 (42 x 0.1 mm)
Cable cross section	[mm]	5.2
Contact // contact surface		CuZnPb // Ni / Au
Insulation material / handle		PBT, hardly inflammable, self-extinguishing / TPE
Prot. type, plugged (IEC 60 529 / EN 60 529 / DIN VDE 0470-1)		IP 67

M 12 plug

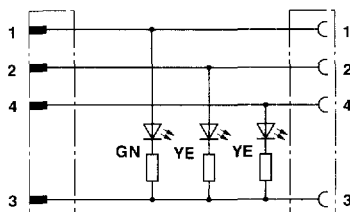
M 12 socket



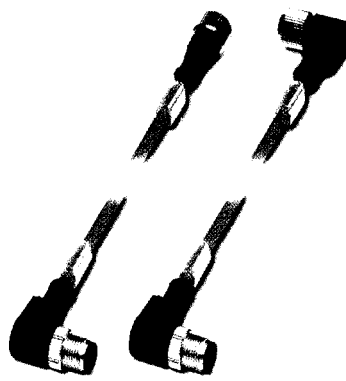
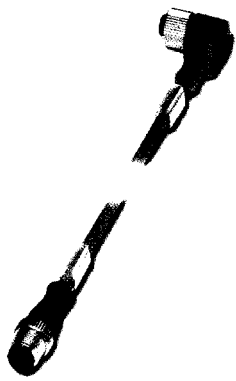
4-pos.

4-pos.

Pin assignment



Contact assignment of M 12 plugs / sockets



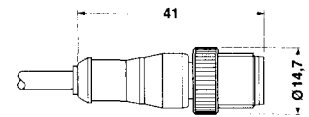
SAC-4P-M12MS/.../M12FR-3L

Sensor/actuator cable with 3 LEDs

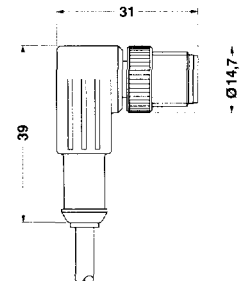
SAC-4P-M12MR/.../M12...

Sensor/actuator cable

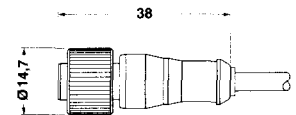
Type	Order No.	Pcs. Pkt.	Type	Order No.	Pcs. Pkt.
SAC-4P-M12MS/0,3-PUR/M12FR-3L	16 68 51 9	5	SAC-4P-M12MR/0,3-PUR/M12FS	16 68 59 3	5
SAC-4P-M12MS/0,6-PUR/M12FR-3L	16 68 52 2		SAC-4P-M12MR/0,6-PUR/M12FS	16 68 60 3	
SAC-4P-M12MS/1,5-PUR/M12FR-3L	16 68 53 5		SAC-4P-M12MR/1,5-PUR/M12FS	16 68 61 6	
SAC-4P-M12MS/3,0-PUR/M12FR-3L	16 68 54 8		SAC-4P-M12MR/3,0-PUR/M12FS	16 68 62 9	
			SAC-4P-M12MR/0,3-PUR/M12FR	16 68 71 3	5
			SAC-4P-M12MR/0,6-PUR/M12FR	16 68 72 6	
			SAC-4P-M12MR/1,5-PUR/M12FR	16 68 73 9	
			SAC-4P-M12MR/3,0-PUR/M12FR	16 68 74 2	
			SAC-4P-M12MR/0,3-PUR/M12FR-3L	16 68 75 5	5
			SAC-4P-M12MR/0,6-PUR/M12FR-3L	16 68 76 8	
			SAC-4P-M12MR/1,5-PUR/M12FR-3L	16 68 77 1	
			SAC-4P-M12MR/3,0-PUR/M12FR-3L	16 68 78 4	
4			4		
- / 24			250 / 300 (LED: - / 24)		
≤ 5			≤ 5		
-30 to +80 / -5 to +70			-30 to +80 / -5 to +70		
-25 to +90			-25 to +90		
4			4		
0.34 (42 x 0.1 mm)			0.34 (42 x 0.1 mm)		
5.2			5.2		
CuZnPb // Ni / Au			CuZnPb // Ni / Au		
PBT, hardly inflammable, self-extinguishing / TPE (LED: PUR)			PBT, hardly inflammable, self-extinguishing / TPE		
IP 67			IP 67		



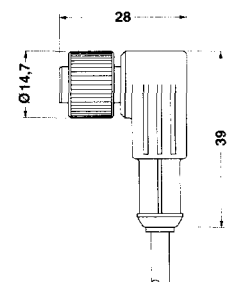
M 12 x 1 plug, straight version



M 12 x 1 plug, angled version



M 12 x 1 socket, straight version



M 12 x 1 socket, angled version