

FEATURES AND SPECIFICATIONS

Features and Benefits

- Guide pin provides ± 1.67 mm (.065") of capture
- Coding key provides 8 possible coding positions
- 8.00 mm (.315") wide module requires little space
- Guidance module attached to stiffener for robustness
- Stiffener assures accurate contact true position and connector straightness

Reference Information

Product Specification: PS-74031-999

Packaging: Delivered as part of complete connector assembly

UL File No.: Pending

CSA File No.: Pending

Mates With: [74061](#), [74062](#)

Designed In: Millimeters

Physical

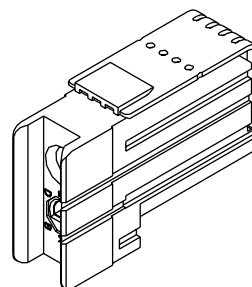
Housing: Liquid crystal polymer, UL 94V-0

Operating Temperature: -55 to +105°C

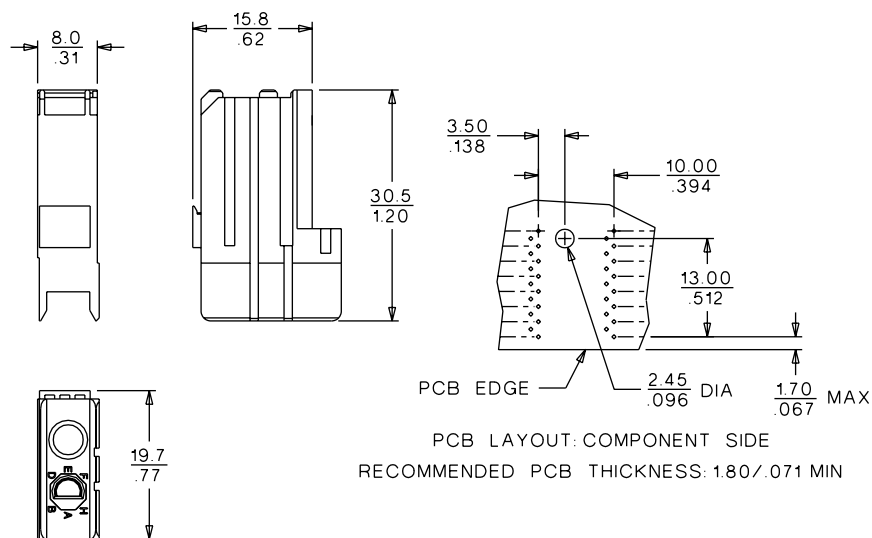


**2.00mm (.079") Pitch
VHDM*
Board-to-Board
Daughtercard Guidance
8 Row Module**

74037



CATALOG DRAWING (FOR REFERENCE ONLY)



ORDERING INFORMATION

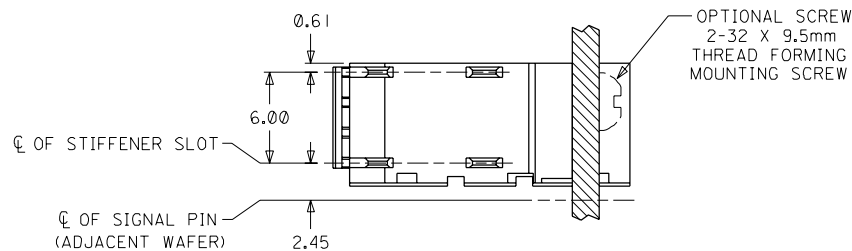
Code	8 Row
None	74037-0008
A	74037-8001
B	74037-8002
C	74037-8003
D	74037-8004
E	74037-8005
F	74037-8006
G	74037-8007
H	74037-8008

Note: The guidance module is always combined with signal wafers and a power module to create an 8 row daughtercard assembly 74040-XXXX. They are not ordered separately.

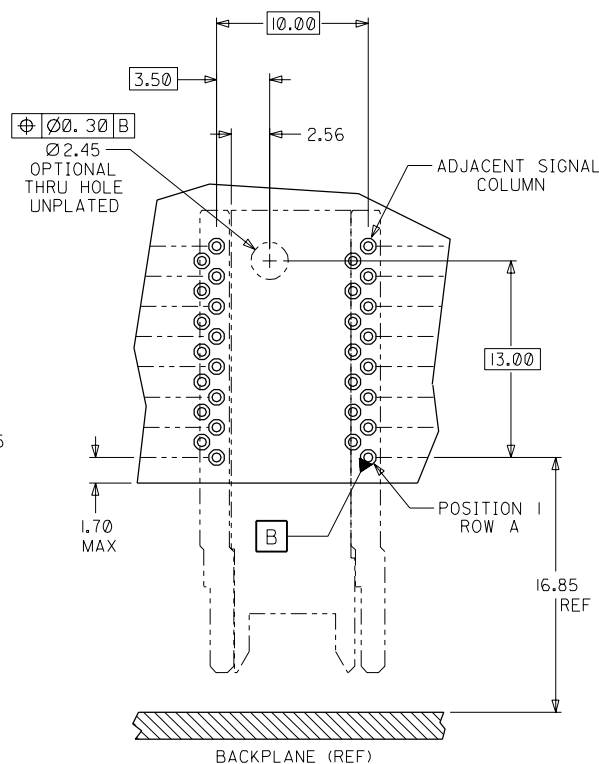
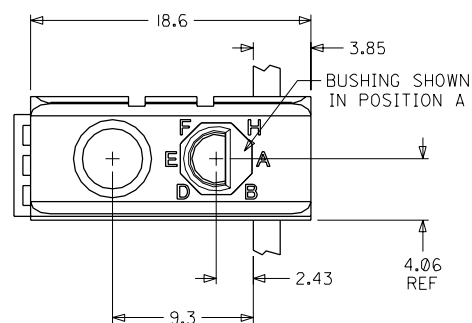
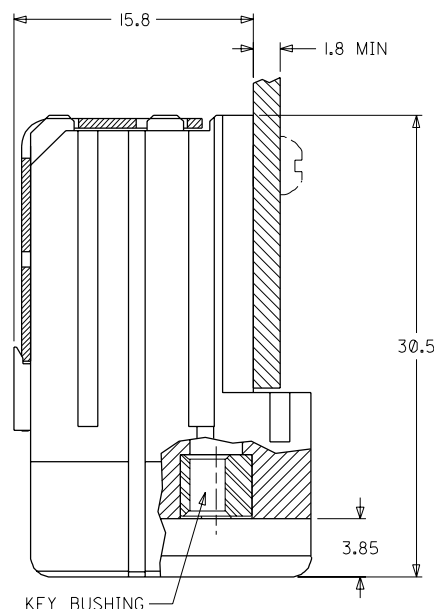
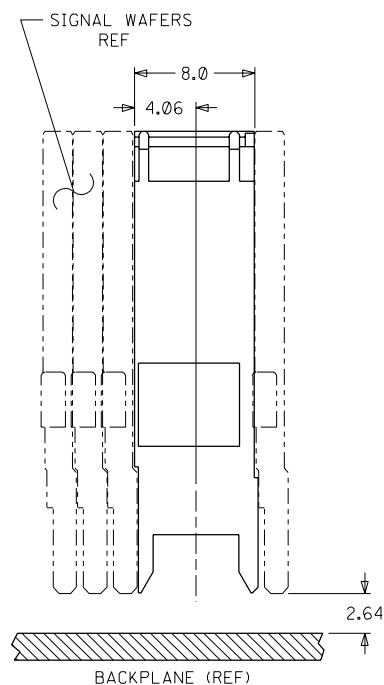
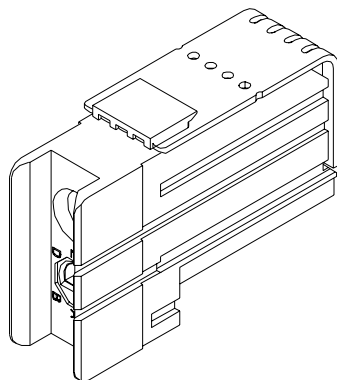
* Very High Density Metric and VHDM are trademarks of Teradyne, Inc.

NOTES: (UNLESS OTHERWISE SPECIFIED)

1. MATERIALS: HOUSING - LIQUID CRYSTAL POLYMER (LCP),
GLASS-FILLED, UL94V-0, BLACK.
KEY BUSHING - STAINLESS STEEL.
2. FINISH: NONE.
3. REFER TO MOLEX PRODUCT SPECIFICATION PS-74031-999
FOR PERFORMANCE SPECIFICATIONS.



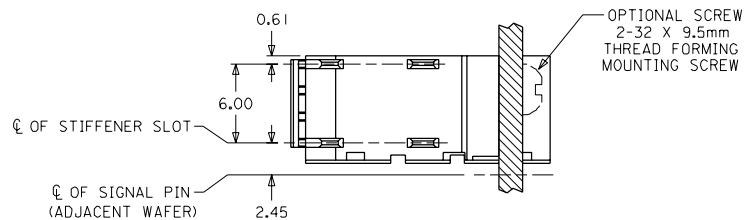
MATERIAL NUMBER	BUSHING CLOCK POSITION	
74037-0008	NONE	
74037-8001	A	
74037-8002	B	
74037-8003	C	
74037-8004	D	
74037-8005	E	
74037-8006	F	
74037-8007	G	
74037-8008	H	

DAUGHTERCARD HOLE PATTERN
(CONNECTOR SIDE)

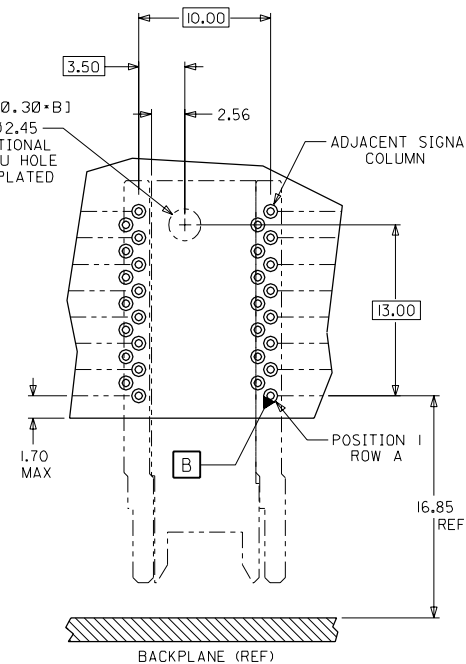
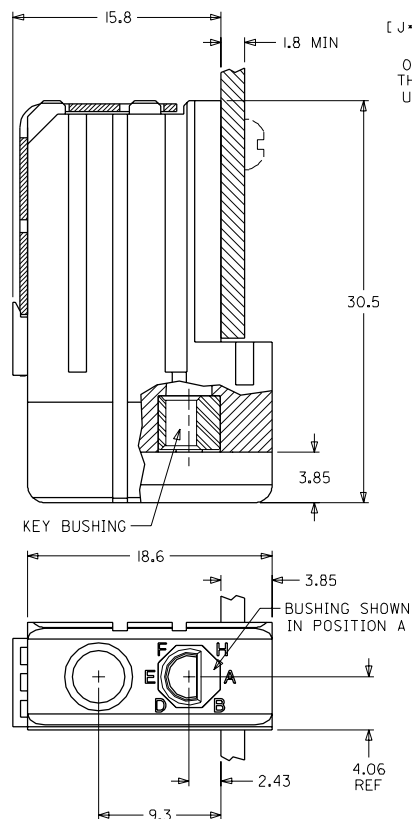
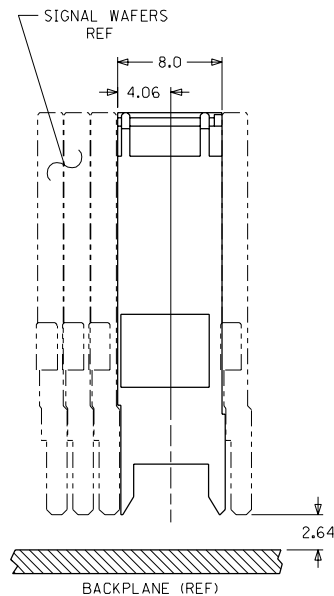
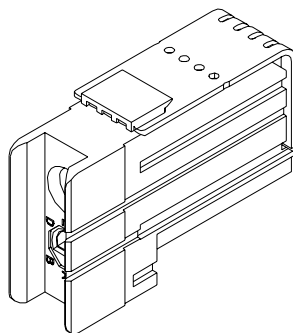
INITIAL RELEASE EC NO. UDT 1999-0291 DRWN: LAURX 98/10/19 CHK: MQWANG 98/10/19 APPR: BIXLER 98/10/19	DESCRIPTION MAJOR CRITICAL	QUALITY SYMBOLS <div>MAJOR CRITICAL</div>	GENERAL TOLERANCES: (UNLESS SPECIFIED)		SCALE 4 : 1	DESIGN UNITS <input checked="" type="checkbox"/> mm <input type="checkbox"/> INCH	<div>THIRD ANGLE PROJECTION</div>	DIMENSIONS: <input type="checkbox"/> mm <input type="checkbox"/> INCH <input checked="" type="checkbox"/> mm ONLY		SHT	REV
			mm	INCH	DRAWN BY & DATE LAURX 98/10/19			REVISE ON CAD ONLY			
			4 PLACES ±0. --	±. --	CHECKED BY & DATE MQWANG 98/10/19			TITLE: VHDM DAUGHTERCARD 8 ROW GUIDE MODULE SALES DRAWING			
			3 PLACES ±0. --	±. --	APPROVED BY & DATE BIXLER 98/10/19						
			2 PLACES ±0.13	±. --	MOLEX MOLEX INCORPORATED						
1 PLACE ±0.25	±. --	CAD FILENAME S7403706.DGN		MATERIAL NO. SEE CHART	DRAWING NO. SD-74037-0006	SHEET NO. 1 OF 1					
A	REV		ANGULAR: ± 2 °		THIS DRAWING CONTAINS INFORMATION THAT IS PROPRIETARY TO MOLEX INCORPORATED AND SHOULD NOT BE USED WITHOUT WRITTEN PERMISSION.		SIZE C				
			DRAFT WHERE APPLICABLE MUST REMAIN WITHIN DIMENSIONS								

NOTES: (UNLESS OTHERWISE SPECIFIED)

1. MATERIALS: HOUSING - LIQUID CRYSTAL POLYMER (LCP),
GLASS-FILLED, UL94V-0, BLACK.
KEY BUSHING - STAINLESS STEEL.
2. FINISH: NONE.
3. REFER TO MOLEX PRODUCT SPECIFICATION PS-74031-999
FOR PERFORMANCE SPECIFICATIONS.



MATERIAL NUMBER	BUSHING CLOCK POSITION
74037-0008	NONE
74037-8001	A
74037-8002	B
74037-8003	C
74037-8004	D
74037-8005	E
74037-8006	F
74037-8007	G
74037-8008	H

DAUGHTERCARD HOLE PATTERN
(CONNECTOR SIDE)

INITIAL RELEASE EC NO. UDT 1999-0291 DRWN: LAURX 98/10/19 CHK: MOWANG 98/10/19 APPR: BIXLER 98/10/19	QUALITY SYMBOLS MAJOR CRITICAL C	GENERAL TOLERANCES: (UNLESS SPECIFIED)		SCALE 4 : 1	DESIGN UNITS mm	THIRD ANGLE PROJECTION	DIMENSIONS: mm		SHT	REV
		4 PLACES	±0. --	±. --			mm	INCH	mm	INCH
		3 PLACES	±0. --	±. --			mm	INCH	mm	INCH
		2 PLACES	±0.13	±. --			mm	INCH	mm	INCH
A	REV	1 PLACE	±0.25	±. --			mm	INCH	mm	INCH
		ANGULAR: ± 2 °		DRAFT WHERE APPLICABLE MUST REMAIN WITHIN DIMENSIONS		THIS DRAWING CONTAINS INFORMATION THAT IS PROPRIETARY TO MOLEX INCORPORATED AND SHOULD NOT BE USED WITHOUT WRITTEN PERMISSION.		SHEET NO. 1 OF 1		SIZE C
		CAD FILENAME S7403706.DGN		MATERIAL NO. SEE CHART		DRAWING NO. SD-74037-006				
		TITLE: VHDM DAUGHTERCARD 8 ROW GUIDE MODULE SALES DRAWING		DRAWN BY & DATE LAURX 98/10/19		CHECKED BY & DATE MOWANG 98/10/19		APPROVED BY & DATE BIXLER 98/10/19		