

## FEATURES AND SPECIFICATIONS

### Features and Benefits

- Sizes 2 to 6 circuits
- Polarization through varied center spacing between circuits 1 and 2

### Reference Information

Packaging: Bag  
 UL File No.: E29179  
 CSA File No.: LR19980  
 Mates With: 5199-N housings  
 Designed In: Millimeters

### Electrical

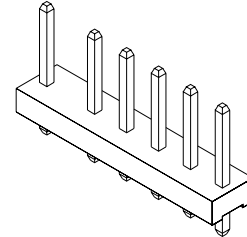
Voltage: 250V  
 Current: 7.0A  
 Contact Resistance: 10mΩ max.  
 Dielectric Withstanding Voltage: 1500V AC/1 min.  
 Insulation Resistance: 1000 MΩ min.

### Physical

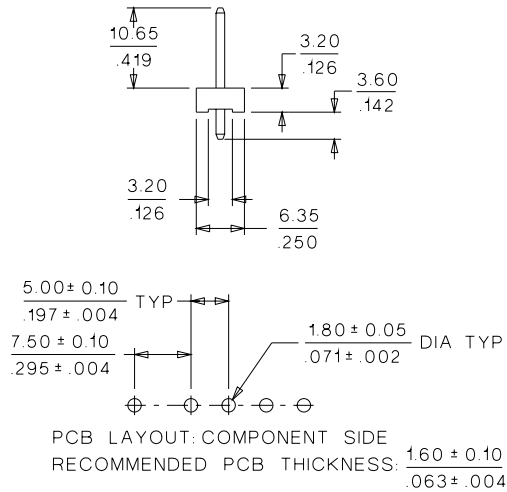
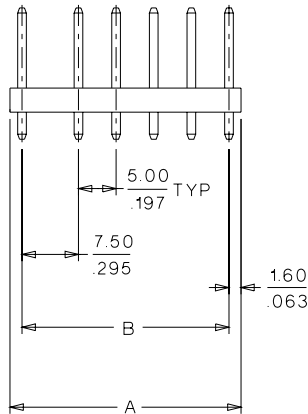
Housing: 6/6 nylon, UL 94V-2  
 Contact: Brass, 1.14mm (.045") square  
 Plating: Tin  
 Operating Temperature: -40 to +105°C

**molex**® 5.00mm (.197") Pitch  
**SPOX™**  
**Header**

**5287-NA**  
**Vertical**



## CATALOG DRAWING (FOR REFERENCE ONLY)



## ORDERING INFORMATION AND DIMENSIONS

Circuits	Order No.	Dimension	
		A	B
2	10-63-3023	10.70 (.421)	7.50 (.295)
3	10-63-3033	15.70 (.618)	12.50 (.492)
4	10-63-3043	20.70 (.815)	17.50 (.689)
5	10-63-3053	25.70 (1.012)	22.50 (.886)
6	10-63-3063	30.70 (1.209)	27.50 (1.083)

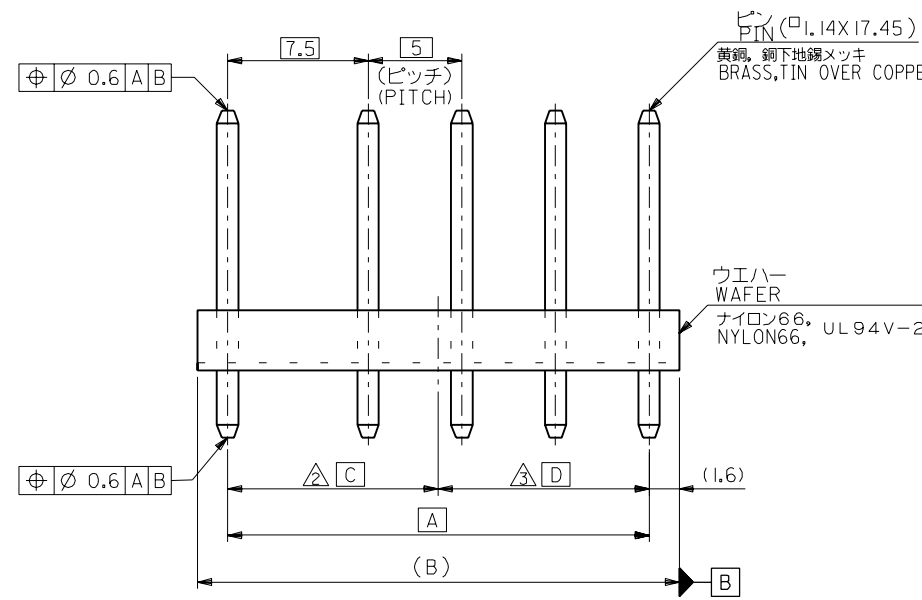
**D**  
**3.00 to 7.92mm (.118 to .312") Pitch**

E

D

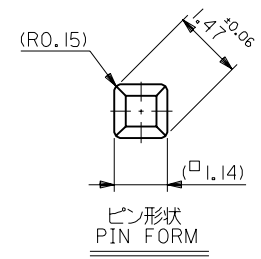
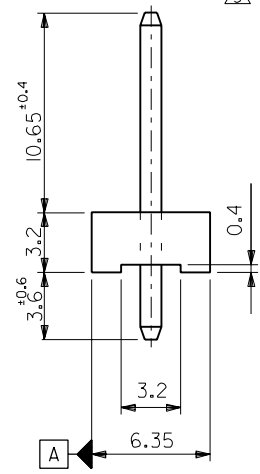
DIMENSIONS IN METRIC DO NOT SCALE DRAWING

A

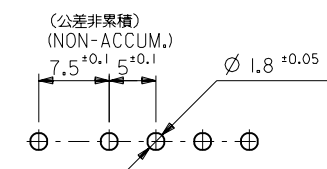


注記  
NOTE

- 1 ウエハーの反りは、長さ 25.4 に対して 0.2 最大。  
CAMBER MUST BE 0.24 MAX.PER 25.4.
- △2 ウエハーセンターから 1 番ピンを示す。  
INDICATES CKT 1 FROM WAFER CENTER.
- △3 ウエハーセンターから N 番ピンを示す。  
INDICATES CKT N FROM WAFER CENTER.



⊕ ∅ 0.6 A B



基板取付穴推奨寸法  
RECOMMENDED P.C.B.HOLE DIMENSION

13.75	13.75	30.7	27.5	10-63-3063	5287-6A	6
11.25	11.25	25.7	22.5	↑ -3053	↑ -5A	5
8.75	8.75	20.7	17.5	↑ -3043	↑ -4A	4
6.25	6.25	15.7	12.5	↓ -3033	↓ -3A	3
3.75	3.75	10.7	7.5	10-63-3023	5287-2A	2
△3 D	△2 C	B	A	EDP NO.	ENG. NO.	極致 CKT.

材料 MATERIAL		☒ 中参照 SEE DRAWING	
仕上げ FINISH		— — —	
適用電線範囲 WIRE RANGE		— — —	
被覆外径 INS. RANGE		— — —	
DRAWN BY '94/10/11 T.ASAKAWA	CHK'D BY '94/10/17 Y.M.HIRAMOTO	SCALE — — —	
APP'D BY '94/10/17 M.FUKUSHIMA	DR. DATE		

角度 ANGLE	±3°
30 以上 OVER	+0.3
10 以上 30 未満 OVER	+0.25
10 未満 UNDER	+0.2

**molex** MOLEX-JAPAN CO.,LTD.  
日本モレックス株式会社

REVISE ONLY ON CAD SYSTEM

TITLE 名称  
KK 5/7.5  
WAFER ASS'Y

DWG. NO. SD-5287-NA  
REV A