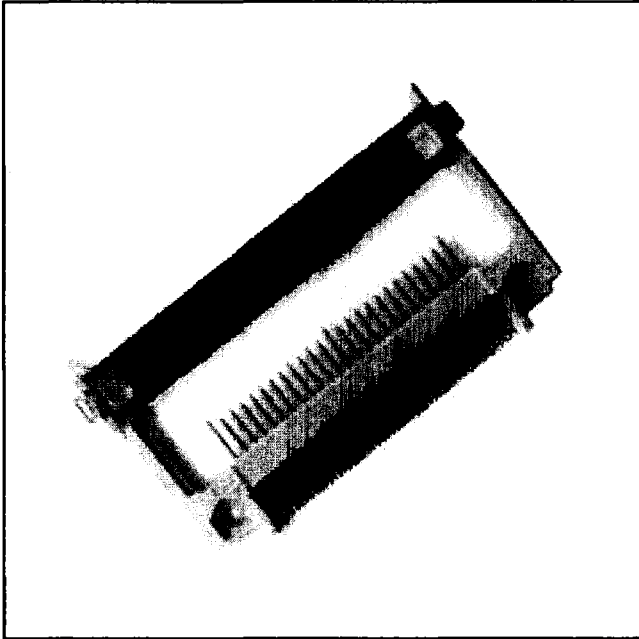


# .050" × .050" CF Card Low Profile Header

Surface Mount, Long Guides



- Low profile — 4.0 mm height
- Board component clearance — 0.0 mm standoff
- Cost savings — eliminates need for molded guide rails in equipment
- Single row solder tails — 0.635 mm spacing
- Meets CFA standards — known reliability

Date Issued: May 11, 1999

TS-0765-04  
Sheet 1 of 3

5

---

## Physical

### Insulation

Material: Liquid Crystal Polyester (LCP)  
Flammability: UL 94V-0  
Color: Beige

### Contact

Material: Copper Alloy  
Plating  
Underplate: 100  $\mu$ " [ 2.54  $\mu$ m ] Nickel — QQ-N-290, Class 2  
Wiping Area: Gold Flash over 80/20 Palladium Nickel  
Solder Tails: 50  $\mu$ " [ 1.27  $\mu$ m ] 85/15 Tin Lead — MIL-P-81728

---

## Electrical

**Current Rating:** .5 A  
**Insulation Resistance:**  $>1 \times 10^9 \Omega$  at 500 Vdc  
 $>1 \times 10^8 \Omega$  at 500 Vdc after Environmental Conditioning  
**Withstanding Voltage:** 500 Vrms at Sea Level

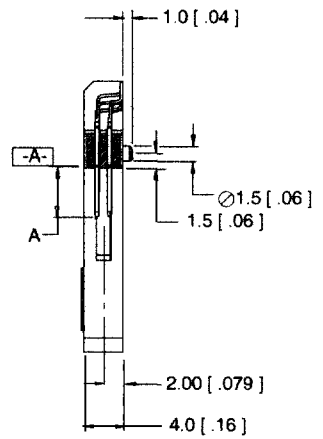
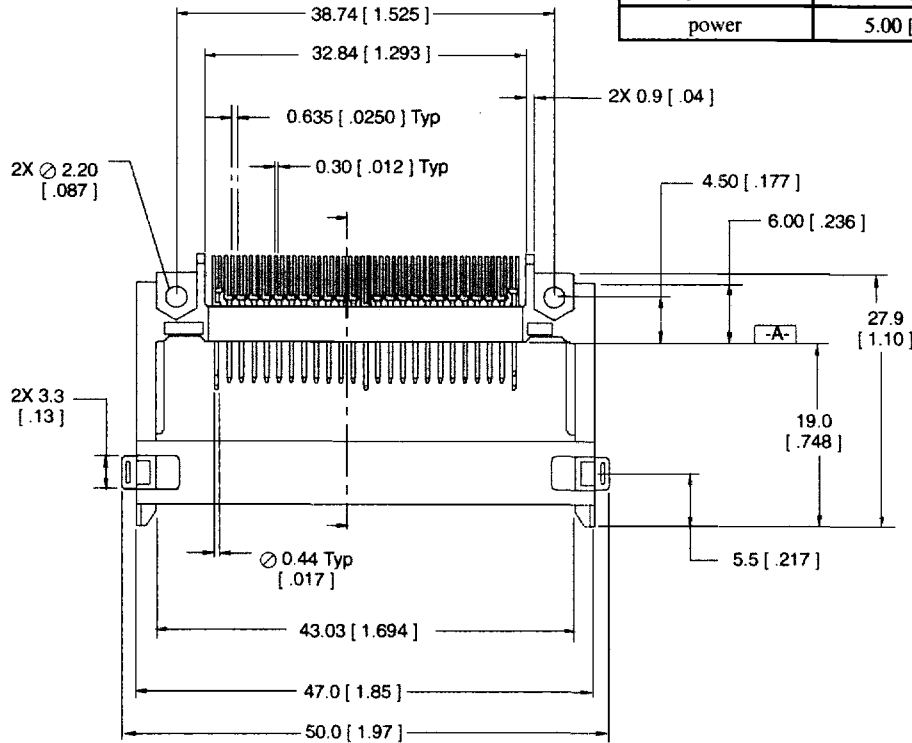
---

## Environmental

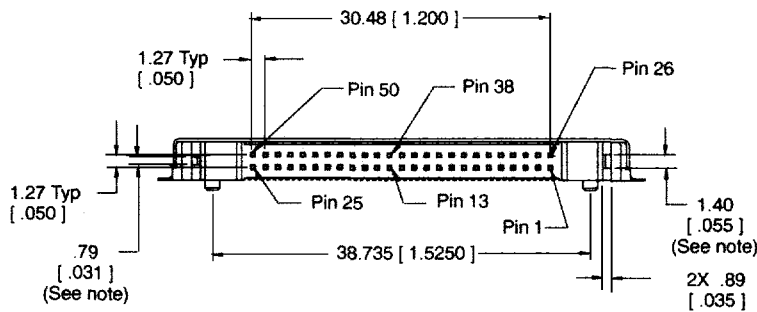
**Temperature Rating:**  $-55^\circ\text{C}$  to  $+85^\circ\text{C}$   
**Process Rating:** Maximum  $235^\circ\text{C}$ , with 90 seconds over  $215^\circ\text{C}$

# .050" × .050" CF Card Low Profile Header Surface Mount, Long Guides

Pin Type	Interface Dim A	Pin No.
detect	3.50 [ .138 ]	25, 26
general	4.25 [ .167 ]	all other pins
power	5.00 [ .197 ]	1, 13, 38 & 50



Section A-A



mm [Inch]			
Tolerance Unless Noted			
	.0	.00	.000
mm	±.3	±.13	

[ ] Dimensions for Reference only

## Ordering Information

**N7E50-X516XX-30**

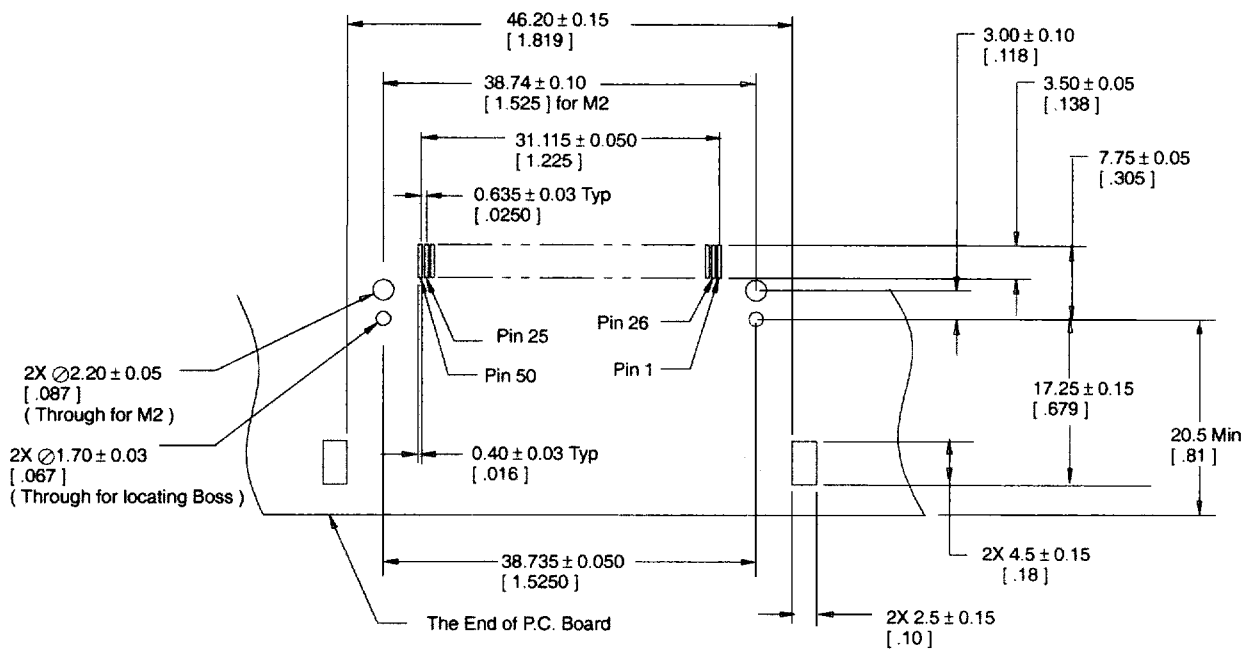
Options: CF Card Polarization / Solder Tabs / Ejector:  
F = Inverse / with solder tab / ejector not acceptable

Options: Plating  
VY = Au Flash over 20 $\mu$ " [ 0.50 $\mu$ m ] PdNi  
VU = Au Flash over 25 $\mu$ " [ 0.64 $\mu$ m ] PdNi

TS-0765-04  
Sheet 2 of 3

# .050" × .050" CF Card Low Profile Header

Surface Mount, Long Guides



The Direction of Inserting Card

Recommended PCB Solder Pad Pattern

TS-0765-04  
Sheet 3 of 3