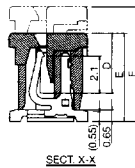
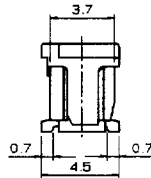
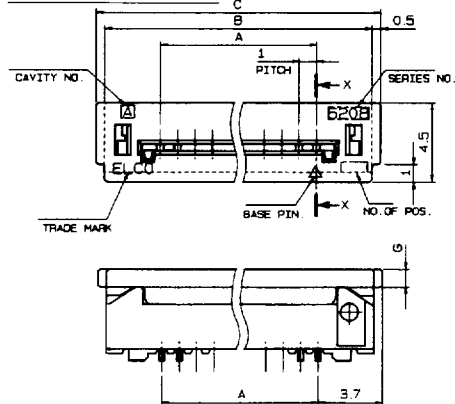


# 1.00mm Pitch

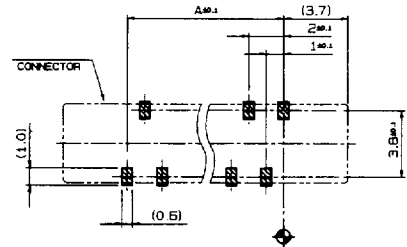
## Series 6208



### WITHOUT BOSS

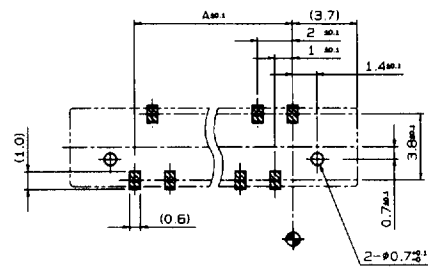
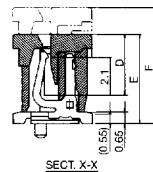
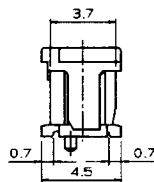
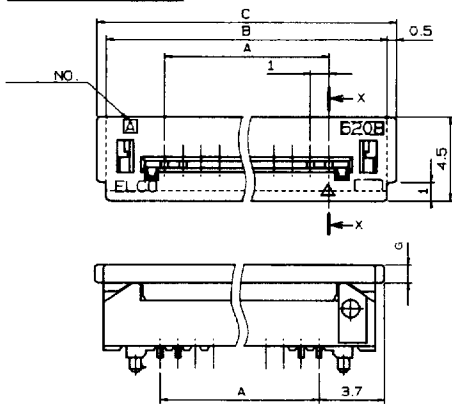


### ZIF Straight SMT

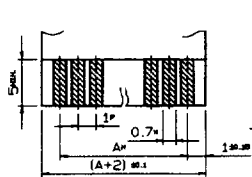


MOUNTING LAYOUT

### WITH BOSS



MOUNTING LAYOUT



	FFC	FPC
P	±0.05	±0.02
W	±0.03	+0.07 -0.05
M	±0.1	±0.05

### FFC, FPC SPECIFICATION

#### ORDERING CODE

XX 6208 XXX 0XX XXX

00=TRAY  
08=TUBE  
PACKAGE

FLEX TYPE  
000=STANDARD  
009=CARBON PASTE

#### VARIATION CODE

500=SMT WITHOUT BOSS  
520=SMT WITH BOSS (2 Places)

NUMBER OF CONTACTS (05-30)

PART NUMBER	NO. OF CONTACTS	A	B	C	D	E	F	G	QTY. PER TUBE	QTY. PER TRAY
XX 6208 XXX 005 XXX	5	4.0	10.4	11.4	3.4	5.0	6.5	0.8	42	310
006	6	5.0	11.4	12.4	↑	↑	↑	↑	38	290
007	7	6.0	12.4	13.4	↑	↑	↑	↑	35	260
008	8	7.0	13.4	14.4	↑	↑	↑	↑	33	250
009	9	8.0	14.4	15.4	↑	↑	↑	↑	31	230
010	10	9.0	15.4	16.4	↑	↑	↑	↑	29	220
011	11	10.0	16.4	17.4	↑	↑	↑	↑	27	200
012	12	11.0	17.4	18.4	↑	↑	↑	↑	26	190
013	13	12.0	18.4	19.4	↑	↑	↑	↑	24	180
014	14	13.0	19.4	20.4	↑	↑	↑	↑	23	170
015	15	14.0	20.4	21.4	↑	↑	↑	↑	22	160
016	16	15.0	21.4	22.4	↑	↑	↑	↑	21	150
017	17	16.0	22.4	23.4	↑	↑	↑	↑	20	150
018	18	17.0	23.4	24.4	↓	↓	↓	↓	19	140
019	19	18.0	24.4	25.4	↓	↓	↓	↓	18	140
020	20	19.0	25.4	26.4	3.4	5.0	6.5	0.8	18	130
021	21	20.0	26.4	27.4	3.6	5.2	6.7	1.0	17	130
022	22	21.0	27.4	28.4	↑	↑	↑	↑	16	120
023	23	22.0	28.4	29.4	↑	↑	↑	↑	16	120
024	24	23.0	29.4	30.4	↓	↓	↓	↓	15	110
025	25	24.0	30.4	31.4	3.6	5.2	6.7	1.0	15	110
026	26	25.0	31.4	32.4	3.9	5.5	7.0	1.3	-	110
028	28	27.0	33.4	34.4	3.9	5.5	7.0	1.3	-	100
030	30	29.0	35.4	36.4	3.9	5.5	7.0	1.3	-	100
XX 6208 XXX 030 XXX	30	29.0	35.4	36.4	3.9	5.5	7.0	1.3	-	90

\*NOTE: Elco Standard for the 500 variation is Tape and Reel. See page 37 for ordering information.

(Dimensions: mm)