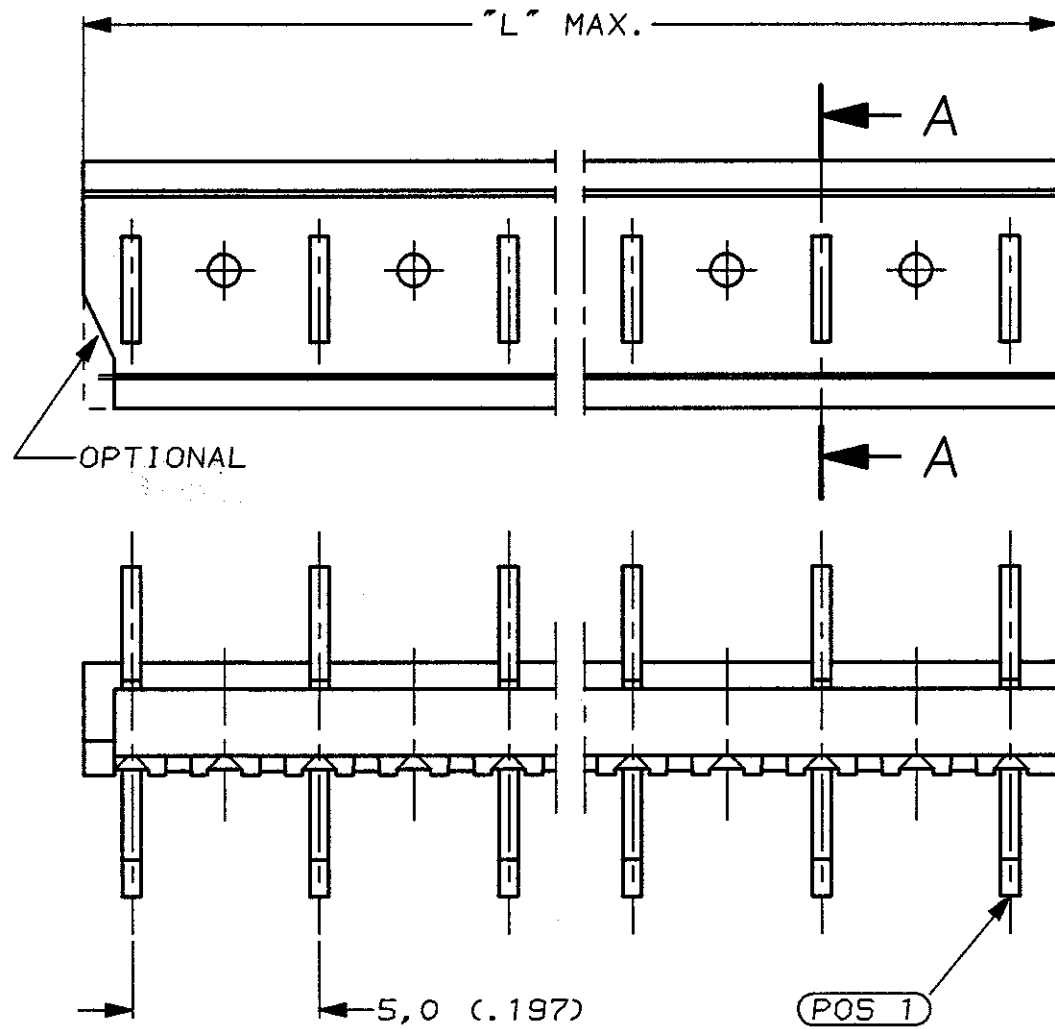


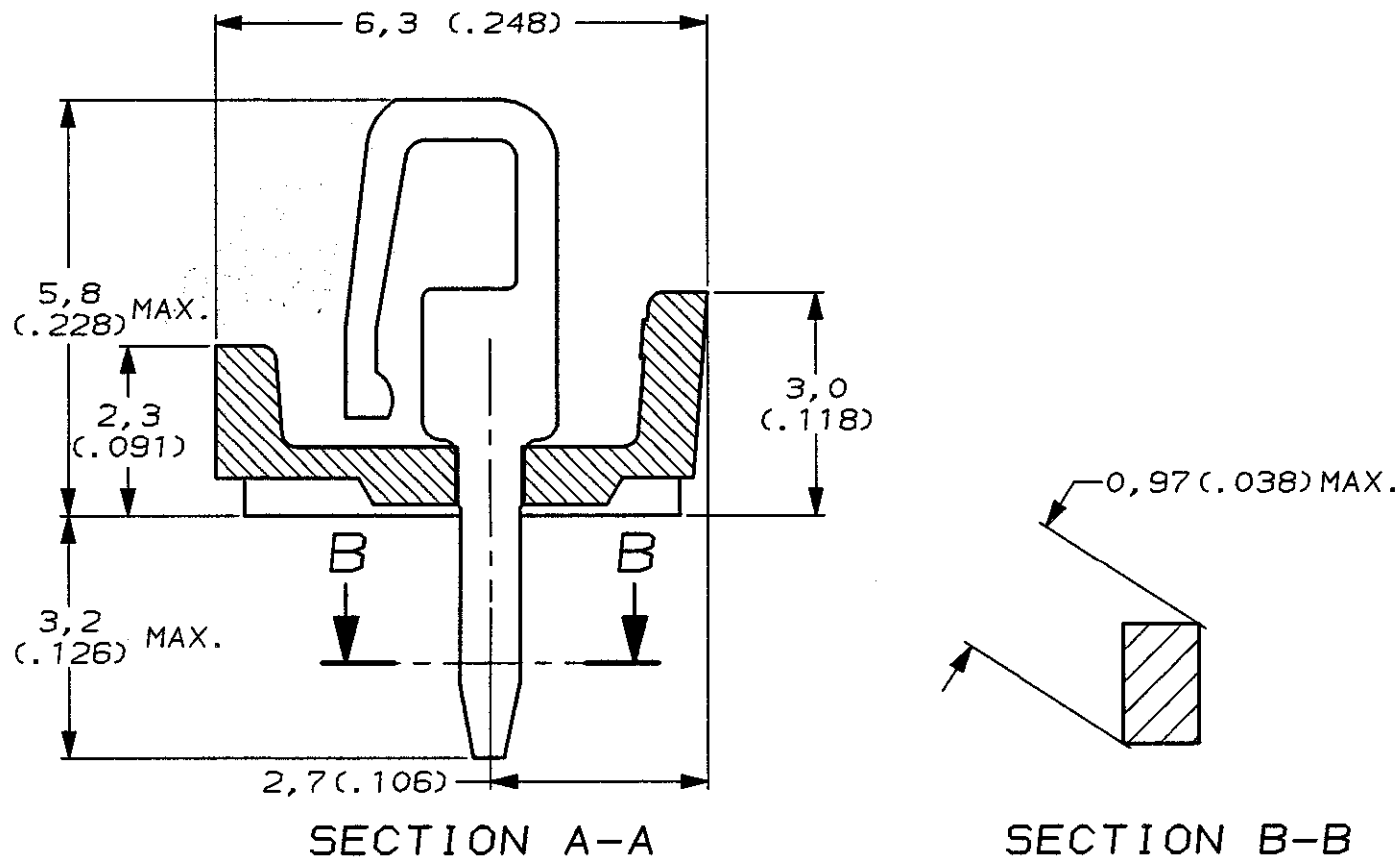
DO NOT SCALE
DIMENSIONS IN mm

METRIC

THIRD ANGLE
PROJECTION



PARTNUMBER	NUMBER OF POS.	"L" MAX.	
		mm	INCH
0-164856-2	2	7,5	.295
0-164856-3	3	12,5	.492
0-164856-4	4	17,5	.689
0-164856-5	5	22,5	.886
0-164856-6	6	27,5	1.083
0-164856-7	7	32,5	1.280
0-164856-8	8	37,5	1.476
0-164856-9	9	42,5	1.673
1-164856-0	10	47,5	1.870
1-164856-1	11	52,5	2.067
1-164856-2	12	57,5	2.264
1-164856-3	13	62,5	2.461
1-164856-4	14	67,5	2.657
1-164856-5	15	72,5	2.854



HOUSING: PBT 20% GLASSFILLED					SEE TABLE				
CONTACT: TIN-LEAD (93/7) OVER NICKEL PLATED BRASS					PARTNUMBER				
MATERIAL					CUSTOMER DRAWING FOR REFERENCE ONLY WILL NOT BE UPDATED				
-					© COPYRIGHT 19- BY AMP HOLLAND B.V. ALL INTERNATIONAL RIGHTS RESERVED. AMP PRODUCTS MAY BE COVERED BY U.S. AND FOREIGN AND/OR PATENTS PENDING.				
-					THIS DRAWING IS UNPUBLISHED RELEASED FOR PUBLICATION ,19				
-					AMP AMP HOLLAND B.V. 's-Hertogenbosch, The Netherlands.				
-					NAME				
J	EH-0777-96				D.K.	HvD	04 JUL 96		
LTR.	REVISION RECORD				DR.	CHK.	DATE		
DR.:	D. KESSLER		CHK.:	H. v. DELFT		APP.:	E. LEIJTENS		DWG. No.
DATE:	04 JUL 96		DATE:	-		DATE:	-		164856
					REV. LTR.	SHEET		A3	
					J	1 OF 1			

- [Home](#)
- [Part Number Search](#)
- [Text Search](#)
- [Alternate Part Search](#)
- [Multiple Part Comparison](#)
- [Alphabetical Search](#)
- [Brand Search](#)
- [Industry Product Search](#)
- [Product Type Search](#)
- [Product Family Search](#)
- [Competitor Cross Reference](#)
- [Document Number Search](#)
- [Lead Free Solutions](#)
- [Help/Glossary](#)

Current Brand View	AMP	View All Tyco Electronics Brands <small>Click to activate links to all other products</small>
---------------------------	---------------------	--

Mini-Match Connectors

[AMP](#) 2.5mm & 5mm Miniature Interconnection System - IDC (Mini-Match)

[AMP](#) **164856-2** -- 2 of 5 products [Active](#) [Active](#)

(Tyco Electronics P/N: 164856-2)

Previous	Next	Sales Information	AMP ACES	Step Search Screen
			Related Documents	General Information
			Pricing	Product Availability

Please use the customer drawing for all design activity.

- **Customer Drawing: 164856, Rev. J**
 Document Title: mini-match male connector assembly, 2-15 pos. 5,0mm pitch
[164978.pdf](#) [164978.pdf](#) (45K)

The photographs and/or line drawings below are representative images of a product for viewing purposes only.

[PCB Layout](#)

Searchable Features:

Brand:	AMP
Product Type:	Header
No. of Positions:	2
Terminate To:	Printed Circuit Board
Centerline (mm [in]):	5.00 [.197]
PCB Mount Angle:	Vertical
Contact Material:	Brass

Other Properties:

Color:	Green
Housing Material:	Thermoplastic Polyester
Material Flammability Rating:	UL 94V-0
Contact Mating Area Plating:	Tin-Lead

[Copyright](#) and [Privacy Statement](#)

Visit [Tyco International, Ltd.](#)

[Products](#) | [Brands](#) | [Industries](#) | [Customer Service](#) | [About](#) | [Home](#)