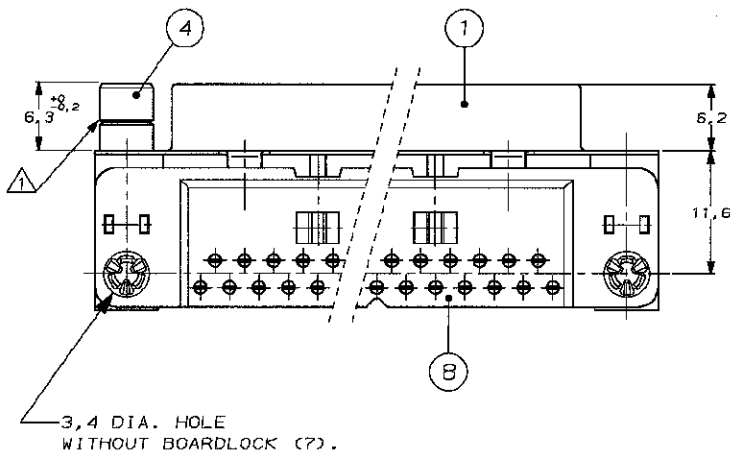
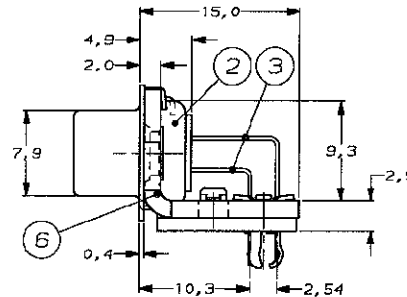
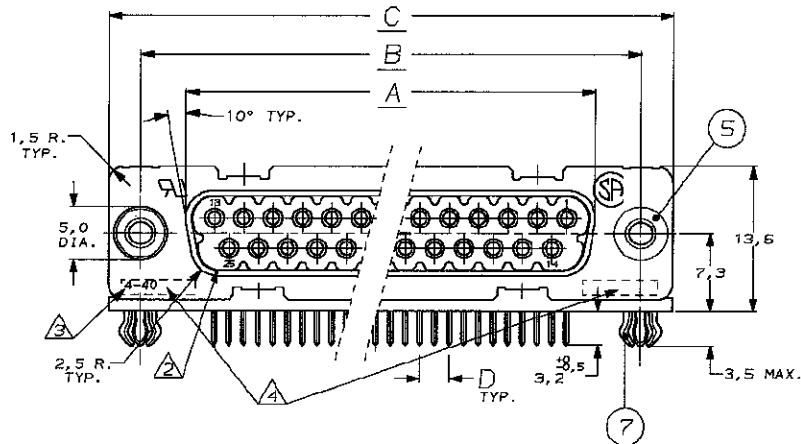


DO NOT SCALE

METRIC

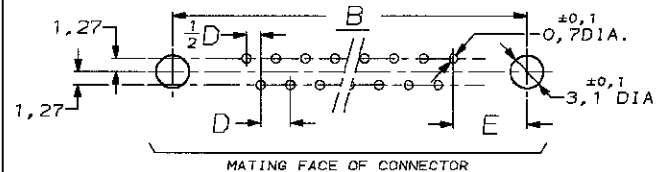
THIRD ANGLE
PROJECTION

DIMENSIONS IN mm



SIZE	NR. OF POS.	A	B	C	D	E
1	9	16,3	25,0	30,9	2,74	7,01
2	15	24,7	33,3	39,2	2,74	7,06
3	25	33,4	47,0	53,1	2,76	6,95
4	37	54,8	63,5	69,4	2,76	6,90

RECOMMENDED P.C. BOARD HOLE-LAYOUT



ACCESSORIES PREFIX	DESCRIPTION OF ACCESSORY	2	2	2	2	2	2	2	2
5	BUSHING WITH THROUGH HOLE 3,1 DIA.								
5	BUSHING WITH INNER THREAD 4-40 UNC								
5	BUSHING WITH INNER THREAD M3								
4	FEMALE SCREWLOCK WITH 4-40 UNC								
4	FEMALE SCREWLOCK WITH M3								
7	BOARDLOCK								

HOW TO ORDER:	DESCRIPTION OF ACCESSORY	0	1	2	3	4	5	6	7	8	9
9 POS. ----->	Z-106505-Y										
15 POS. ----->	Z-106506-Y										
25 POS. ----->	Z-106507-Y										
37 POS. ----->	Z-106508-Y										
PREFIX FOR ACCESSORIES		X	X	X	X	X	X	X	X	X	X
BASIC PARTNR.											
SUFFIX FOR PLATING											

PLATING SUFFIX	DESCRIPTION OF ACCESSORY	-Y = -1	-Y = -2	-Y = -3
	GOLD OVER NICKEL AS PER PERFORMANCE LEVEL 1 (DIN 41852) SOLDERPART : 2,5µm BRIGHT SnPb.			
	GOLD OVER NICKEL AS PER PERFORMANCE LEVEL 2 (DIN 41852) SOLDERPART : 2,5µm BRIGHT SnPb.			
	GOLD OVER NICKEL AS PER PERFORMANCE LEVEL 3 (DIN 41852) SOLDERPART : 2,5µm BRIGHT SnPb.			

NOTES :

△ GROOVE INDICATES VERSION WITH 4-40 UNC INNER THREAD, WITHOUT GROOVE INDICATES VERSION WITH M3 INNER THREAD.

△ CAVITY IDENTIFICATION AT FRONT SIDE ONLY. (25 POS. SHOWN FOR EXAMPLE)

△ INDICATION OF ITEM (4) + (5) : M3 OR 4-40 UNC THREAD.

△ PARTNUMBER AND DATE CODE.

ITEM NRS./MATERIAL :

- ① SHELL : BRIGHT TINPLATED STEEL
- ② HOUSING : GLASSFILLED POLYESTER, COLOR : BLACK
- ③ CONTACTS : PHOSPHORBRONZE (PLATING : SEE TABLE ABOVE)
- ④ FEMALE SCREWLOCK : TINPLATED STEEL (INNER THREAD 4-40 UNC OR M3)
- ⑤ BUSHING : TINPLATED STEEL (INNER THREAD 4-40 UNC OR M3 OR 3,1 DIA THRU-HOLE)
- ⑥ BRACKET : TINPLATED STEEL
- ⑦ BOARDLOCK : TINPLATED PHOSPHORBRONZE
- ⑧ POST ALIGNMENT PLATE : GLASSFILLED POLYESTER, COLOR : BLACK

F	EH-1385-98	V.S.	04-09-98	CUSTOMER DRAWING	FOR REFERENCE ONLY WILL NOT BE UPDATED	
E	EH-1224-96	R.I.V. C.S.	240296	© COPYRIGHT 1988 BY AMP-HOLLAND B.V.	ALL INTERNATIONAL RIGHTS RESERVED. AMP PRODUCTS MAY BE COVERED BY U.S. AND FOREIGN PATENTS PENDING.	
D	EH-1053-96	R.I.V. V.S.	116296	THIS DRAWING IS UNPUBLISHED	RELEASED FOR PUBLICATION	
C	EH-0960-95	R.D. C.V.T.	144006	AMP	AMP-HOLLAND B.V. 'B'-Herengracht, The Netherlands.	
B	EH-0315-95	R.D. C.V.T.	14-03-95	NAME	HD-20 SIZE 1 THRU 4	
A	EH-0728-94	PDJ C.V.T.	16-10-94	RIGHT ANGLE RECEPTACLE HEADER,	MARK 11*	
Q	EH-0503-93	PDJ C.V.T.	27-07-93	DRG. No.	C-106505*106508	
LTR.	REVISION RECORD	DR.	CHK.	DATE	REV. LTR.	SHEET
	P.D. JAEER	CHK. : C.V. TILBURG	APP. : L.V. SOEST	DATE: 20-07-93	DATE: 27-07-93	DATE: 27-07-93