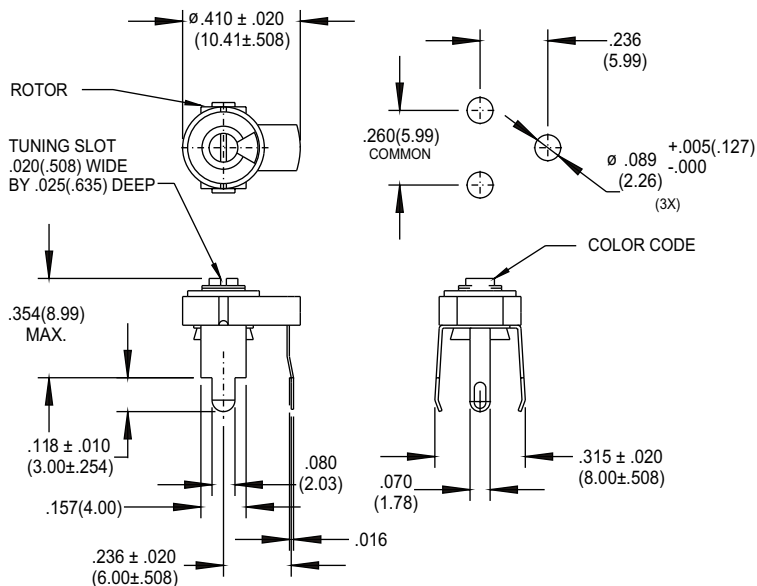


9300 Series Ceramic Trimmer

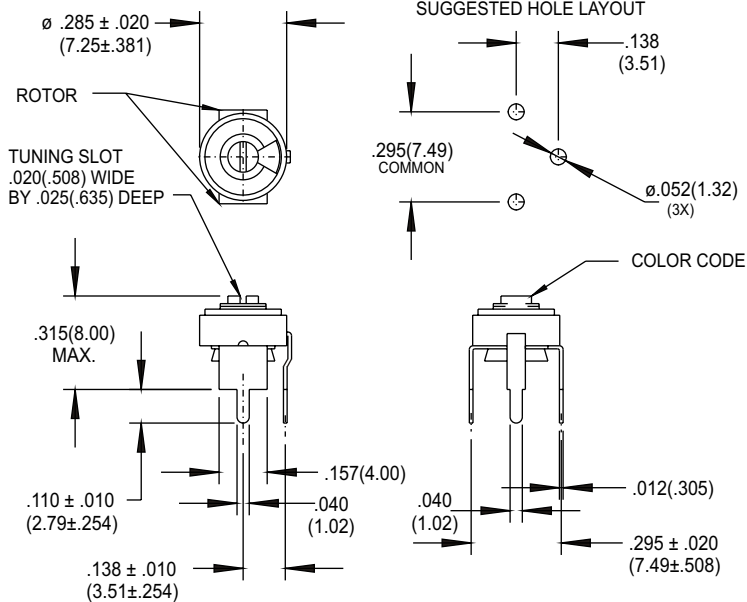
SUGGESTED HOLE LAYOUT



SPECIFICATIONS	
CAPACITY RANGE	SEE TABLE
WORKING VOLTAGE	250 VDC (TEST VOLTAGE 500 VDC)
Q @ 10 MHz	SEE TABLE
INSULATION RESISTANCE	$> 10^4$ MEGOHMS
TEMPERATURE COEFFICIENT	SEE TABLE
TEMPERATURE RANGE	-55°C TO +85°C
TORQUE	0.56 TO 5.6 OZ. IN.
CERAMIC DIELECTRIC STRUCTURE	

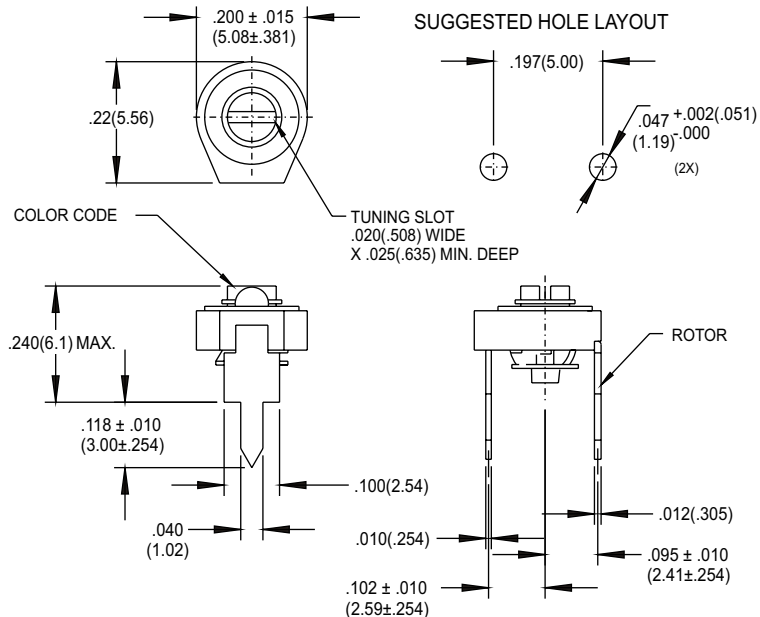
JMC P/N	CAPACITANCE	TEMPERATURE COEFFICIENT (PPM/°C)	COLOR CODE	MIN Q @ 10 MHz
9300	2.0 TO 8.0	NPO ± 200	RED	>300
9301	2.0 TO 12	NPO ± 200	NONE	>300
9302	2.5 TO 23	-450 ± 200	BLUE	>300
9303	4.0 TO 34	-550 ± 800	ORANGE	>300
9304	5.5 TO 45	-1400 ± 800	BROWN	>200
9305	6.0 TO 55	-1400 ± 800	GREEN	>200

SUGGESTED HOLE LAYOUT



JMC P/N	CAPACITANCE	TEMPERATURE COEFFICIENT (PPM/°C)	COLOR CODE	MIN Q @ 10 MHz
9306	2.0 TO 8.0	NPO ± 200	RED	>300
9307	2.0 TO 12	NPO ± 200	NONE	>300
9308	2.5 TO 23	-450 ± 200	BLUE	>300
9309	4.0 TO 34	-550 ± 800	ORANGE	>300
9310	5.5 TO 45	-1400 ± 800	BROWN	>200
9311	6.0 TO 55	-1400 ± 800	GREEN	>200

SUGGESTED HOLE LAYOUT



JMC P/N	CAPACITANCE	TEMPERATURE COEFFICIENT (PPM/°C)	COLOR CODE	MIN Q @ 10 MHz
9371	1.8 TO 5.0	NPO ± 250	BLACK	>300
9372	3.0 TO 10	-600 ± 300	NONE	>300
9373	3.5 TO 18	-800 ± 300	BLUE	>300
9374	5.0 TO 25	-1500 ± 500	PURPLE	>200

Dimensions: inches (mm)
Specifications subject to change without notice